

OVERDRIVE RELEASE NOTES

Welcome to the OverDrive and Caprica Release Notes. Please read this document to find important information on areas of OverDrive and Caprica that may not be covered in the Getting Started Guide or the User Help system.

TABLE OF CONTENTS

LATEST RELEASES	11
Overdrive 21.1 – March 11, 2022	11
Caprica 8.1 with Cockpit 2.0.2 – March 11, 2022	15
Overdrive 20.2.10 – March 7, 2022	16
Caprica 7.2o – March 7, 2022	18
OVERDRIVE VERSION HISTORY	18
Overdrive 21.0.2 – January 13, 2022	18
OverDrive 21.0.1 – October 12, 2021	19
OverDrive 21 – September 30, 2021	20
Overdrive 20.2.9 – February 10, 2022.....	26
Overdrive 20.2.8 – January 07, 2022	26
Overdrive 20.2.7 – October 12, 2021	27
Overdrive 20.2.6 – August 24, 2021	28
Overdrive 20.2.5 – July 14, 2021	29
Overdrive 20.2.4 – May 17, 2021	29
Overdrive 20.2.3 – April 16, 2021	31
Overdrive 20.2.2 – March 26, 2021	31
Overdrive 20.2.1 – March 19, 2021	31
OverDrive 20.2.0 – February 23, 2021	32
OverDrive 20.1.2 – February 16, 2021	33
OverDrive 20.1.1 – January 15, 2021	33
OverDrive 20.1.0 – December 14, 2020.....	34
OverDrive 20.0.1 – November 17, 2020	35
OverDrive 20.0.0 – October 30, 2020.....	35
OverDrive 19.4.1 – September 11, 2020 (LIMITED)	36

OverDrive 19.4 – June 23, 2020 (LIMITED).....	37
OverDrive 19.3.17 – August 6, 2021	38
OverDrive 19.3.16 – May 11, 2021	38
OverDrive 19.3.15 – March 1, 2021	39
OverDrive 19.3.14 – February 8, 2021	39
OverDrive 19.3.13 – December 14, 2020.....	40
OverDrive 19.3.12 – November 20, 2020	40
OverDrive 19.3.11 – October 19, 2020.....	40
OverDrive 19.3.10 – September 09, 2020.....	40
OverDrive 19.3.9 – August 07, 2020.....	41
OverDrive 19.3.8 – July 23, 2020.....	41
OverDrive 19.3.7 – June 29, 2020	41
OverDrive 19.3.6 – June 18, 2020	42
OverDrive 19.3.5 – June 12, 2020	42
OverDrive 19.3.4 – May 29, 2020	43
OverDrive 19.3.3 – May 14, 2020	43
OverDrive 19.3.2 – April 21, 2020.....	43
OverDrive 19.3.1 – April 16, 2020.....	44
OverDrive 19.2.6 – March 20, 2020.....	46
OverDrive 19.2.5 – March 06, 2020.....	46
OverDrive 19.2.4 – February 24, 2020	46
OverDrive 19.2.3 – February 12, 2020	47
OverDrive 19.2.2 – January 08, 2019.....	47
OverDrive 19.2.1 – December 12, 2019.....	47
OverDrive 19.1.3 – November 22, 2019	48
OverDrive 19.1.2 – November 20, 2019	48
OverDrive 19.1.1 – November 1 st , 2019.....	49
OverDrive 18.4.10 – May 29, 2020	50
OverDrive 18.4.9 – February 08, 2020	50
OverDrive 18.4.8 – December 16, 2019.....	50
OverDrive 18.4.7 – November 22, 2019	51
OverDrive 18.4.6 – November 12, 2019	51
OverDrive 18.4.5 – October 03, 2019.....	51

OverDrive 18.4.4 – September 12, 2019.....	52
OverDrive 18.4.3 – August 21, 2019.....	52
OverDrive 18.4.2 – August 02, 2019.....	53
OverDrive 18.4.1 – June 28, 2019	53
OverDrive 18.3.4 – May 27, 2019	54
OverDrive 18.3.3 – May 15, 2019	54
OverDrive 18.3.2 – May 3, 2019.....	55
OverDrive 18.3.1 – April 16, 2019.....	55
OverDrive 18.3 – April 05, 2019.....	56
OverDrive 18.2.5 – March 25, 2019.....	56
OverDrive 18.2.4 – March 21, 2019.....	56
OverDrive 18.2.3 – March 18, 2019.....	57
OverDrive 18.2.2 – February 2019	57
OverDrive 18.2.1 – February 2019	57
OverDrive 18.2 – January 2019.....	57
OverDrive 18.1.4 – January 2019.....	59
OverDrive 18.1.3 – January 2019.....	59
OverDrive 18.1.2 – December 2018.....	60
OverDrive 18.1.1 – November 2018.....	60
OverDrive 18.1 – October 2018.....	61
OverDrive 17.3.16 – November 22, 2019	62
OverDrive 17.3.15 – November 13, 2019	62
OverDrive 17.3.14 – September 19, 2019.....	62
OverDrive 17.3.13 – March 19, 2019.....	62
OverDrive 17.3.12 – March 2019.....	62
OverDrive 17.3.11 – January 2019.....	63
OverDrive 17.3.10 – January 2019.....	63
OverDrive 17.3.9 – December 2018.....	63
OverDrive 17.3.8 – November 2018.....	64
OverDrive 17.3.7 – October 2018.....	64
OverDrive 17.3.6 – September 2018.....	65
OverDrive 17.3.5 – September 2018.....	65
OverDrive 17.3.4 – September 2018.....	65

OverDrive 17.3.3 – August 2018.....	65
OverDrive 17.3.2 – July 2018.....	66
OverDrive 17.3.1 – June 2018	66
OverDrive 17.3 – June 2018	67
OverDrive 17.1 – March 2018.....	68
OverDrive 16.3.5 – March 2018.....	69
OverDrive 16.3.4 – March 2018.....	70
OverDrive 16.3.3 – February 2018	70
OverDrive 16.3.2 – December 2017	70
OverDrive 16.2.16 – March 2018.....	72
OverDrive 16.2.15 – February 2018	72
OverDrive 16.2.14 – February 2018	72
OverDrive 16.2.13 – January 2018.....	72
OverDrive 16.2.12 – December 2017.....	72
OverDrive 16.2.11 – September 2017.....	73
OverDrive 16.2.10 – September 2017.....	74
OverDrive 16.2.9 – August 2017.....	74
OverDrive 16.2.8 – August 2017.....	75
OverDrive 16.2.7 – July 2017.....	75
OverDrive 16.2.6 – June 2017	76
OverDrive 16.2.5 – June 2017	76
OverDrive 16.2.4 – May 2017.....	77
OverDrive 16.2.3 – April 2017.....	77
OverDrive 16.2.2 – March 2017.....	78
OverDrive 16.2.1 – March 2017.....	78
OverDrive 16.2.0 - February 2017.....	78
OverDrive 16.1.6 – May 2017.....	79
OverDrive 16.1.5 – April 2017.....	79
OverDrive 16.1.4 – March 2017.....	79
OverDrive 16.1.3 - December 2016.....	80
OverDrive 16.1.2 - November 2016	80
OverDrive 16.1.1 - November 2016	80
OverDrive 16.1.0 - November 2016	80

OverDrive 16.0.1 - August 2016.....	81
OverDrive 15.8.12 – November 2017	84
OverDrive 15.8.11 – November 2017	84
OverDrive 15.8.10 – October 2017.....	84
OverDrive 15.8.9 – June 2017	85
OverDrive 15.8.8 - April 2017.....	85
OverDrive 15.8.7 - October 2016	85
OverDrive 15.8.6 - October 2016	85
OverDrive 15.8.5 - October 2016	85
OverDrive 15.8.4 - October 2016	86
OverDrive 15.8.3 - August 2016.....	86
OverDrive 15.8.2 - July 2016	86
OverDrive 15.8.1 - June 2016.....	87
OverDrive 15.7.6 - May 2016	87
OverDrive 15.7.4 – April 2016.....	87
OverDrive 15.7.3 – April 2016.....	88
OverDrive 15.7.2 – April 2016.....	88
OverDrive 15.7.0 – March 2016.....	88
OverDrive 15.6.6 – February 2016	89
OverDrive 15.6 – January 2016.....	89
OverDrive 15.5 – August 2015.....	90
OverDrive 15.4.4 – June 2015	92
OverDrive 15.4.3 – June 2015	92
OverDrive 15.4.2 – May 2015.....	92
OverDrive 15.4.1 – March 2015.....	93
OverDrive 15.3.1 – December 2014.....	93
OverDrive 15.3 – October 2014.....	94
OverDrive 15.2.6 – February 2015	94
OverDrive 15.2.5 – November 2014.....	94
OverDrive 15.2.4 – August 2014.....	94
OverDrive 15.2.2 – August 2014.....	94
OverDrive 15.2 – July 2014.....	95
OverDrive 15.1.1 – August 2014.....	95

OverDrive 14.1.6 – June 2014	96
OverDrive 14.1.3 – February 2014	96
OverDrive 14.1.2 – January 2014.....	97
OverDrive 14.1.1 – December 2013.....	97
OverDrive 14.1 – November 2013.....	97
OverDrive 14 to v15.4 – March 2015	98
OverDrive 12.0.9 – January 2014.....	99
OverDrive 12.0.8 – November 2013.....	99
OverDrive 12.0.7 – August 2013.....	100
OverDrive 12.0.6 – July 2013.....	101
OverDrive 12.0.5 – May 2013.....	101
OverDrive 12.0.4 – March 2013.....	102
OverDrive 12.0.3 – March 2013.....	103
OverDrive 12.0.2 – February 2013	103
OverDrive 12.0.1 – November 2012.....	104
OverDrive 12 to v14 – November 2013	105
OverDrive 11.0.2 – July 2012.....	107
OverDrive 11 to v12 – November 2012	108
OverDrive 10.0.7 – October 2012.....	109
OverDrive 10.0.6 – September 2012.....	110
OverDrive 10.0.5 – June 2012	110
OverDrive 10.0.4 – May 2012.....	110
OverDrive 10 to v11 – January 2012	111
OverDrive 9.3 to v10 – September 2011	112
OverDrive 8.1.1 to v9.3.....	113
OverDrive 8.0 to v8.1.1	115
OverDrive 7.0 to v8.0.3.....	116
OverDrive 6.1 to v7.0.....	117
OverDrive 5.01 to v6.1	119
OverDrive 4.01 to v5.01.....	121
OverDrive 3.02 to v4.01.....	123
OverDrive 2.01 to v3.01.....	124
OverDrive 1.03 to v2.0.....	126

CAPRICA VERSION HISTORY	131
Caprica 8.0c with Cockpit 2.0.1– December 20, 2021	131
Caprica 8.0b – December 2, 2021	131
Caprica 8 – September 30, 2021	132
Caprica 7.2n – February 1, 2022.....	133
Caprica 7.2m – December 2, 2021	134
Caprica 7.2l – November 2, 2021	134
Caprica 7.2k – September 08, 2021	134
Caprica 7.2j – September 07, 2021	135
Caprica 7.2i – August 31, 2021.....	135
Caprica 7.2h – July 09, 2021	135
Caprica 7.2g – June 25, 2021	135
Caprica 7.2f with Cockpit 1.3.3 – May 04, 2021.....	135
Caprica 7.2e – March 26, 2021	136
Caprica 7.2d – March 22, 2021	136
Caprica 7.2c – March 18, 2021.....	137
Caprica 7.2b – March 2, 2021	137
Caprica 7.2a – February 23, 2021.....	137
Caprica 7.1c – January 28, 2021.....	137
Caprica 7.1b – January 15, 2021	137
Caprica 7.1a – December 14, 2020	138
Caprica 7.0b – November 17, 2020.....	138
Caprica 7.0a – October 30, 2020	138
Caprica 6.4d – September 15, 2020	139
Caprica 6.4c – September 11, 2020 (Limited).....	139
Caprica 6.4b – August 25, 2020 (Limited)	139
Caprica 6.4a – June 23, 2020 (Limited).....	139
Caprica 6.3g – September 22, 2020	140
Caprica 6.3f – August 23, 2020	140
Caprica 6.3e - July 24, 2020	140
Caprica 6.3d - July 17, 2020.....	140
Caprica 6.3c - June 29, 2020.....	140
Caprica 6.3b – April 21, 2020	141

Caprica 6.3a – April 16, 2020	141
Caprica 6.2b – February 12, 2020.....	143
Caprica 6.2a – December 12, 2019	143
Caprica 6.1a – November 01, 2019	143
Caprica 5.4b – September 06, 2019	144
Caprica 5.4a – June 28, 2019.....	144
Caprica 5.3d – June 07, 2019.....	144
Caprica 5.3c – May 3, 2019.....	145
Caprica 5.3b – April 16, 2019	145
Caprica 5.3a – April 05, 2019	145
Caprica 5.2f – April 01, 2019	146
Caprica 5.2e – March 26, 2019	146
Caprica 5.2c – January 2019.....	146
Caprica 5.2b – January 2019	147
Caprica 5.2a – January 2019	147
Caprica 5.1a – November 2018	148
Cockpit 1.2.0.....	148
Caprica 4.3j – November 2018	148
Caprica 4.3i – October 2018.....	149
Caprica 4.3h – Hot Fix: 27 September 2018	149
Caprica 4.3g – Hot Fix: 6 September 2018	149
Caprica 4.3e – August 2018	149
Caprica 4.3d – Hot Fix: 30 July 2018	149
Caprica 4.3c – Hot Fix: 10 July 2018.....	149
Caprica 4.3b – Hot Fix: 19 June 2018.....	150
Caprica 4.3a – June 2018.....	150
Caprica 4.2c – May 2018.....	151
Caprica 4.2b – May 2018.....	151
Caprica 4.2a – May 2018	151
Caprica 4.1a – February 2018	152
Caprica 3.5p – Hot Fix: 2 April 2018	153
Caprica 3.5o – Hot Fix: 28 March 2018	153
Caprica 3.5n – Hot Fix: 16 March 2018	153

Caprica 3.5m – Hot Fix: 27 February 2018	153
Caprica 3.5l – Hot Fix: 20 February 2018.....	154
Caprica 3.5k – Hot Fix: 6 February 2018.....	154
Caprica 3.5j – February 2018	154
Caprica 3.5i – Hot Fix: 26 January 2018	154
Caprica 3.5h – Hot Fix: 21 December 2017	154
Caprica 3.5g – Hot Fix: 19 December 2017	154
Caprica 3.5f – Hot Fix: 12 December 2017	155
Caprica 3.5e – Hot Fix: 6 December 2017.....	155
Caprica 3.5d – Hot Fix: 29 November 2017	155
Caprica 3.5c – Hot Fix: 6 November 2017	155
Caprica 3.5b – October 2017	156
Caprica 3.5a – September 2017	156
Caprica 3.4a – September 2017	156
Caprica 3.3d – August 2017	157
Caprica 3.3c – July 2017.....	157
Caprica 3.3b – June 2017.....	157
Caprica 3.3 – May 2017	157
Caprica 3.2d – April 2017.....	158
Caprica 3.2 – February 2017.....	158
Caprica 3.1 – November 2016.....	159
Caprica 3.0a – August 2016	159
Caprica 2.1k – August 2016	159
Caprica 2.1c – April 2016.....	160
Caprica 2.1 – March 2016.....	160
Caprica 2.0 – February 2016	160
Caprica 1.4 – January 2016.....	161
Caprica 1.4 – August 2015.....	161
KNOWN ISSUES.....	162
OverDrive	162
OverDrive Client Applications	165
Vision MD/MD-X Switcher Support.....	167
Vision QMD/QMD-X Switcher Support.....	168

Acuity Switcher Support.....	168
Caprica.....	168
GETTING HELP	170
CONTACTING TECHNICAL SUPPORT	170
North America.....	170
EMEA	170
Emergency After-hours Support	170
Online.....	170
COPYRIGHT.....	171

LATEST RELEASES

OVERDRIVE 21.1 – MARCH 11, 2022

WHAT'S NEW

- **Alternate Shots:** Added the ability to assign up to eight alternate shots to a shot. The alternate shots assigned to a shot are accessible in RundownControl while playing out an NRCS rundown. Alternate shots enable you to quickly change the resources used in a shot without having to create a new shot in the NRCS. Available with the Variables license and included with OverDrive Premium. (OD-18078)
- **Source Groups:** Source groups enable you to group sources together to quicken source selection for shots created from a Master template by filtering out irrelevant sources. When you use a Master template that contains a source group to create a shot in RundownControl you can quickly select the source for the shot from the source group. (OD-18057)
- **Short Rows for 0 ME Templates:** The new “Use Short Rows for 0-ME Template” check box in the Layout Options tab of the Options dialog box enables you to control the row height of 0-ME template shot rows in the Rundown table. (OD-18056)
- **Read Only NRCS Plugin:** The OverDrive NRCS plugin can be restricted to read only mode. A new option “Newsroom Plugin Edit Access” can be configured per user in the Manage Users area of the OverDrive Web Administration tool. (OD-18055)
- **Dalet CubeNG:** Added support for Dalet CubeNG graphics engine. (CAP-3014)

BEHAVIOR CHANGES

- When a shot does not have a Floor Director Cue Note enabled, Rundown Control will no longer display a yellow (Disabled) message in the FloorDirector Cue column. (OD-18051)

- Searching for memories in TemplateEditor is no longer case sensitive. (OD-18575)

ENHANCEMENTS

- OverDrive now automatically handles time zone conversion and daylight savings time settings for NRCS running order start times. (OD-18144)
- Nightly OverDrive Server automatic backups are now enabled by default for new installs. For existing installs or upgrades, it is recommended to enable this through the OverDrive Web Administration tool. (OD-18237)
- Added an advanced configuration option to allow Hot Key events to pass through from DirectControl to RundownControl on a different host machine. This option is off by default. (OD-18464)
- Updated NDI Library to NDI 5 from NDI 3.8. (OD-18337)
- Template Editor UI width has been increased to contain all tabs in a single row. (OD-18127)
- OpenJDK version has been updated to OpenJDK 8u312. (OD-18360, OD-18264)
- Improved handling of invalid Hot Key mappings in RundownControl. User can now delete Hot Keys which have become invalid (greyed out in Hot Key dialog). (OD-18547)
- General performance improvements to the OverDrive NRCS plugin. (OD-18327)
- The default Java Max Heap Size for the OverDrive server was increased from 2GB to 3GB for increased performance. (OD-18392)

BUG FIXES

- Fixed an issue where OverDrive clients would not be granted the 7-day temporary license when a connection to the license server was lost. (OD-18109)
- Fixed an issue where Custom Controls would disappear from shots in OverDrive after performing a disk set recall from the Acuity switcher. (OD-17588)

- Fixed an issue with the Open Rundown dialog when the <roListAll> MOS message does not have a value for the <roEdStart> tag. (OD-18040)
- Fixed an issue where latched downstream keys (DSKs) would incorrectly remain latched after performing an audio only transition. (OD-18326)
- Fixed an issue where RundownControl could not play a rundown and would show a pop-up with message "Could not prepare shot because: Problem in OverDrive Server". (OD-18031)
- Fixed an issue where changing NDI stream settings in RundownControl would sometimes cause the NDI preview to stop working. (OD-18569)
- Fixed an issue with OverDrive NRCS plugin where the "Update Story" button would not appear after opening a newly added shot using the Dalet NRCS. (OD-18615)
- Fixed an issue that prevents the MOS Gateway from starting up properly in rare situations where there are duplicate client entries found in the OverDrive database. (OD-18152)
- Fixed an issue where empty folders would disappear from the icon selection dialog when the folder is selected. (OD-18323)
- Fixed an issue in RundownControl where the "Switch User" operation would fail if an unsaved Live Rundown named "New Rundown" is open. (OD-18096)
- Fixed an issue in the OverDrive NRCS Plugin where newly created shots were not appearing automatically when the plugin is in split panel view mode. (OD-18126)
- Fixed an issue where RundownControl would show "Missing Template" for all shots after performing a hot swap to the redundant OverDrive server. (OD-18509)
- Fixed a memory leak where in some cases RundownControl was not cleaning up cached data from previously loaded NRCS running orders. This could prevent the loading of additional running orders. (OD-18489)

- Fixed an issue where OverDrive clients can become unresponsive after connecting to the redundant OverDrive server followed by a shutdown of the primary OverDrive server. (OD-18502, OD-18197)
- Fixed an issue where on rare occasions Rundown Control could not prepare a shot and would display a message "Unable to prepare the selected shot, invalid shots selected". (OD-18391)
- Fixed an issue where the NRCS Configuration for "Matching Strategy" in the Server Configuration page would only use "By ID and name" even when "By Name Only" was selected. (OD-18043)
- Fixed an issue where existing Custom Controls were changing to "Not Defined" in the Custom Control View in Rundown Control. (OD-18035)
- An "Ignore SSL certificate error" option was added for Streamline devices in Template Editor which will ignore SSL certificate errors that may occur when loading Streamline thumbnails. (OD-17188)
- Fixed an issue where previously cached NRCS running orders in OverDrive could not be opened on a second RundownControl client after the running order has been monitored off in the NRCS. (OD-18443)
- Fixed an issue where live rundowns could not be saved when some shot elements violated database integrity constraints. (OD-18353)
- Fixed an issue where NRCS running orders with a special character like '%' in the name could not be loaded in RundownControl. (OD-18503)
- Fixed an issue where updates to Hot Keys and Switcher Events were not always propagated to all open RundownControl clients. (OD-18498)
- Fixed an issue where after adding a shot from the OverDrive plugin into a story in the NRCS, all devices in the shot would be assigned the same clip, usually the clip for the last device in the list. (OD-18370, OD-16546)
- Fixed an issue with the NRCS plugin where some icons would not display for shots or templates. (OD-18342)

- Fixed an issue with the NRCS plugin where multi-selecting and deleting multiple shots would only delete the first selected shot in the list. This is an issue with Firefox only. (OD-18616)
- Fixed an issue where HotKey assignments for QuickAudio Keywords would appear invalid until RundownControl was restarted. (OD-18580)
- Fixed an issue where modifying Story Text sizes in RundownControl would cause formatting issues in the Story Text view. Restarting RundownControl would be required to correct the formatting. (OD-18200)
- Fixed an issue in RundownControl where the Story Text view would not update to the selected shot when selecting shots using a hot key (up/down arrows) instead of the mouse. (OD-18208)
- Fixed an issue in RundownControl where selecting a shot in the Story Text view does not automatically select the associated shot in the running order view. (OD-18209)
- Fixed an issue where right click context menu items in Rundown Control monitor mode clients would become disabled during a take and prep on the control client. (OD-18053)
- Fixed an issue where, on very rare occasions, the OverDrive Server would create a new OverDrive database when it cannot communicate with the existing database. (OD-18221)

CAPRICA 8.1 WITH COCKPIT 2.0.2 – MARCH 11, 2022

WHAT'S NEW

- Added a new feature to allow users to upgrade their Caprica Operating System through Cockpit. (CAP-3194)
- Added support for Dalet CubeNG. (CAP-3188)
- Added support for the TuningS controller for Panasonic Cameras. (CAP-3081)
- Users can trigger scene recalls in Calrec (RAP protocol). (CAP-3137)

- Added support for CG commands in Custom Control to be available in RossTalk. (CAP-1190)

BEHAVIOR CHANGES

- When configuring the ports for the Rave Audio Mixer, the default version is now 3. (CAP-3005)

ENHANCEMENTS

- Added support for Audio Mixers to Mute All and Unmute All. (CAP-3027)

BUG FIXES

- Fixed an issue where executing “Unmute All” from Direct Control was not unmuting the channels on the Lawo Ember+ audio mixer. (CAP-3011)
- Fixed an issue where SideStick Invert Tilt options would not save or recall from disk sets. (CAP-2986)
- Fixed an issue where editing a Custom Control while rundown is playing will cause rundown to stop playing if they were running other Custom Controls at the same time. (CAP-2995)
- Fixed an issue where Caprica would lose connection to a router because of the GVG NP protocol locking up when requesting input names (CAP-3008)
- Fixed an issue where some licensed features would be lost immediately if the license server was unavailable (CAP-3367)
- Fixed an issue where reconnecting to a video server through AMP would cause the first command to fail. (CAP-3149)

OVERDRIVE 20.2.10 – MARCH 7, 2022

BUG FIXES

- Fixed an issue with OverDrive NRCS plugin where the “Update Story” button would not appear after opening a newly added shot using the Dalet NRCS. (OD-18615)

- Searching for memories in TemplateEditor is no longer case sensitive. (OD-18575)
- Fixed an issue where changing NDI stream settings in RundownControl would sometimes cause the NDI preview to stop working. (OD-18569)
- Fixed an issue where Custom Controls would disappear from shots in OverDrive after performing a disk set recall from the Acuity switcher. (OD-17588)

CAPRICA 7.20 – MARCH 7, 2022

ENHANCEMENTS

- Added additional framerate support for Nexio servers. (CAP-3078)

BUG FIXES

- Fixed an issue where Caprica would not be granted the 7-day grace period for some features when the license server is unavailable. (CAP-3367)
- Fixed an issue where the Furio driver would truncate names incorrectly. (CAP-3334).

OVERDRIVE VERSION HISTORY

OVERDRIVE 21.0.2 – JANUARY 13, 2022

BUG FIXES

- Fixed an issue where, in very rare occasions, the OverDrive Server would create a new OverDrive database when it cannot communicate with the existing database. (OD-18221)
- Fixed an issue in the OverDrive NRCS Plugin where newly created shots were not appearing automatically when the plugin is in split panel view mode. (OD-18126)
- Fixed an issue where Custom Controls would disappear from shots in OverDrive after performing a disk set recall from the Acuity switcher. (OD-17588)
- Corrected an issue where clients were getting a licensing error and would not start when the licensing service could not be reached. A 7-day temporary license is now granted in this situation. (OD-18109)
- Fixed an issue where on rare occasions Rundown Control could not prepare a shot and would display a message “Unable to prepare the selected shot, invalid shots selected”. (OD-18391)

- Fixed an issue that prevents the MOS Gateway from starting up properly in rare situations where there are duplicate client entries found in the OverDrive database. (OD-18152)
- Fixed an issue where latched downstream keys (DSKs) would incorrectly remain latched after performing an audio only transition. (OD-18326)
- Fixed an issue where empty folders would disappear from the icon selection dialog when the folder is selected. (OD-18323)

ENHANCEMENTS

- OverDrive now automatically handles time zone conversion and daylight savings time settings for NRCS running order start times. (OD-18144)
- Nightly OverDrive Server automatic backups are now enabled by default for new installs. For existing installs or upgrades, it is recommended to enable this through the OverDrive Web Administration tool. (OD-18237)
- OpenJDK version has been updated to OpenJDK 8u312. (OD-18360, OD-18264)
- The default Java Max Heap Size for the OverDrive server was increased from 2GB to 3GB for increased performance. (OD-18392)

OVERDRIVE 21.0.1 – OCTOBER 12, 2021

BUG FIXES

- Fixed an issue with the Open Rundown dialog when the <roListAll> MOS message does not have a value for the <roEdStart> tag. (OD-18040)
- Fixed an issue where the NRCS Configuration for “Matching Strategy” in the Server Configuration page would only use “By ID and name” even when “By Name Only” was selected. (OD-18043)
- Fixed an issue where existing Custom Controls were changing to “Not Defined” in the Custom Control View in Rundown Control. (OD-18035)
- An “Ignore SSL certificate error” option was added for Streamline devices in Template Editor which will ignore SSL certificate errors that may occur when loading Streamline thumbnails. (OD-17188)

OVERDRIVE 21 – SEPTEMBER 30, 2021

WHAT'S NEW

- Support for MOS 4
- As part of our ongoing efforts to provide secure products, the following changes have been made:
 - Removed all hardcoded passwords for root accounts
 - Added user login prompts for TemplateEditor and DirectControl.
 - Added user login prompt for the NRCS plugin
 - (This is on by default for new installations. It needs to be turned on in an upgrade in order to maintain current functionality until logins are created)
 - Created a Ross Support account for administrative access in the event user created passwords are forgotten or inaccessible during a support call. *(See OverDrive Support Access Waiver for more information)*
- Added option for S3 storage for RapidRestore and Daily Backups
- Added option for a secure websockets connection between OverDrive and Caprica.
- Added a “clear” button to the search in the NRCS plugin
- Added the ability to customize the color of QuickTurn shots in RundownControl.

BEHAVIOR CHANGES

- The default transition is now the first one in selection lists.
- NRCS plugin folders are now collapsed by default

- Folders for shots and master templates are now a different color in the NRCS plugin
- Client and ActiveX Plugin downloads have moved from the landing page to main navigation bar after logging into the web server.
- Added support for changing the name of an active NRCS rundown.

ENHANCEMENTS

- When Caprica is in use, the status indicators for “Switcher”, now switches to “Caprica”.
- When a smaller screen display is used, the “Save” button is now properly displayed.

BUG FIXES

- Fixed an issue where Cue in Advance does not cue properly with multiple clip shots. (OD-14132)
- Fixed an issue where refreshing a page during a services restart alters the “error” or “success” message. (OD-14789)
- Fixed an issue where overridden CG shots are displayed as “N/A” (Dalet Galaxy). (OD-14908)
- Fixed an issue where a CG shot with an Auto Advance does not work. (OD-15360)
- Fixed an issue where a default MOS Video Server template is wrong after removing a device. (OD-16550)
- Fixed an issue where in RundownControl, the primary ENPS server is listed in open rundown while connected to the buddy. (OD-17329)
- Fixed an issue where the default NRCS configuration was not automatically selected. (OD-17500)
- Fixed an issue where Live Preview with NDI crashes RundownControl. (OD-17524)

- Fixed an issue where the Acuity Switcher would disconnect from OverDrive. (OD-17541)
- Fixed an issue where DirectControl does not show the correct clip when cued by a Caprica CustomControl. (OD-17593)
- Fixed an issue where a Java message cause RundownControl to fail. (OD-17612)
- Fixed an issue where when clicking EDIT on a shot in Rundown Control to change the transition, the list is in a random order. (OD-17611)
- Fixed an issue where in RundownControl, the Smart Quick Recall drop down does not update after an NRCS rundown name change. (OD-17614)
- Fixed an issue where in RundownControl, an NRCS rundown name change does not update the rundown list. (OD-17614, OD-17615)
- Fixed an issue where in RundownControl, a CG shot is displayed as "Unknown shot/Missing shot" (Vizrt). (OD-17617)
- Fixed an issue where QuickRecall shot failed to cue. (OD-17619)
- Fixed an issue where in RundownControl, a clip name with 'less than' and 'greater than' characters "<>" is not shown. (OD-17630)
- Fixed an issue where the close rundown server API is ignored for unknown reasons. (OD-17621)
- Fixed an issue where RundownControl shows the wrong cue status for a clip. (OD-17632)
- Fixed an issue where the BACKUP server webpage is missing buttons when using <http://localhost/>. (OD-17636)
- Fixed an issue where, in RundownControl, an auto-run CustomControl configuration is not saved in the live rundown. (OD-17638)
- Fixed an issue where, in RundownControl, the CustomControls are not consistently executed using the clip time elapsed timer. (OD-17639)
- Fixed an issue where RundownControl isn't entering Monitor Mode properly for the second client. (OD-17644)

- Fixed an issue in RundownControl where the clip time remaining device timer for a CustomControl was triggered too early. (OD-17650)
- Fixed an issue where floated in stories are put at the end of the running order following an NRCS (iNEWS) gateway error. (OD-17654)
- Fixed an issue where the NRCS (iNEWS) showed a persistent stale connection status. (OD-17656)
- Fixed an issue where there was an extra interior border on the QuickTurn drop-down menu. (OD-17659)
- Fixed an issue where in TemplateEditor, a template number can not be modified to have more than four digits. (OD-17660)
- Fixed an issue where there was an unlabeled colour in RundownControl options. (OD-17664)
- Fixed an issue where in RundownControl, where a shot with a MOS server clip which is not CG, should not enable a secondary event checkbox. (OD-17665)
- Fixed an issue where Audio Variables are not sorted alphabetically. (OD-17666)
- Fixed an issue where when creating a subfolder in TemplateEditor, the folder is not visible by default. (OD-17677)
- Fixed an issue where QuickRecalls can not be removed from a default live rundown. (OD-17683)
- Fixed an issue where secondary event CG shot information is set to null, when it is converted into a primary shot. (OD-17686)
- Fixed an issue where, when creating a new folder or sub-folder in the Shots section, the corresponding folder or sub-folder in the Templates section becomes selected automatically. (OD-17689)
- Fixed an issue where JMS messaging prevents some keywords from being executed. (OD-17504)

- Fixed an issue where the “No Free Devices” warning was missing till the item was selected to program. (OD-17964)
- Fixed an issue where Tria AMP servers were cued but failed to play in multiclip shots. (OD-17690)
- Fixed an issue where Take and Prepare failed while waiting for a transition to complete. (OD-17956)
- Fixed an issue where the monitor client wasn’t showing updates displayed in the control client. (OD-17955)
- Fixed an issue when the plugin was opened on a smaller screen the scroll bar would disappear. (OD-17953)
- Fixed an issue where an error would display when the plugin opened in iNews. (OD-17949)
- Fixed an issue in where shots would remain in “Shot Cuing” indefinitely in RundownControl. (OD-17932)
- Fixed an issue where camera cued status would not transfer to a program keyer. (OD-17931)
- Fixed an issue where the XPression thumbnail server was displaying disconnected from the redundant. (OD-17854)
- Fixed an issue where the plugin selection wasn’t cleaned up after selection. (OD-17842)
- Fixed an issue where fixed ME transitions were available outside of fixed MEs in the plugin. (OD-17833)
- Fixed an issue where RapidRestore would report a successful backup if no path was assigned. (OD-17820)
- Fixed an issue in the plugin where a shot would fail to save if additional audio was selected without an audio source assigned. (OD-17815)
- Fixed an issue where “invalid build number 2” error message was displayed when connecting to Caprica. (OD-17561)

- Fixed an issue where the OverDrive client is asked to go into Monitor Mode after an ungraceful close of a client that was playing a rundown. (OD-17605)
- Fixed an issue where a QuickRecall does not appear when dragging and dropping to a live rundown. (OD-17657)
- Fixed an issue where the Audio Variable source name is missing from the Audio Variables default source column. (OD-17658)
- Fixed an issue in RundownControl where the System status for Caprica and CustomControl displays the server IP for OverDrive and not Caprica. (OD-17726)
- Fixed an issue where network settings change, the client should restart RundownControl, TemplateEditor and DirectControl. (OD-17912)
- Fixed an issue where MOS in/out logs still display ENPS Primary NCS ID when connecting to ENPS Buddy (OD-17935)
- Fixed an issue where clips were cued, but not played on TRIA/AMP in some multiclip shots. (OD-17958)

OVERDRIVE 20.2.9 – FEBRUARY 10, 2022

BUG FIXES

- Fixed an issue where OverDrive clients can become unresponsive after connecting to the redundant OverDrive server followed by a shutdown of the primary OverDrive server. (OD-18502, OD-18197)
- Fixed an issue where RundownControl would show “Missing Template” for all shots after performing a hot swap to the redundant OverDrive server. (OD-18509)
- Fixed a memory leak where in some cases RundownControl was not cleaning up cached data from previously loaded NRCS running orders. This could prevent the loading of additional running orders. (OD-18489)
- Fixed an issue where after adding a shot from the OverDrive plugin into a story in the NRCS, all devices in the shot would be assigned the same clip, usually the clip for the last device in the list. (OD-18370, OD-16546)
- Fixed an issue where previously cached NRCS running orders in OverDrive could not be opened on a second RundownControl client after the running order has been monitored off in the NRCS. (OD-18443)
- Fixed an issue where live rundowns could not be saved when some shot elements violated database integrity constraints. (OD-18353)
- Fixed an issue where NRCS running orders with a special character like ‘%’ in the name could not be loaded in RundownControl. (OD-18503)
- Fixed an issue in RundownControl where an “Invalid Shot” message would appear when preparing shots while multiple running orders were open at the same time. (OD-18391)
- Fixed an issue where updates to Hot Keys and Switcher Events were not always propagated to all open RundownControl clients. (OD-18498)

OVERDRIVE 20.2.8 – JANUARY 07, 2022

BUG FIXES

- Fixed an issue where, in very rare occasions, the OverDrive Server would create a new OverDrive database when it cannot communicate with the existing database. (OD-18221)
- Fixed an issue where latched downstream keys (DSKs) would incorrectly remain latched after performing an audio only transition. (OD-18326)
- Corrected an issue where clients were getting a licensing error and would not start when the licensing service could not be reached. A 7-day temporary license is now granted in this situation. (OD-18109)
- Fixed an issue in the OverDrive NRCS Plugin where newly created shots were not appearing automatically when the plugin is in split panel view mode. (OD-18126)
- Fixed an issue that prevents the MOS Gateway from starting up properly in rare situations where there are duplicate client entries found in the OverDrive database. (OD-18152)
- Fixed an issue where empty folders would disappear from the icon selection dialog when the folder is selected. (OD-18323)

ENHANCEMENTS

- OverDrive now automatically handles time zone conversion and daylight savings time settings for NRCS running order start times. (OD-18144)
- Nightly OverDrive Server automatic backups are now enabled by default for new installs. For existing installs or upgrades, it is recommended to enable this through the OverDrive Web Administration tool. (OD-18237)
- OpenJDK version has been updated to OpenJDK 8u312. (OD-18360, OD-18264)
- The default Java Max Heap Size for the OverDrive server was increased from 2GB to 3GB for increased performance. (OD-18392)

OVERDRIVE 20.2.7 – OCTOBER 12, 2021

BUG FIXES

- Fixed an issue with the Open Rundown dialog when the <roListAll> MOS message does not have a value for the <roEdStart> tag. (OD-18040)
- Fixed an issue where the NRCS Configuration for “Matching Strategy” in the Server Configuration page would only use “By ID and name” even when “By Name Only” was selected. (OD-18043)
- Fixed an issue where existing Custom Controls were changing to “Not Defined” in the Custom Control View in Rundown Control. (OD-18035)
- An “Ignore SSL certificate error” option was added for Streamline devices in Template Editor which will ignore SSL certificate errors that may occur when loading Streamline thumbnails. (OD-17188)
- Fixed an issue where secondary event CG shot information is set to null, when it is converted into a primary shot. (OD-17686)

OVERDRIVE 20.2.6 – AUGUST 24, 2021

WHAT'S NEW

- Added “VideoID” as a video server device type under the OVD-MOS-STD licenses. (Previously only available with a 3rd party license) Allows for data from a NRCS Column to populate clip IDs in templates when a MAM isn’t present. (OD-17920)
- Improved how the system handles cancelling the load of a rundown order (OD-17886, OD-17900, OD-17888, OD-17864, OD-17926, OD-17916)
- Added the ability to flush the queue of loading rundown orders (OD-17861, OD-17892, OD-17910)
- Improved the accuracy of the progress bar while loading a rundown order (OD-17916, OD-17863)

BUG FIXES

- Fixed an issue where the re-cue status of a clip stays in the failed state when it is not. (OD-17440)

- Fixed an issue where when Caprica is connected to a Carbonite Ultrix switcher, the OverDrive server switcher status shows RED with "Invalid Switcher". (OD-17671)
- Fixed an issue where, in a primary/redundant OD setup, a network disconnect on the redundant server led to a delay in the Rundown client response (OD-17847)

OVERDRIVE 20.2.5 – JULY 14, 2021

ENHANCEMENTS

- Added the ability to cancel a loading NRCS running order from the "Open NRCS Rundown" progress dialog. The dialog has also been enhanced to show the list of running orders that are queued to load. (OD-17787)

BUG FIXES

- 20
- Fixed an issue where RundownControl could lose the On-Air and Prepared Shots when the NRCS sends an update at the same time RundownControl is preparing a shot. (OD-17730)
- Fixed an issue where changing a QuickCode from the NRCS on a prepared shot would result in a "lost prepared shot" dialog box. The shot will now be re-prepared automatically if necessary, and no dialog box will appear. (OD-17837)
- Added an advanced configuration setting to inject a delay before preparing shots during a "Take and Prep" in RundownControl. This fixes an issue where OverDrive prepares the next shot too quickly which can cause the on-air shot to have incorrect data (for example, audio faders not coming up). (OD-17753, OD-9711)

OVERDRIVE 20.2.4 – MAY 17, 2021

BUG FIXES

- Added an advanced configuration setting to poll server clip positions exclusively from the video server device. This fixes an issue where clip position timers would “bounce” as clip position updates were received from the video server that were sometimes not synchronized with the RundownControl clip timer. (OD-17563)
- Fixed an issue where icons would not load in the icon selection dialog of RundownControl and TemplateEditor when there are large numbers of icons (thousands). (OD-17604)
- Fixed an issue where RundownControl was not automatically reconnecting to the XPression gateway after being disconnected. (OD-17610)
- Fixed an issue where shots with a custom audio fade rate of 0 would not bring the audio fader up and would default the fade rate to the transition duration. An option was added to the OverDrive Advanced Configuration “Treat Caprica Audio Fade Rate 0 as 1” to work around this issue. (OD-17645)
- Fixed an issue where a shot with invalid additional audio settings would cause latency during transitions as well as issues with cue in advance for some devices. (OD-17646)
- Corrected an issue where in certain situations the wrong video clips were loaded with Smart Quick Recalls that were dragged into the running order. (OD-17648)
- Improved the performance of loading running orders in OverDrive systems with thousands of master templates. (OD-17603)
- Fixed a RundownControl issue where appending a rundown would only work when the rundown being appended was already open. (OD-17625)
- Fixed an issue with the RundownControl “Shot Information” column where the clip info was incorrectly showing “none” for non-MOS CG shots. (OD-17642)
- Fixed an issue with RundownControl where CG shots that are prepared without clip info, cannot be edited. (OD-17643)

OVERDRIVE 20.2.3 – APRIL 16, 2021

BUG FIXES

- Fixed an issue where “Audio Fade Rate” changes made to OverDrive shots in the plugin were not being reflected in those same shots when viewed in RundownControl. (OD-17587)
- Fixed an issue where OverDrive replication to the redundant server would become “stalled”. (OD-17520)
- Fixed an issue where disabling the “Compress MOS CG String” option was not working. (OD-17542)
- Fixed an issue where RundownControl would report secondary XPression CG shots as “Manual” after converting them to timed CG shots. (OD-17545)
- Corrected an issue where some Direct Control Audio fader labels would default to their channel names instead of their assigned Alias names. (OD-17562)

OVERDRIVE 20.2.2 – MARCH 26, 2021

BUG FIXES

- Fixed an issue where in some cases secondary shots are not prepared after the primary is taken to air. (OD-17517)

ENHANCEMENTS

- Improved the performance of loading and playing very large running orders.

KNOWN ISSUES

- When changing a secondary CG shot from manual to timed or timed to manual in the NRCS, RundownControl will not automatically pick up this change. The update to the CG shot will be picked up when the associated story is modified or floated and un-floated.

OVERDRIVE 20.2.1 – MARCH 19, 2021

BUG FIXES

- Fixed an issue where QuickCodes were not showing up in shots in a specific NRCS configuration. (OD-17525)
- Improved performance of Rundown Control when playing and loading very large running orders (1000+ shots). (OD-17521)
- Fixed an error saving a live rundown when one or more shot descriptions was longer than expected. (OD-17508)
- Fixed an issue where cutting and pasting a shot within a live rundown loses the coded transition and custom controls. (OD-17515)
- Fixed an issue where some shot information (transition timeout, transition type) was not correct when saving a Live Rundown. (OD-17505)
- Fixed an issue where video server clips coded in an Mos-ID column were not merged with their associated OverDrive template in RundownControl if there was an additional shot (ex. Camera shot) coded above the OverDrive object. (OD-17488)
- Fixed an issue where Custom Controls were marked as invalid/missing when editing shots in RundownControl. This would happen after loading a disk set on the switcher. (OD-17487)
- Fixed an issue where RundownControl would timeout loading a rundown when receiving very large MOS messages from the NRCS. (OD-17490)

OVERDRIVE 20.2.0 – FEBRUARY 23, 2021

WHAT'S NEW

- Added audio to NDI Live Preview in Rundown Control.
- Added support for additional Viz MOS graphic timing fields.

ENHANCEMENTS

- Improved the accessibility of the OverDrive NRCS Plugin. The plugin can be fully utilized using keyboard navigation only.

- An optional “Copy MOS” button has been added to the edit shot dialog in the NRCS Plugin to help facilitate adding shots to a story in NRCS systems that do not support the “Add to Story” button.

BUG FIXES

- Fixed an issue where a NRCS rundown could be replaced with a different rundown when multiple rundowns were open at the same time and being updated in the NRCS.
- Fixed an issue where “moveMultiple” operations in iNews resulted in stories showing up in incorrect positions within RundownControl.
- Fixed an issue where new master templates were not being replicated to the redundant overdrive server.

KNOWN ISSUES

- There is an issue where some shots may show a camera device as “Disabled” in Rundown Control. This can be fixed by disabling and enabling that device in Rundown Control’s Device Swap menu. To avoid this situation, it is recommended to disable devices in Caprica, or on your Ross Video Acuity using Custom Controls.

OVERDRIVE 20.1.2 – FEBRUARY 16, 2021**BUG FIXES**

- Fixed an issue with the OverDrive NRCS plugin which caused a JavaScript pop-up when double clicking entries in selection dialogs.
- Corrected an issue where master templates in Template Editor could not be selected and/or edited.

OVERDRIVE 20.1.1 – JANUARY 15, 2021**BUG FIXES**

- Fixed an issue with QuickCode templates showing "Unused" in RundownControl when there are multiple devices configured with the same

MOS ID, and the user codes a QuickCode that does not use the first device in the list.

- Fixed an issue where audio variable Quick Picks and Quick Recalls stopped working when the primary and redundant OverDrive systems temporarily lost communication.
- Fixed an issue where audio channels were duplicated in OverDrive.

OVERDRIVE 20.1.0 – DECEMBER 14, 2020

WHAT'S NEW

- As part of the OverDrive QuickTurn workflow, added support for embedding SCTE-104 baseband markers into a video stream using a Ross Video TES-8643 VANC Processor card.
- When QuickTurn is disabled or enabled globally, the “QuickTurn Global” status is displayed in the RundownControl System Status View.
- QuickTurn device and channel status is now displayed in the RundownControl System Status View.
- On-Air mode and QuickTurn Device status have been added to FloorDirector.
- Running orders that have been unmonitored by the NRCS but are still open in RundownControl and cached will be flagged in the System Status View and the Open Rundown dialog in RundownControl.

ENHANCEMENTS

- QuickTurn channel names are now pre-populated when setting up QuickTurn devices in TemplateEditor.
- When opening an NRCS Running Order, the progress bar now shows the total number of stories in the running order, as well as the number of stories received.

BUG FIXES

- Fixed an issue where RundownControl would report a Stale Gateway Connection status when the server time or client were not configured with NTP timing.

- Fixed an issue where RundownControl timers were not displaying properly when connected to an Acuity switcher in UHD mode.
- Fixed an issue with the NRCS plugin where deselecting the “secondary event” checkbox for a CG template would not save with the story.

OVERDRIVE 20.0.1 – NOVEMBER 17, 2020

ENHANCEMENTS

- Updated Splash Screens.
- Updated OverDrive QuickTurn Documentation.
- When reloading a NRCS running order in RundownControl, the default option is now “Reload from NRCS without saving changes”, instead of “Refresh”.

OVERDRIVE 20.0.0 – OCTOBER 30, 2020

WHAT'S NEW

- OverDrive's QuickTurn allows you to repurpose content for multiple platforms. New in version 20, you can and easily record any segment for future use. You can use QuickTurn to turnaround a pre-produced segment for use in your current production. Pre-record your headline sequence, an interview with a celebrity or political figure on a tight schedule and have OverDrive and Streamline (or other 3rd party MAMs) work together to fulfill a media placeholder to be reused without editing or manual intervention.
- All MOS processing of NRCS rundowns is now done on the OverDrive server rather than the Rundown Control client.
- Running orders are cached on the server providing extremely fast loading of Rundowns on additional OverDrive clients.
- The default Live “New Rundown” is now unique to each RundownControl client. Any updates to “New Rundown” on one client will not appear on any other client that also has the default “New Rundown” open.
- When a rundown is re-opened, the user will be able to Refresh the running order without a resync from the NRCS, Reload from NRCS without saving

changes, or Reload from the NRCS and save the current changes as a live rundown.

- Error and warning pop-up dialogs now have a yellow border and bold text to make them more obvious.

BEHAVIOR CHANGES

- NRCS Timer Updates
 - Story timer values from the NRCS are now updated when the story is re-prepared, eliminating the need to stop and start the playing rundown to pick up these timer changes.
 - NRCS Rundown Start Time Remaining and NRCS Rundown Duration Remaining timers are now updated dynamically.
 - In RundownControl, users will be notified with a popup when they edit a shot that is already being edited on another client.
- When a rundown is currently being opened and you load another rundown, then we display a popup indicating that to wait for the first rundown to be fully loaded.
- Multiple RundownControl Clients can now load different NRCS rundowns simultaneously.

BUGS ADDRESSED

- Fixed an issue where the OverDrive ActiveX Plugin would display a JavaScript error when entering a new OverDrive server connection.

KNOWN ISSUES

- Progress bar does not show number of stories received while loading NRCS running orders.
- A video driver fault may cause rundown control to crash if your client machine goes to sleep. Ensure power and sleep settings are adjusted accordingly to prevent this issue.

OVERDRIVE 19.4.1 – SEPTEMBER 11, 2020 (LIMITED)

WHAT'S NEW

- Added support for video servers that support the IN/OUT/LOOP MOS workflow such as Nexio.
- When multiple variables are assigned to the same channel, the full list of variables will be displayed in the channel name pop-up for each fader in Direct Control.

BUGS ADDRESSED

- Fixed an issue where the OverDrive Server would continuously try to connect to a switcher after installation and no switcher has been configured.
- Fixed an issue where database replication would fail to start on the redundant overdrive server.
- Fixed an issue with the Rundown Control table when dark grey is chosen as the color for the video server progress bar.
- Added a warning message when the Live Preview fails to initialize properly in Rundown Control.
- Fixed an issue where the OverDrive logs were spammed with "JMS switcher source message received" when Caprica was restarted.

OVERDRIVE 19.4 – JUNE 23, 2020 (LIMITED)**WHAT'S NEW**

- Ability to define QuickCode Template keywords.
- Ability to enable Redundant NCS ID for Inception Gateway Configuration.
- Improved look and function of QuickAudio and QuickCode in RundownControl.
- Added the ability to pre-set the options for AutoAdvance in templates and shots.
- Added advanced option for Variable Audio behavior with CGs

BUGS ADDRESSED

- Fixed an issue where on-air line shifts in the rundown view when updating stories in iNews.
- Fixed an issue where when using Virtual Keyers in Caprica, OverDrive is intermittently unable to control the DSKs.
- Fixed an issue where resizing OverDrive is choppy when there are over 100 variables.
- Fixed an issue where editing a prepared shot causes a disruptive pop-up.
- Fixed an issue where Audio Variable quick picks and audio quick picks do not work when on a video only template.

OVERDRIVE 19.3.17 – AUGUST 6, 2021

BUGS ADDRESSED

- Added an advanced configuration setting to inject a delay before preparing shots during a “Take and Prep” in RundownControl. This fixes an issue where OverDrive prepares the next shot too quickly which can cause the on-air shot to have incorrect data (for example, audio faders not coming up). (OD-17753, OD-9711)
- Fixed an issue where RundownControl did not handle stories with objects (or items) that have a duplicate itemID. This would result in missing story elements in the rundown. (OD-17673)

OVERDRIVE 19.3.16 – MAY 11, 2021

BUGS ADDRESSED

- Added an advanced configuration setting to poll server clip positions exclusively from the video server device. This fixes an issue where clip position timers would “bounce” as clip position updates were received from the video server that were sometimes not synchronized with the RundownControl clip timer. (OD-17563)

- Fixed an issue where OverDrive replication to the redundant server would become “stalled”. (OD-17520)
- Fixed an issue where “Audio Fade Rate” changes made to OverDrive shots in the plugin were not being reflected in those same shots when viewed in RundownControl. (OD-17587)
- Fixed an issue where icons would not load in the icon selection dialog of RundownControl and TemplateEditor when there are large numbers of icons (thousands). (OD-17604)
- Improved the performance of loading running orders in OverDrive systems with thousands of master templates. (OD-17603)

OVERDRIVE 19.3.15 – MARCH 1, 2021

BUGS ADDRESSED

- Fixed an issue where new master templates were not being replicated to the redundant overdrive server.
- Fixed an issue where “moveMultiple” operations in iNews resulted in stories showing up in incorrect positions within RundownControl.
- Corrected an issue when changing the “Use CC From” option from “Shot” back to “Template” set the custom control value to “No Custom Control”, instead of the custom control defined in the template.

OVERDRIVE 19.3.14 – FEBRUARY 8, 2021

BUGS ADDRESSED

- Fixed an issue where multiple RundownControl clients in some scenarios could play the same NRCS Rundown simultaneously when entering monitor mode.
- Audio settings for Quick Recalls are now copied when copying a user account.
- Corrected an issue where master templates in Template Editor could not be selected and/or edited.

OVERDRIVE 19.3.13 – DECEMBER 14, 2020

BUGS ADDRESSED

- Fixed an issue where changes to the “Secondary event” checkbox for CG templates were not being saved in the OverDrive Plugin.

OVERDRIVE 19.3.12 – NOVEMBER 20, 2020

BUGS ADDRESSED

- Fixed a database data corruption issue caused by the replication process. This issue would affect any data containing left “(” or right “)” brackets, in particular the Hot Key binding and switcher event/command bindings.
- Fixed an issue where RundownControl would hang when opening and closing running orders in quick succession.
- Fixed an issue where the OverDrive ActiveX Plugin would display a JavaScript error when entering a new OverDrive server connection

OVERDRIVE 19.3.11 – OCTOBER 19, 2020

BUGS ADDRESSED

- Fixed an issue where a secondary timed CG with 00:00:00.00 duration was not treated as a manual CG.
- Fixed an issue where changing the “air date” field from the iNews timing bar would cause OverDrive to lose the on-air and prepared shots.

OVERDRIVE 19.3.10 – SEPTEMBER 09, 2020

BUGS ADDRESSED

- Fixed an issue where an XPression element did not play in certain cases.
- Fixed an issue where an OverDrive would not trigger multiple routes on an GV NV-9000 router in a single template.
- Fixed an issue where in some cases two RundownControl clients would play two different NRCS rundowns at the same time.

- Fixed an issue where the switcher LED indicates persistent failure after first launch.
- Fixed an issue where audio memories and quick picks are missing on restore.
- Fixed an issue where in the newsroom plugin, were incorrectly indicating they are being edited.
- Fixed an issue where when parsing stories with ControlAir clips, only the clip for the first ControlAir device is pulled in.

OVERDRIVE 19.3.9 – AUGUST 07, 2020

BUGS ADDRESSED

- Fixed an issue where key latching states were reset when preparing a shot. (Bug introduced in 19.3.7)

OVERDRIVE 19.3.8 – JULY 23, 2020

BUGS ADDRESSED

- Fixed an issue where changing the colour of the video server progress bar to dark gray caused a display issue in RundownControl.
- Fixed an issue where when NRCS ID was in lowercase it generated parsing errors in the database.

OVERDRIVE 19.3.7 – JUNE 29, 2020

BUGS ADDRESSED

- Fixed an issue where when using Virtual Keyers in Caprica, OverDrive is intermittently unable to control the DSKs. (Bug introduced in 19.3.1)
- Fixed an issue where the on-air line shifts in the rundown view when updating stories in iNews.
- Fixed an issue where adding QuickRecall shots did not maintain Cue-In-Advance prediction. (Bug introduced in 19.3.4)

- Fixed an issue where the Global Auto Advance toggle button remained green when toggled off.
- Fixed an issue where modifying a graphic while it is sequenced becomes un-sequenced. (Bug introduced in 19.3.1)

OVERDRIVE 19.3.6 – JUNE 18, 2020

BUGS ADDRESSED

- Fixed an issue where cued clips are being recued when a shot is prepared.
- Fixed an issue where adding an additional device to a 0 ME Template enables the transition types.
- Fixed an issue where enabling/disabling audio board in playout configuration may cause DirectControl to be out of sync (i.e. disabled when should be enabled)

OVERDRIVE 19.3.5 – JUNE 12, 2020

BUGS ADDRESSED

- Fixed an issue where RundownControl does not update the thumbnail when a change is made to an XPression CG.
- Fixed an issue where RundownControl generates an invalid licensing warning.
- Fixed an issue where assigning a memory in a template on EDIT does not update the Master Template List View.
- Fixed an issue where Postgres fails to acquire a connection once the limit of 100 is reached.
- Fixed an issue where saving a live rundown after editing a shot purges all the shots in the that rundown.
- Fixed an issue where a default “New Rundown” could not be saved if selecting “close” before saving.

OVERDRIVE 19.3.4 – MAY 29, 2020

BUGS ADDRESSED

- Fixed an issue where a MOS Gateway installed on a client could not connect to the server.
- Fixed an issue where the NRCS rundown loading bar wouldn't disappear in certain situations.
- Fixed an issue where shots would disappear from folders inside the NRCS plugin after a modification until a restart of the webserver.

OVERDRIVE 19.3.3 – MAY 14, 2020

ENHANCEMENTS

- NRCS Rundown loading progress bar now remains visible when all stories for the Rundown are received. Clicking on the 'hide' button will hide the progress bar only

BUGS ADDRESSED

- Fixed an issue where when editing a shot, the drag and drop function did not work in the NRCS Plugin
- Improved the NRCS Rundown Loading progress window
- Added an option to suppress pop-ups when updating non-secondary MOS CG shots.
- Fixed an issue where an XPression CG becomes "manual" when the out is "NONE"
- Fixed an issue with the Audio Custom Rate text field in the NRCS plugin.
- Fixed an issue with router lists in RundownControl and NRCS plugin.

OVERDRIVE 19.3.2 – APRIL 21, 2020

BUGS ADDRESSED

- Fixed an issue in DirectControl where when using the 'unlock all' CustomControl, and when re-connecting to Caprica, all audio faders were made visible.

OVERDRIVE 19.3.1 – APRIL 16, 2020

WHAT'S NEW

- New ability to selectively restore parts of a backup using RapidRestore.
- Introduced a new view, 'Live Preview' in RundownControl to view streams using NDI.
- Improved graphics interface to allow for timing updates to be made while graphics are sequenced or online.
- New ability to restart all services (including web server) in one click from the OverDrive Web Administration page.
- Shots in the Newsroom Plugin now indicate that they are 'dirty' when being edited.
- RundownControl now receives notifications from Caprica as Toast Messages.
- Introduced support for locked faders.
- Support for virtual inputs from Caprica.

BUGS ADDRESSED

- Fixed an issue where QuickPick variable buttons disappear when using Variables as additional audio.
- Fixed an issue where Variable name display is lost when doing video only transitions.
- Fixed an issue where faders in DirectControl are slow to respond to QuickPick button presses when system has more than 500 Variables.
- Fixed an issue where "Create switcher event" dialog is slow to respond with hundreds of QuickAudio keywords.
- Fixed an issue where TemplateEditor QuickAudio keyword slow to load with hundreds of QuickAudio keywords.

- Fixed an issue where moving faders in DirectControl is very slow when the system has hundreds of variables.
- Fixed an issue where when using Acuity, all 64 aux busses were not visible.
- Fixed an issue where editing a prepared shot causes a disruptive pop-up.
- Fixed an issue where when connected to iNews and deleting, modifying or adding a previous item before the On-Air shot, the positions of the on-air shot moved in the rundown view.
- Fixed an issue where the OverDrive rundown shuffles when applying numbering elements in iNews.
- Fixed an issue where the NRCS plugin freezes when non number value is entered in audio fade rate.
- Fixed an issue where toggling from list view to icon view in the newsroom plugin makes templates disappear.
- Fixed an issue where the on-air shot is no longer highlighted when a secondary CG is updated from the NRCS.
- Fixed an issue where an NRCS rundown of over 200 lines is slow to load.
- Fixed an issue where with Acuity, DirectControl is incorrectly indicating that device keys 4-8 are Prepared/On-Air when they are not.
- Fixed an issue where floating stories causes the on-air shot to jump around the screen.
- Fixed an issue where Cue in Advance did not cue the first clip from a second device.
- Fixed an issue where RundownControl jumped to the top of the rundown when transitioning to a floated story.
- Fixed an issue where two rundowns were simultaneously in a Play state.

UPGRADE CONSIDERATIONS

- Standard upgrade procedures apply

BEHAVIOURAL CHANGES

- The Right-Click “Re-prepare” option is now only enabled when right-clicking on the prepared shot.
- Save option is now disabled for the default “New Rundown” rundown. You must now click “Save As” that will prompt you to save it under another name
- When multiple Audio Variables are assigned to an audio channel will show up as (X,...) on the fader in DirectControl (where X is the last variable invoked).

ENVIRONMENTAL CHANGES

- OverDrive now uses Open Java Development Kit (OpenJDK) as the Java Platform Standard Edition.

OVERDRIVE 19.2.6 – MARCH 20, 2020

ENHANCEMENTS

- Increased RundownControl memory allocation size to 2GB.

BUGS ADDRESSED

- Fixed an issue where adding a QuickRecall video shot did not reshuffle the shot’s cued clip below the QuickRecall video shot.
- Fixed an issue where adding a QuickRecall router shot caused the incorrect router shot to be prepared.
- Fixed an issue where loading audio variable statuses was causing performance issues in RundownControl.

OVERDRIVE 19.2.5 – MARCH 06, 2020

BUGS ADDRESSED

- Provided an option in Advanced Configuration to always cue devices on first available source.

OVERDRIVE 19.2.4 – FEBRUARY 24, 2020

BUGS ADDRESSED

- Fixed an issue where the Conflicts and Exception column does not show missing clip information.
- Fixed an issue where the Client was very slow to initialize with a large live rundown database (1000+ rundowns saved).
- Fixed an issue where the Alias name is missing in the TemplateEditor Bus selection dialog.

OVERDRIVE 19.2.3 – FEBRUARY 12, 2020

ENHANCEMENTS

- Ability to start CG timing using a hot key

BUGS ADDRESSED

- Added support for up to 32 keys in OverDrive with Caprica (6.2).
- There is no longer a pop up when the prepared or on-air shot is updated from NRCS.
- Corrected an issue where prepared custom controls disappear when changing from Monitor Mode to Payout Control.
- Corrected an issue where hot swap took too long to synchronize clip information from the switcher.

OVERDRIVE 19.2.2 – JANUARY 08, 2019

BUGS ADDRESSED

- Corrected an issue that generated exceptions in the logs when video server columns were displayed in RundownControl.

OVERDRIVE 19.2.1 – DECEMBER 12, 2019

ENHANCEMENTS

- New ability to lock source channel assignments.
- New ability to visually group stories in RundownControl.

- New ability to assign crosspoint by name in TemplateEditor.
- New ability to choose either first or next available device channel when Cue in Advance is in use or not.
- New ability to assign source to a variable on open or close when using QuickPicks.
- Addition of more QuickPicks in custom view of DirectControl.

BUGS ADDRESSED

- Corrected an issue where Chyron MOS objects with zero time are not being treated as manual.
- Corrected an issue where RundownControl will not launch on remote workstation.
- Corrected an issue where the red line moves when updating a story in iNews.

OVERDRIVE 19.1.3 – NOVEMBER 22, 2019**BUGS ADDRESSED**

- Corrected an issue where Chyron MOS objects with missing information were not parsed correctly.
- Corrected an issue where re-running a story with manual CG timing was not resetting the CG.

OVERDRIVE 19.1.2 – NOVEMBER 20, 2019**BUGS ADDRESSED**

- Corrected an issue where the primary client keyboard stops working while in On-Air mode.
- Corrected an issue where RundownControl is slow to trigger multiple QuickAudio keywords in succession through switcher events.
- Corrected an issue where an active rundown appears to be simultaneously playing and not playing when another rundown is opened.

- Corrected an issue where Cue in Advance settings are not applied properly when Rundown Control is launched.
- Corrected an issue where when the first timer tab is open, an additional timer tab shows up empty.

OVERDRIVE 19.1.1 – NOVEMBER 1ST, 2019

ADDED SUPPORT FOR ACUITY SWITCHER

- Acuity Switcher support through Caprica 6.1.

ON-AIR MODE

- Users can now enable and disable On-Air mode with a switcher event which provides the ability to build a shot that can automatically enable/disable On-Air mode at any point in the rundown.

ENHANCEMENTS

- New *Enhanced Cue-In-Advance* where when feature is enabled, with four video server channels, only three of the server channels will be cued in advance; remaining channel is not cued. When feature is disabled, with four video server channels, all four of the video server channels will be cued in advance.
- Improved performance of rundown loading for multiple clients and performance of Monitor Mode.
- Added ability to see Streamline asset status from Streamline server.
- Added ability to revert a live rundown.
- Added Variables View info to Floor Director.
- Added UI elements identify on-air and prepared CustomControl in RundownControl.
- Added support to see named memories and busses in OverDrive templates from Caprica (6.1+).
- Added clip duration progress bars in RundownControl.
- Added ability to set Show Value in Variables assignment view in DirectControl.

- Added dedicated Start and Stop keyboard/switcher event actions for timers.
- Added ability to restart all OverDrive services from web server page (Server, Gateway, Web Server).
- Added ability to manually start and stop a timer that is usually triggered by an “automated” command.

BUGS ADDRESSED

- Corrected a rendering issue where timed Secondary CGs taken manually do not revert to Timed state when parent shot is re-prepared.
- Corrected an issue where multiple font resources were being created, causing resource leaks.
- Corrected an issue where hot key (asterisk) does not fire when On-Air mode is active.
- Corrected an issue where RundownControl gets stuck if a new rundown is created with another rundown in playout mode when Multi-Rundown is not licensed.

OVERDRIVE 18.4.10 – MAY 29, 2020**BUGS ADDRESSED**

- Fixed an issue where shots would disappear from folders inside the NRCS plugin after a modification until a restart of the webserver.

OVERDRIVE 18.4.9 – FEBRUARY 08, 2020**BUGS ADDRESSED**

- Corrected an issue where hot key (asterisk) does not fire when On-Air mode is active.

OVERDRIVE 18.4.8 – DECEMBER 16, 2019**BUGS ADDRESSED**

- Corrected an issue where RundownControl would not respect the transition key latch state when transitions are dynamically changed in the rundown.
- Corrected an issue where Cue in Advance settings are not applied properly when Rundown Control is launched.
- Corrected an issue where router names requests were timing out with Vision switchers.

OVERDRIVE 18.4.7 – NOVEMBER 22, 2019

BUGS ADDRESSED

- Corrected an issue where hot key to turn On-Air off does not work when pressed on primary rundown client.
- Improved connection stability between Caprica and OverDrive.

OVERDRIVE 18.4.6 – NOVEMBER 12, 2019

BUGS ADDRESSED

- Corrected an issue where RundownControl hangs when creating a new rundown while another is playing.
- Corrected an issue where Rundown Control and DirectControl have a build up of unreleased GDI objects on application re-draws.
- Corrected a rendering issue where timed Secondary CGs taken manually do not revert to Timed state when parent shot is reprepared.
- Corrected an issue where the primary client keyboard stops working while in On-Air mode.

OVERDRIVE 18.4.5 – OCTOBER 03, 2019

ENHANCEMENT

- Added “shotID” reference to MOS objects.

BUGS ADDRESSED

- Corrected an issue where Smart Quick Recall tabs intermittently stop dynamically updating.

OVERDRIVE 18.4.4 – SEPTEMBER 12, 2019

ENHANCEMENT

- New ability to use a hotkey to enable/disable On-Air mode, ensuring OverDrive clients always have priority over other applications.

BUGS ADDRESSED

- Corrected an issue where the NRCS plugin stops working when a non number value is entered in audio fade rate.
- Corrected an issue where RundownControl jumps to the top of the rundown when transitioning to a floated story.
- Corrected an issue where toggling NRCS plugin from list view to icon view causes templates to disappear.
- Corrected an issue where RundownControl stops working and displays a Java error.
- Corrected an issue where Smart Quick Recall tabs intermittently stop dynamically updating.
- Corrected an issue where the On-Air shot is lost when CG items are updated from the NRCS.
- Corrected an issue where deleting devices with associated templates causes Template Editor to hang.
- Corrected an issue where the OverDrive plug in will not load with Google Chrome 76.0.3809.132.

OVERDRIVE 18.4.3 – AUGUST 21, 2019

ENHANCEMENT

- Improved OverDrive Clients opening times.

BUGS ADDRESSED

- Corrected an issue where Quick recalls, when selected, intermittently freeze the rundown.
- Corrected an issue where updates to custom ITEM_TIMEers were not displaying correct time.
- Corrected an issue where loading the NRCS rundown in the Monitor client affects the OnAir shot.
- Corrected an issue where NRCS plugin search results were clearing when changing the page.

OVERDRIVE 18.4.2 – AUGUST 02, 2019**BUGS ADDRESSED**

- Corrected an issue where multiple variable preset reverse automation events were not working in CustomControls.
- Corrected an issue where OverDrive displayed rundown items out of sequence.
- Corrected an issue where DirectControl faders were slow to respond when moving faders on mixer.
- Corrected an issue where rundown failed to load.
- Corrected an issue where Smart Quick Recalls tab doesn't update upon the initial loading of a rundown.

OVERDRIVE 18.4.1 – JUNE 28, 2019**ENHANCEMENTS**

- New NRCS Item Duration Timer to look at ITEM info instead of total STORY.
- Added Global Option to the Rundown Settings under the Cue in Advance for different prediction algorithms.
- Please note: Options relating to UI elements in RundownControl have been moved from Rundown Settings to Layout Options.

BUGS ADDRESSED

- Corrected an issue where the Floor Director metadata timestamps incorrectly show a 12-hour clock instead of a 24-hour clock.
- Corrected an issue where the timer doesn't follow actual clip time from the server when pre-rolled manually.
- Corrected an issue where there was an ItemDuration TimingSource exception when playing Live Rundown.
- Corrected an issue where "unused" was being displayed for QuickCode when left blank.
- Corrected an issue where the "Take Offline" button was not active on the first pass through a rundown.
- Corrected an issue where Rundown needs to be reloaded to see new RO Start/End/Dur timers from NRCS.
- Correct an issue where there is an uncaught exception in Rundown client.

OVERDRIVE 18.3.4 – MAY 27, 2019**ENHANCEMENTS**

- When closing and reopening the NRCS plugin, the list view column sizes will be cached.

BUGS ADDRESSED

- Corrected an issue where when building templates, Template Editor will incur an error message.
- Corrected an issue where the child folder of the deleted parent persists in the NRCS plugin when the webpage is refreshed.

OVERDRIVE 18.3.3 – MAY 15, 2019**ENHANCEMENTS**

- When CG Timing is "disabled" globally or by toggling the CG shot or story, both *Manual* and timing info will be displayed.

BUGS ADDRESSED

- Corrected an issue where changing folders in the NRCS with lots of icons caused the plug-in to be slow.
- Corrected an issue where columns would glitch and shift in Rundown Control.
- Corrected an issue where clocks on the Director's Rundown Control client disappear momentarily when another rundown is loaded on a Coding Client.

OVERDRIVE 18.3.2 – MAY 3, 2019**ENHANCEMENTS**

- Improvement to show detailed status of clips from Streamline.
- Added advanced configuration options for increased logging on Event Bus and Hibernate EDT.

BUGS ADDRESSED

- Corrected an issue where RundownControl was occasionally freezing while retrieving XPression thumbnails.
- Corrected an issue where duplicate audio sources appeared in the on-air fader list in DirectControl and the SideSlide.

OVERDRIVE 18.3.1 – APRIL 16, 2019**BUGS ADDRESSED**

- Corrected an issue where RundownControl has floating empty boxes.
- Corrected an issue restoring backups from OVD 12 and below.
- Corrected an issue where clip is cued on different channel in Preview.
- Corrected an issue in RundownControl where "disabled" timers are restored as "manual".
- Corrected an issue where enable/disable CG timing hotkey icon was not updated when triggered through a hotkey.

OVERDRIVE 18.3 – APRIL 05, 2019

STREAMLINE THUMBNAILS

- Added the display of Streamline thumbnails in the Rundown Control Thumbnails column and in the Preview View.

CUSTOM PERSPECTIVE IN DIRECT CONTROL

- New perspective to create a custom layout of Views.

VARIABLES PERSPECTIVE IN DIRECT CONTROL

- New perspective to assign Variables Sources and optionally lock their values.

ENHANCEMENTS

- Licencing server (needs upgrading) now automatically re-activates existing product key for a new version of software.
- Ability to create subfolders for shots and templates.

BUGS ADDRESSED

- Corrected an issue where rundowns were loaded with missing MOS elements.
- Corrected an issue where setting variables and using them in the same shot was not 100% reliable.
- Corrected an issue where NCS Customer Timer is not firing Custom Controls after first invocation.

OVERDRIVE 18.2.5 – MARCH 25, 2019

ENHANCEMENT

- Improvement for handling incomplete roStorySend messages where Dalet removes timing information for graphics.

OVERDRIVE 18.2.4 – MARCH 21, 2019

BUGS ADDRESSED

- Added an option to send empty cue message for missing clips or send nothing.

- Corrected an issue where hotkeys could not be mapped to manual timers (stop start, reset) in RundownControl.

OVERDRIVE 18.2.3 – MARCH 18, 2019

BUGS ADDRESSED

- Corrected an issue where Video Server clip IDs do not collapse into NRCS shots created before 17.3.
- Corrected an issue where MOS Abstract Column shows info for only one clip per story.
- Corrected an issue where clip timers were being displayed inconsistently.

OVERDRIVE 18.2.2 – FEBRUARY 2019

BUGS ADDRESSED

- Corrected an issue where on-air and prepared bars move to the wrong shots on NRCS update.
- Corrected an issue where several created shots disappear from their pinned position in the Quick Recall Tab once RundownControl is closed, then eventually opened again.

OVERDRIVE 18.2.1 – FEBRUARY 2019

BUGS ADDRESSED

- Corrected an issue where RundownControl became “Not Responding” and showed java error message.
- Corrected an issue where QuickCode does not appear on default video server template shots.

OVERDRIVE 18.2 – JANUARY 2019

ADDED SUPPORT FOR CARBONITE ULTRA

- Included in the driver for Carbonite Ultra: Support for Mapping Mini MEs and Multi-Screen Canvases as Program/Preset, floating or fixed MEs for OverDrive.

TRACK AUDIO VARIABLE CHANGES

- An added setting in RundownControl to give the option of:
 - Tracking all changes to Audio Variables in the Variables View.
 - Tracking only Show Value changes to Audio Variables in the Variables View.
 - Turning off Tracking of changes to Audio Variables in the Variables View.

VARIABLE PRESETS VIEW

- A new View in RundownControl that contains 72 Configurable Variable Presets.

ENHANCED VARIABLE PRESETS

- The Variable Presets now consist of a mandatory Variable QuickAudio and an optional Channel QuickAudio to be applied.
- In addition:
 - The Variable QuickAudio can be applied to the “Next”, “Assigned”, or both Variable values.
 - The Channel QuickAudio can be applied to the “Prepared” audio, “On-Air” audio, or both.

PRE-PREPARE NEXT

- In RundownControl, added the ability to prepare another Primary shot without affecting the currently prepared Secondary Manual CG Shot:
 - Through the right-click menu of a Shot.
 - Through the Playout Menu.
 - Through a Hot key.

ENHANCEMENT

- Ability to have the Program Keyers View Buttons displayed side-by-side.

BUGS ADDRESSED

- Corrected an issue where the "Grid View" option in the SQR View was flashing often when playing through a rundown.
- Corrected an issue where Icelandic text was not displaying Correctly in the Story Text View.
- Corrected an issue where editing a Newsroom Shot in RundownControl would cause it to lose its QuickCode.
- Corrected an issue with 'Unknown Error' displayed in the Web Admin System Services page for SSL support.
- Corrected a rendering issue that occurred after deleting the last Live Rundown tab.

OVERDRIVE 18.1.4 – JANUARY 2019**ENHANCEMENT**

- Open and Close Rundown icons are now available after RundownControl times out waiting for a rundown from the NRCS.

BUGS ADDRESSED

- Corrected an issue where clearing a CustomControl in the NRCS plugin was causing shots to save incorrectly.
- Corrected an issue in the timing of sending out roAck messages from the MosGateway.
- Corrected an issue where QuickAudio was being discarded on transitions without prepare.

OVERDRIVE 18.1.3 – JANUARY 2019**ENHANCEMENT**

- Added compatibility for encoded payloads from XPression.

BUGS ADDRESSED

- Corrected an issue where Additional Audio was sometimes disappearing from coded shots in the NRCS plugin in Chrome.
- Added an advanced debug option to block audio updates after each transition.

OVERDRIVE 18.1.2 – DECEMBER 2018

ENHANCEMENTS

- Close Rundown icon is now available before rundown is finished loading.
- Improved stability of FloorDirector service.

BUGS ADDRESSED

- Corrected an issue where CustomControls were showing as invalid in RundownControl.
- Improvements to RundownControl layout persistence when loading and closing rundowns.
- Corrected an issue where RundownControl could freeze during opening of a rundown when Multiple Rundowns is not licensed.
- Corrected an issue where RundownControl could not play a rundown after opening another rundown.
- Corrected a port offset issue for DigiCart devices in TemplateEditor.
- Corrected an issue where a manual secondary CG was not prepared after an empty story.
- Corrected an issue where default video server templates were ignoring itemChannel info.
- Update to address an intermittent out of focus issue between DirectControl and RundownControl.

OVERDRIVE 18.1.1 – NOVEMBER 2018

ENHANCEMENT

- Config for plugin is now accessed in config.xml rather than registry keys.

BUGS ADDRESSED

- Corrected an issue where an SQR disappeared upon floating the story in NRCS.
- Corrected an issue that was causing stories to appear at the bottom of the rundown when multiple rundowns were open.
- Corrected an issue parsing MOS messages that caused stories to disappear.
- Corrected an issue that would not allow users to close a rundown (when receiving a roReplace MOS message).
- Corrected an issue where the MEs and Buses tab was not showing the crosspoint list.
- Corrected a timing issue for Device Audio.

OVERDRIVE 18.1 – OCTOBER 2018**AUDIO VARIABLES**

- Variable Audio allows you to create “virtual audio sources” that act as a router or layer of abstraction when building your production.
- Users can build generic templates with Variable Audio Sources and then during show preparation or throughout a show to “route” different real channels to be used.
- During the Show the users can use Variables, QuickAudio and the new Quick Audio Grouping functionality to assign the audio using keywords -- like presenter names or studio locations – notes already used by producers and directors.

QUICKAUDIO

- Added ability to add multiple sources to a keyword.
- Added ability to set Variables with keywords.
- Added ability to add keywords to Additional Audio when building templates.

ENHANCEMENTS

- Ability to “Clear” CustomControls in Template Editor, RundownControl, and the NRCS plugin.
- OverDrive Prime now includes Multiple Rundowns feature.
- All OverDrive editions now include SNMP.

OVERDRIVE 17.3.16 – NOVEMBER 22, 2019

BUG ADDRESSED

- Corrected an issue where hot key to turn On-Air off does not work when pressed on primary rundown client.

OVERDRIVE 17.3.15 – NOVEMBER 13, 2019

BUG ADDRESSED

- Corrected an issue where the primary client keyboard stops working while in On-Air mode.

OVERDRIVE 17.3.14 – SEPTEMBER 19, 2019

ENHANCEMENT

- New ability to turn On-Air mode on and off, ensuring OverDrive clients always have priority over other applications.

OVERDRIVE 17.3.13 – MARCH 19, 2019

ENHANCEMENT

- Added an advanced debug option to analyze transition delays.

OVERDRIVE 17.3.12 – MARCH 2019

BUGS ADDRESSED

- Corrected an issue where the on-air and prepared bars move to the wrong shots on NRCS update.

- Corrected an issue where Quick Codes are not updating correctly from the NRCS.
- Corrected an issue where Missing Clip Dialog is not following the popup checkbox settings.

OVERDRIVE 17.3.11 – JANUARY 2019

ENHANCEMENT

- Open and Close Rundown icons are now available after RundownControl times out waiting for a rundown from the NRCS.

BUGS ADDRESSED

- Corrected an issue in the timing of sending out roAck messages from the MosGateway.
- Corrected an issue where QuickAudio was being discarded on transitions without prepare.
- Corrected an issue with missing clip warning status not appearing correctly.
- Corrected an issue where the edit shot dialog did not pop up correctly when missing a clip.
- Corrected an issue that affected transition performance and reliability.

OVERDRIVE 17.3.10 – JANUARY 2019

ENHANCEMENT

- Added compatibility for encoded payloads from XPression.

BUG ADDRESSED

- Added an advanced debug option to block audio updates after each transition.

OVERDRIVE 17.3.9 – DECEMBER 2018

ENHANCEMENTS

- Close Rundown icon is now available before rundown is finished loading.

- Improved stability of FloorDirector service.

BUGS ADDRESSED

- Corrected an issue where CustomControls were showing as invalid in RundownControl.
- Improvements to RundownControl layout persistence when loading and closing rundowns.
- Corrected an issue where RundownControl could freeze during opening of a rundown when Multiple Rundowns is not licensed.
- Corrected an issue where RundownControl could not play a rundown after opening another rundown.
- Corrected a port offset issue for DigiCart devices in TemplateEditor.
- Corrected an issue where a manual secondary CG was not prepared after an empty story.

OVERDRIVE 17.3.8 – NOVEMBER 2018**BUGS ADDRESSED**

- Corrected an issue parsing MOS messages that caused stories to disappear.
- Corrected an issue that would not allow users to close a rundown (when receiving a roReplace MOS message).
- Corrected an issue where the MEs and Buses tab was not showing the crosspoint list.
- Corrected a timing issue for Device Audio.
- Update to core User Interface library to address an intermittent out of focus issue between DirectControl and RundownControl.

OVERDRIVE 17.3.7 – OCTOBER 2018**ENHANCEMENTS**

- Rundown table now contains a new “MOS Abstract” column.

- Added a MOS CG Device option in Template Editor to allow a “Force re-cue when manually triggering Secondary Event CGs”.

BUGS ADDRESSED

- Corrected an issue where on-air video source information is displayed incorrectly.
- Corrected an issue where Toggle CG Timing was not being persisted across multiple sessions.
- Corrected an exception in the log (CommandBindingFacade).

OVERDRIVE 17.3.6 – SEPTEMBER 2018**BUG ADDRESSED**

- Corrected an issue with predictive cue in advance.

OVERDRIVE 17.3.5 – SEPTEMBER 2018**BUGS ADDRESSED**

- Corrected an issue where QuickAudio Keywords were not working when using default server templates.
- Additional logging information for transitions.

OVERDRIVE 17.3.4 – SEPTEMBER 2018**BUG ADDRESSED**

- No longer sending Cue commands for manual secondary events when taking them to On-Air. Cue command will remain when manual secondary events are prepared only.

OVERDRIVE 17.3.3 – AUGUST 2018**CONFIGURABLE RUNDOWN CONTROL TIMER SIZES**

- Option to increase/decrease the text and timer size to pre-determined sizes (Smallest->Extra Large) is now available.

BUGS ADDRESSED

- Corrected an issue when using arrow keys for hot keys was throwing an error.
- Performance improvement in the Newsroom Plugin for Filtering CustomControls.

OVERDRIVE 17.3.2 – JULY 2018**CUSTOMIZE RUNDOWN TABLE BACKGROUND COLORS**

- You can customize almost all the background colors that RundownControl uses to report the status of shots in the Rundown table. You cannot change the background color of the prepared or on-air shots. OverDrive saves your user-defined background colors with your user profile.

BUGS ADDRESSED

- Corrected an issue where moving or inserting a story was going to the bottom of the rundown in Rundown Control when multiple rundowns were open.
- Corrected an issue where having a custom timing source would stop the system from performing database replication.
- Corrected an issue that was causing delays in the Plugin when adding CustomControls to a shot.
- Corrected an issue accessing/cueing clips on video servers assigned to a crosspoint greater than 128.
- Rundown list is now sorted by start time.

OVERDRIVE 17.3.1 – JUNE 2018**RUNDOWN TABLE COLUMNS**

The Rundown table in RundownControl contains the following new columns:

- Transition — the transition the shot is coded to.

- Server Channel — the server channel a video clip is cued on.

CONFIGURABLE SHORT ROW FONT SIZE

- Option to increase/decrease the font size to pre-determined sizes (Smallest->Extra Large) is now available.

ENHANCEMENTS

- Program keyers are treated as on-air configuration option to treat Program keyers as on-air and report the channels used by the on-air shot as in use. When OverDrive prepares the next shot, it will perform cueing on channels not used by the on-air shot.
- QuickAudio and QuickCode columns are now bold and easier to read.

BUGS ADDRESSED

- Corrected an issue where MOS video server templates were not distinguished between channels as defined in their device template.
- Corrected an intermittent issue causing OverDrive to freeze during a hot swap.

OVERDRIVE 17.3 – JUNE 2018

CG TRIGGERING OPTIONS

For MOS CG shots you can select a native CG command and a CustomControl to automatically run at when OverDrive triggers a CG-IN, CG-OUT, or CG-RESUME. The commands and CustomControls to run for a trigger are set in the MOS CG device Master template. Triggers work with manual or timed CGs, and with primary shot or secondary event CGs. The table below shows how Over-Drive performs triggers under manual and timed CG control.

Trigger	Manual CG	Timed CG
CG-IN	Click the Transition button to take the prepared CG online	NRCS CG IN Time
CG-OUT*	Click the Take Offline button in the CG Control view	NRCS CG OUT Time
CG-RESUME	Click the Resume button in the CG Control view	Click the Resume button in the CG Control view

Note

Native CG options for Out and Resume are not supported on Vision Switchers. A CustomControl must be defined.

RUNDOWN TABLE COLUMNS

The Rundown table in RundownControl contains the following new columns:

- FloorDirector Cue — the FloorDirector cue associated with the shot.
- Shot Name — the name of the shot.
- Slug Name — the slug name from the NRCS story associated with the shot.
- Template Name — the Master template name and number used in the shot.
- Clip Information – the clip name.

ENHANCEMENTS

- Devices can go up to PAN NET 64.
- Postgres Database has been upgraded to version 10.3.
- Optimized the code storing/accessing the Hot Keys.
- ClipName has been added to the FloorDirector timers endpoint.
- Restricted maximum disk space for temporary console log files to 100MB.

BUGS ADDRESSED

- Restricted NRCS plugin to only allow “Audio Only” for Audio only transitions.
- Update to core User Interface library to address intermittent out of focus issue between DirectControl and RundownControl.
- Corrected publishing NRCS custom timers through FloorDirector API.
- Corrected an invalid FirstChild error found in the logs.
- Corrected an issue rendering Icelandic text.

OVERDRIVE 17.1 – MARCH 2018**2 ME SWITCHER OPERATION WITH OVERDRIVE**

When your OverDrive system uses a 2 ME switcher, you must configure OverDrive as follows:

- Define the Copy-Down post transition custom control to use with OverDrive transitions.
- Add the Copy-Down custom control to OverDrive transitions as a post transition custom control.
- Configure OverDrive to use 1 Floating ME.
- Includes Graphite and Rave Support.

POST TRANSITION CUSTOM CONTROLS

For all types of transitions, you can select a custom control to run after the transition finishes.

CONFIGURABLE TRANSITION TIME OUT

For all types of transitions, you can set the maximum number of frames to wait for a transition to complete before advancing the rundown. An Alert dialog box opens when the Program ME transition does not take place before the set maximum timeout.

SELECTABLE DEFAULT TRANSITION

You can select the default transition that OverDrive uses when RundownControl cannot find the transition specified in an NRCS rundown. The default transition is also the initially selected transition for new Master templates

FIXED ME TREATMENT

The Fixed MEs are treated as on-air check box in the Options dialog box enables you to select how OverDrive treats Fixed MEs. Select the check box to treat Fixed MEs as on-air, the default operation mode where you cannot use devices from a Fixed ME in a Floating ME. Clear the check box to use devices from a Fixed ME in a Floating ME. While playing a rundown in RundownControl you can toggle between treating Fixed MEs as on-air or off-air.

OVERDRIVE 16.3.5 – MARCH 2018

BUG ADDRESSED

- Correct an issue where Device xpt was being used to retrieve clip info instead of the device group xpt.

OVERDRIVE 16.3.4 – MARCH 2018

BUGS ADDRESSED

- Correct an issue where copying/pasting XPression CGs in an NRCS caused incorrect rendering of XPression status updates in RundownControl.
- Correct an issue causing GUI freeze in RundownControl.
- Correct an issue causing ConcurrentModificationException in the logs.

OVERDRIVE 16.3.3 – FEBRUARY 2018

ENHANCEMENT

- Improved the performance of parsing MOS messages by executing on multiple threads.

BUGS ADDRESSED

- Correct an issue where FloorDirector timers weren't updated until the user interacts with Rundown Control.
- Correct an issue with Clip timer calculation when values passed are based on time of day rather than duration.
- Correct an issue where changes made to the Story in the NRCS of a shot that was prepared was rendered incorrectly.

OVERDRIVE 16.3.2 – DECEMBER 2017

ENHANCED NRCS TIMING CONTROL OF MOS CG SHOTS AND SECONDARY EVENTS

A typical show can contain many CGs, which OverDrive can control using the timing set in the NRCS for the CGs in a shot. Secondary MOS CG shots that contain timing information use the associated primary shot to start the shot timer. When a primary shot goes on air, the shot timer starts running to control the secondary MOS CG shots associated with the primary shot.

Marking a CG template as a Secondary Event allows OverDrive to look ahead of the CGs and prepare the next Primary shot (Camera, Video Server...) on the PST bus. This will work in both Manual and Timed CG workflows.

FLOORDIRECTOR

FloorDirector enables users to add production cues to a shot through their NRCS and or the Master template they use to create a shot. The FloorDirector Cue view in Rundown displays the production cues contained in the selected, prepared, or on-air shot. Users can also use the FloorDirector Cue view to edit, disable, or enable the production cue associated with a shot.

Using the FloorDirector API, users can also create custom DashBoard panels and web pages to display shot production cues, current rundown, story, template, shot, system status and all timing information.

QUICK CODE

Quick Code enables keywords entered in NRCS rundown columns to assign the six custom controls in the Prepared Customs and the On-Air Customs views for the shots in an OverDrive rundown.

NEW AFTER TRANSITION ACTIONS

For each Transition button in the Transitions view of RundownControl users can select the type of transition to run and an action to preform after the transition completes. The following actions are new for OverDrive 16.3:

- Transition to Next Primary & Prepare Next — use the selected transition to take the prepared Primary shot on air – skipping all secondary events, and then prepare the next shot in the running order.
- Transition & Reprepare — use the selected transition to take the prepared shot on air, and then reprepare the previously prepared shot without advancing the rundown.
- Transition & Run Customs — use the selected transition to take the prepared shot on air, and then run the custom controls associated with the prepared shot. The previous on-air shot becomes the prepared shot but does not get reprepared.

SET THE NUMBER OF PREVIOUS SHOTS TO DISPLAY

In RundownControl, users can select to display 0 to 5 shots in the Rundown table ahead of the current on-air shot. When a rundown does not contain enough shots to meet the selected number of shots, the Rundown table displays the available shots.

MAINTAIN RUNDOWN TABLE VIEW AFTER NRCS UPDATE

Users can configure the Rundown table in RundownControl to maintain the current view after RundownControl receives a rundown update from the NRCS.

OVERDRIVE 16.2.16 – MARCH 2018

BUG ADDRESSED

- Correct an issue that caused RundownControl to scroll to the top of the rundown when changes were made to the on-air shot.

OVERDRIVE 16.2.15 – FEBRUARY 2018

BUG ADDRESSED

- Correct an issue that caused RundownControl to freeze.

OVERDRIVE 16.2.14 – FEBRUARY 2018

ENHANCEMENTS

- Improved the performance of parsing MOS messages by executing on multiple threads.
- Added Cue in Advance Delay parameter to troubleshoot timing issues.

BUGS ADDRESSED

- Enabled the ability to save story text colour and size between sessions.
- Correct an issue when the next transition is video only, so audio channels that are prepared will now follow the on-air settings.

OVERDRIVE 16.2.13 – JANUARY 2018

ENHANCEMENTS

- UHD Support.
- Option to “Send MOS Status” in video server and char gen templates.

OVERDRIVE 16.2.12 – DECEMBER 2017

DEVICE SUPPORT

- Added MOS support for ChyronHego PRIME.

ENHANCEMENTS

- Added an option in MOS Video Server and MOS Char Gen device configuration "Send MOS Status", which will send out roltemStat updates for those devices when in RundownControl "Send Playout Status to the NRCS" is also checked.
- Use default switcher frame rate or 50 when we do not receive the objTB field in a MOS message.

BUGS ADDRESSED

- SQR names may contain commas.
- Correct an issue with restoring config files when a legacy setting is not recognized.
- Fixed an exception in DirectControl when transitioning with many audio channels.
- Correct an issue where DirectControl Custom Control buttons with pauses would remain green after the duration of the CC.
- Correct an issue causing the on-air shot to be changed or moved when floating or unfloating a story above it in iNews.
- Improvement to the performance of requesting templates and shots.
- Improvement of error handling and memory performance in Plugin.

OVERDRIVE 16.2.11 – SEPTEMBER 2017**BUGS ADDRESSED**

- Cleanup of Plugin code including the removal of legacy code, enabling of gzip compression of REST API, and additional error handling for large messages.
- Correct a memory leak in the OverDrive MOS Gateway.
- Correct an issue that showed previously saved shot description in a subsequent shot.

- Correct an issue causing a deadlock in RundownControl.
- Correct an issue where selecting a camera as a crosspoint can cause the camera to re-perform a shot recall.

OVERDRIVE 16.2.10 – SEPTEMBER 2017

BUGS ADDRESSED

- Removed F1 hot key binding to Help content in Direct Control.
- Correct an issue with DirectControl error message handling (EDT) that could cause undesired behavior in the UI.
- Correct an issue where in certain scenarios Hot Swap was causing the client to freeze.
- Correct an issue that allowed you to open the same rundown in multiple tabs (one shows as empty).
- Correct an issue where Freezing/Unfreezing page numbers in ENPS after a rundown is loaded will change the tab to the nonactive rundown.
- Correct an issue that was displaying an invalid warning message when exiting RundownControl.

OVERDRIVE 16.2.9 – AUGUST 2017

ENHANCEMENT

- Introduced a warning pop up prior to a HotSwap when replication has not completed.

BUGS ADDRESSED

- Correct an issue where HotSwap was failing if the config.ini was incomplete.
- Correct an issue where folders were duplicated in the OverDrive Plugin if the folder name had trailing spaces.
- Correct an issue where renaming shot folder causes the shots to lose template references and become an audio only shot.
- Correct an issue where Plugin shots are not reflecting correct status.

OVERDRIVE 16.2.8 – AUGUST 2017

ENHANCEMENTS

- Ability to modify Java Message Service persistent mode.
- Added API call to enable “warm” backup for redundant Ross Switchers.

BUGS ADDRESSED

- Correct an issue when modifying stories in Dalet Galaxy causes shots to disappear in RundownControl.
- Correct an issue to display correct CG Timing info when using Orad Maestro CG.
- Correct an issue causing null pointer exceptions in the logs.

OVERDRIVE 16.2.7 – JULY 2017

ENHANCEMENT

- Additional logging and default logging length changed to 7 days.

BUGS ADDRESSED

- Correct an issue where RundownControl was missing NRCS updates in the rundown when multiple rundowns were open.
- Correct an issue where unfloating a story causes the story to be added to the bottom of the rundown.
- Correct an issue where RundownControl was preventing users to enter Monitor mode.
- Correct a RundownControl crash.
- Correct an issue where RundownControl was not showing or was delaying population the list of available NRCS rundowns.
- Correct an issue where hitting a hot key in DirectControl was causing a “Unable to do transition...” error message in RC.
- Correct an issue that was causing RundownControl to crash if the log file name was changed.

- Correct an issue where Playout status to NRCS option was not being persisted in RundownControl.

OVERDRIVE 16.2.6 – JUNE 2017

ENHANCEMENTS

- SNMP support for licensing server.
- Configurable option to set the number of shots that appear in the rundown prior to the on-air shot.
- 64-bit compatible plugin (for 64-bit NRCS).

BUGS ADDRESSED

- Correct an issue when RC takes the on-air out of view if there are changes in the rundown.
- Correct an issue where MEs and Buses were being lost for certain shots in the plugin.
- Correct an issue with multiple rundowns being open and error message “Unable to do transition” being displayed.
- Additional fix for redraw issues experienced in RundownControl.

OVERDRIVE 16.2.5 – JUNE 2017

ENHANCEMENT

- Additional logging for cue in advance feature.

BUGS ADDRESSED

- Correct RundownControl hang experienced when opening rundown folder.
- Correct RundownControl hang on startup.
- Correct redraw issues experienced in RundownControl.
- Correct issue with gateway status LED indicator in RundownControl.

- Corrected intermittent issue causing primary client displaying “OverDrive lost on air and prepared shots...” when redundant client opens the same rundown.
- Correct issue with missing AFV source fader in preview fader view in DirectControl.
- Corrected MOS handling/sending of heartbeat messages to a NCS.

OVERDRIVE 16.2.4 – MAY 2017

ENHANCEMENT

- Advanced configuration to allow AFV to be turned OFF after transitions.

BUGS ADDRESSED

- Correct memory leak in RundownControl, and the server.
- Disabled hot keys on client when RundownControl is in monitor mode.
- Corrected MOS handling of roDelete messages that come from an NCS.
- Corrected MOS message handling for rundowns with QR/SQR.
- Corrected a deadlock in RundownControl which was causing the client to hang.
- Revert nested <mos></mos> submission.

OVERDRIVE 16.2.3 – APRIL 2017

BUGS ADDRESSED

- Less verbose logging for the licensing feature to unclutter and reduce the system logs.
- Proper handling MOS messages with nested <mos></mos> tags so that the messages are not truncated after the first occurrence of the ending </mos> tag.
- Fix for Rundown Control: when the open rundown dialogue is opened, and the NRCS Rundowns tab is selected and then closed without opening a story,

the list of stories continues to show the story after it has been unmonitored in the NRCS.

OVERDRIVE 16.2.2 – MARCH 2017

ENHANCEMENT

- Extended MOS ID character limit to 64 character from 32 characters.

BUG ADDRESSED

- Prevent parent template from being deleted when it is referenced from another template.

OVERDRIVE 16.2.1 – MARCH 2017

BUGS ADDRESSED

- Corrected the UI in RundownControl to enable/display Customer Control transitions.
- Corrected ability to set shots as “First to Prepare” when rundown is detached.
- Corrected issue with opening a live rundown.

OVERDRIVE 16.2.0 - FEBRUARY 2017

ENHANCEMENTS

- Added support for new licensing capability for OverDrive and Caprica products.
- Added ability to append live rundowns.
- Added capability to associate a master template for each MOS Video Server device.
- Provide ability to define secure HTTP for OverDrive web server.

BUGS ADDRESSED

- Improved communication and data shared with monitoring clients when playing a rundown.

- Share network setup between all OverDrive clients (RundownControl, DirectControl, TemplateEditor).
- Correct memory leak issue in OverDrive server process.

OVERDRIVE 16.1.6 – MAY 2017

BUGS ADDRESSED

- Updated database hibernate library to 0.9.5 to address out of memory errors seen with Postgres.
- Revert nested <mos></mos> submission.
- Corrected MOS handling of roDelete messages that come from an NCS.
- Corrected MOS handling/sending of heartbeat messages to a NCS.
- Increased router response timeout from 5s to 30s.

OVERDRIVE 16.1.5 – APRIL 2017

BUGS ADDRESSED

- Opening Direct Control pops up a database error window, but DC will still connect to DB.
- When roListAll MOS message is empty, the last rundown unloaded remains in Rundown Control open rundown list.
- Scrolling away from the On-Air shot, selecting another shot, and then hitting the Home key to Jump To On Air Shot is not working when using a Dalet NRCS rundown.
- Gateway truncates MOS messages when they contain nested MOS tags.

OVERDRIVE 16.1.4 – MARCH 2017

BUG ADDRESSED

- Warning icon in the Exceptions column of Rundown Control was missing when there was an incomplete video clip for the shot.

OVERDRIVE 16.1.3 - DECEMBER 2016

BUGS ADDRESSED

- Performance improvement to RapidRestore by not restoring the device clip table since the values will be updated when the OverDrive server connects to the switcher.
- Corrected a memory leak in RundownControl when adding Smart Quick Recalls.
- Corrected a memory leak in the OverDrive server when playing a rundown.
- Performance improvement made to the JMS messaging when playing a rundown.

OVERDRIVE 16.1.2 - NOVEMBER 2016

BUG ADDRESSED

- Corrected issue whereby the CG information was not cleared when copying an SQR into a rundown.

OVERDRIVE 16.1.1 - NOVEMBER 2016

BUGS ADDRESSED

- Introduced an optimization for the processing of cued in advance messages in Rundown Control to improve performance.
- Adjusted the runtime parameters for RundownControl to take better advantage of the Java 8 garbage collection and memory management.
- Correct an issue with the accessibility of the Play button in RundownControl following a HotSwap operation.

OVERDRIVE 16.1.0 - NOVEMBER 2016

ENHANCEMENTS

- RundownControl status view displays summary information about the defined gateways, servers, switchers, databases and opened NRCS rundowns.
- Ability to define row height as a Rundown Control option.
- Update to the layout of some of the pages in the OverDrive web server to better manage different browser dimensions.

BUGS ADDRESSED

- Adjusted parsing of the channel name for MOS templates to be case insensitive.
- Corrected shot prepare mechanism to wait for operation to complete before cuing clips.
- In Rundown Control, extended ability to play a rundown from a detached window.

OVERDRIVE 16.0.1 - AUGUST 2016

MOS GATEWAY SERVICE

The OverDrive MosGateway application is now defined as a Windows service (like the OverDrive server and Jetty services) as opposed to a standalone Java application in earlier releases. Therefore, the gateway service is automatically executed when the server is started. It is no longer necessary to log onto the primary or redundant servers and manually start the gateway application.

The OverDrive web server page supports the ability to configure the MOS Gateway service, view its log files and manage the service (e.g. start/stop/re-start).

SUPPORT FOR MULTIPLE NRCS GATEWAYS

The MOS Gateway capability has been expanded to support the installation, configuration, and access to different NRCS systems. This new feature allows a site to access rundowns from different MOS Gateways (and potential different types of NRCS servers) from their primary and redundant servers.

The configuration of each MOS gateway is managed from the OverDrive web server page, and the RundownControl application provides the ability to choose rundowns from any of the MOS Gateways.

Since the existing Gateway LED indicator may be insufficient when multiple MOS Gateways are defined, a new “MOS Gateway Status” view is available in RundownControl to view the status of each defined MOS Gateway.

SUPPORT FOR MULTIPLE RUNDOWNS

The OverDrive RundownControl application supports the ability to open more than one rundown simultaneously. The new feature allows a customer to open live and NRCS rundowns at the same time, to play any of the rundowns and to easily copy elements between rundowns.

FIRST PREPARED SHOT

By default, the first shot in a rundown is prepared when a rundown enters into ‘Play’ mode. A new feature was added allowing the user to specify the initial shot that is to be prepared when the play button is pressed.

NRCS TIMER ENHANCEMENT

The system has been extended to allow the user to define new NRCS timing sources and to modify any existing ones. The timing values are initially taken from the NRCS story and displayed by RundownControl during playout. The timing sources are managed from the OverDrive web configuration page. A default set of columns has been pre-defined, and the interface allows the user to modify these values or define new entries.

AUTO ADVANCE MODE

A new feature was added as part of the execution of a rundown allowing for the automatic advancement to the next shot without user intervention. The timing between shots can be configured from either a manual timing source or using one of the new timers from the NRCS Timer Enhancement feature.

SUPPORT FOR CHYRON POWERCLIPS/XCLYPS AND XPRESSION MOS CLIPS

OverDrive supports the definition of Chyron MOS Server devices and the management of this information when working with NRCS rundowns.

SUPPORT FOR XPRESSION THUMBNAILS

A new display column and view have been added to RundownControl to display a thumbnail of shots containing an XPression CG. The presentation of the new rundown column or the view is optional.

PERFORMANCE IMPROVEMENT

During the development of version 16.0, several enhancements have been made to the underlying code that has resulted in the overall improvement in the performance of the system when playing a rundown.

OVERDRIVE WEB CONFIGURATION PAGE

The look-and-feel of the OverDrive web server has been updated. One of the major changes in the workflow provides the customer with the ability to configure both primary and redundant servers from a single location.

The new web pages include the following new capabilities:

- Definition of the primary and redundant server names,
- Setting the switcher for regular or dual redundancy modes.
- Ability to start/stop/re-start the primary and redundant servers and SNMP services.
- Ability to start/stop/re-start all the MOS Gateway services.

LOG CONFIGURATION

The OverDrive web server has been upgraded to allow the operator to configure the type and level of logging for each type of log file. In previous releases, this logging configuration was set in the web interface or system files had to be modified on the servers and client machines.

The centralization of the log setup will simplify the debugging process and make it easier to work with Ross Video customer support staff when reporting issues. The new interface also introduces the ability to maintain logs over a period of time or by capacity for each log file type.

DAILY BACKUPS

The Daily Backup option (configurable from the OverDrive Server web page) has been upgraded to perform a full diagnostic backup of the primary server and database. The feature allows customers to schedule daily backups of the OverDrive system and to define the number of most recent backups to be kept on the server. In earlier releases, this option only performed a backup of the OverDrive licenses.

OVERDRIVE SERVER AND CLIENT INSTALLATION PROCESS

The OverDrive server and client installation processes support the ability to install a newer version without having to first manually uninstall the existing version on the server or client workstation.

The process also includes the ability to back-up the existing system at the start of the installation process and to restore this information (or any other backup file) once the new version has been successfully installed. During the upgrade to version 16 from 15 or below, users will have to uninstall the previous version. Subsequent upgrades from 16.0 and up will not require a manual uninstallation.

OVERDRIVE SERVER AND CLIENT USER INTERFACE

The OverDrive server web pages and the client application interfaces have been updated.

SUPPORT FOR JAVA 8

The OverDrive application has been upgraded to support Java 8 in this latest release. A java run-time environment is included as part of the Overdrive installation so there is no impact on the server or client systems.

ROW LEVEL REPLICATION

The data replication process has been modified to perform row-level rather than table-level replication between the primary and redundant OverDrive databases. This performance enhancement is expected to help keep the database in better sync more quickly and efficiently.

OVERDRIVE 15.8.12 – NOVEMBER 2017

ENHANCEMENT

- Added MOS support for ChyronHego PRIME.

OVERDRIVE 15.8.11 – NOVEMBER 2017

BUG ADDRESSED

- Fixed an exception in RundownControl when transitioning with many audio channels.

OVERDRIVE 15.8.10 – OCTOBER 2017

BUGS ADDRESSED

- Corrected issues with duplicate folders and renaming folders in the Plugin.
- Fixed an exception that led to crashes in RundownControl on a transition.

- Changed the Quick Audio “NRCS MOS Column Tag” to be case-sensitive and will update correctly.

OVERDRIVE 15.8.9 – JUNE 2017

BUGS ADDRESSED

- Increased router response timeout from 5s to 30s.
- Reverted change for nested MOS tags.

OVERDRIVE 15.8.8 - APRIL 2017

BUGS ADDRESSED

- Corrected an issue where audio would go to air at default level instead of 0 when faders were paired in DC.
- Ensured the Gateway will not truncate MOS messages when they contain nested MOS tags.

OVERDRIVE 15.8.7 - OCTOBER 2016

BUGS ADDRESSED

- Updated Hibernate library for better database handling.
- Removed the device clip table from the rapid restore process.

OVERDRIVE 15.8.6 - OCTOBER 2016

ENHANCEMENT

- Included the ‘append’ function previously available in version 12. The function allows user to append any Live Rundown to the currently opened Live Rundown.

OVERDRIVE 15.8.5 - OCTOBER 2016

BUG ADDRESSED

- Corrected an issue that prevented OverDrive from determining when the custom control transition had completed.

OVERDRIVE 15.8.4 - OCTOBER 2016

BUGS ADDRESSED

- The QuickTurn column in the RundownControl interface was not being correctly updated when using the 'OD Template and NRCS column option.
- For Dual Switcher Redundancy mode, corrected problem where the transitions to the redundant switcher were not being sent at the correct time. Also corrected issue where transitions were being sent twice to the switcher.
- Updated missing information for the CG information column in RundownControl.
- Improved shot processing to more accurately determine when a transition has been completed.
- Restored earlier support for external still stores.

OVERDRIVE 15.8.3 - AUGUST 2016

BUGS ADDRESSED

- Corrected an issue where a clip was being cued and taken on air incorrectly.
- The menu option to delete individual quick recalls or smart quick recalls was not properly enabled.
- On Vision switchers, OverDrive was not managing multi-keyers correctly when an 8 keyer code was being committed.
- CG MOS ID values extended from 32 to 64 in length.
- Added default MOS Server template capability for Chyron XClips.

OVERDRIVE 15.8.2 - JULY 2016

BUGS ADDRESSED

- Improved the performance in RundownControl when transitioning shots.
- Ensure that MLE settings are persisted between RundownControl sessions.
- Corrected parsing issue related to CG timing data from VizRT.
- Corrected audio fader level inconsistency between SideSlide and DirectControl.
- Resolved issue with server sync roll when doing a transition with a key.

OVERDRIVE 15.8.1 - JUNE 2016**ENHANCEMENTS**

- Added assurance that the frame rate defined on the switcher is properly maintained during the RundownControl session.
- Improved the execution and display performance in RundownControl when playing a rundown.
- Improved the performance when viewing the HotKeys panel in RundownControl.
- Corrected the issue with using the clip list filter in DirectControl.
- Ensure that for video only transitions, a change in the preview audio is independent of the program audio.

OVERDRIVE 15.7.6 - MAY 2016**ENHANCEMENTS**

- Added support for EVS MOS.
- Resolved RundownControl issue when re-starting session with detached views.

OVERDRIVE 15.7.4 – APRIL 2016**BUGS ADDRESSED**

- Improved management of earlier MOS messages.
- Disable clip durations service on the backup server.

OVERDRIVE 15.7.3 – APRIL 2016

BUGS ADDRESSED

- Corrected audio levels displayed in DirectControl and when shots are in prepared mode.
- Enhanced parsing of page numbers originating from old MOS formats.

OVERDRIVE 15.7.2 – APRIL 2016

BUG ADDRESSED

- Ensure that all shots are properly listed in the NRCS plugin.

OVERDRIVE 15.7.0 – MARCH 2016

SMART QUICK RECALLS

The Smart Quick Recalls (SQR) makes operating OverDrive during shows which combine scripted elements along with unscripted events simultaneously as efficient as possible. It provides auto-generated quick recalls from the rundown called 'Smart Quick Recalls' (SQR) based on NRCS or rundown columns, template numbers or device types.

The SQR views appear in the RundownControl application and provide similar functionality to Quick Recalls.

SUPPORT FOR ANVATO

The Anvato AutoCut device has been added as a new device for the QuickTurn capability.

ALERTS LOG DIALOG ADDED TO RUNDOWNCONTROL

A new alerts log panel has been added to the RundownControl interface (under the View->Log menu item). The new feature will allow the operator to view at any inconsistencies raised by the OverDrive switcher and server. Previously, these alert messages were only displayed to the user at the beginning of their RundownControl session.

OVERDRIVE 15.6.6 – FEBRUARY 2016

QUICKAUDIO

The Quick Audio feature will allow the operator to modify the audio definitions of shots in a rundown from a set of keywords provided in the NRCS story. When the shots are initially sent (or re-sent) by the NRCS, OverDrive will add or modify the audio channel definitions for each shot depending on the keywords provided in the NRCS MOS data.

The QuickAudio definitions are managed in the TemplateEditor and the capability is enabled from the OverDrive web interface.

DEVICE SWAP PERMISSION SETTING

A new permission setting has been added to the OverDrive user profile definition to control access to the Device Swap capability.

By default, all users have access to the Device Swap button in the RundownControl interface to view the set of available devices, cameras, audio and QuickTurn settings. With this new option enable, the operator will have the option to change and perform a Device Swap operation.

The definition and modification of user profiles are managed from the OverDrive web interface.

ACUITY SUPPORT

Added support for 0.5ME and 8 keyers provided by OverDrive.

HOT-SWAP AND STATUS NOTIFICATION ENHANCEMENTS

Users are no longer required to do a connection swap on secondary clients after performing a Hot-Swap. The OverDrive server will notify the clients that a hot-swap has been performed and each client will automatically perform a connection swap to the newly active server.

After a hot-swap, OverDrive will highlight the last prepared shot in yellow to let the user know where they were in the rundown and facilitate the recovery.

OVERDRIVE 15.6 – JANUARY 2016

IMPROVE MANAGEMENT OF VIDEO SERVER CLIPS, STILL STORE FILES ROUTER INFORMATION

As part of 15.6, the information from video servers, still stores and routers are stored in the database to better optimize access to the information by the

OverDrive server and the client applications. The information is automatically updated when the OverDrive server connects with the switcher.

As part of the optimization of the communication between the switcher and the OverDrive server, device groups have been introduced allowing the operator to logically group templated physical devices. Each device group will only request information from the physical device once, and it will share this information with the set of associated template devices.

ENHANCED FILTERING DIALOG

A new filtering dialog has been added in the NRCS plugin and RundownControl for selecting a video clip, still store entry or router value. The new filtering mechanism has been enhanced to operate efficiently with large data sets.

SNMP SUPPORT

An SNMP agent has been introduced allowing the operator to monitor the status of their existing infrastructure and the status of the OverDrive components from any standard SNMP monitoring tool.

SUPPORT FOR CUSTOM CONTROL AUTORUNS

Added support for custom control (CC) autoruns for 'On-Air' and 'Both' modes with the Acuity switcher. The 'On-Air' mode allows the custom control to automatically run when the shot goes on air. The 'both' mode will run the custom control when the shot is prepared and once again when it goes on air.

NRCS CONFORMANCE

Added conformance for ENPS 7.4.3 and iNews 5.3.

OVERDRIVE 15.5 – AUGUST 2015

NRCS PLUGIN INTERFACE RE-DESIGN

Several enhancements have been made to the Newsroom plugin to improve the user experience and system performance. Beginning in the v15.5 release, the plugin will display the shots (or templates) with a fixed number of entries per page (rather than all the entries at the same time). A new set of buttons has been added to the interface allowing the user to navigate to between pages and to set the number of entries per page. The change applies to both the icon and table views. A new sorting criterion has also been added to the icon view

allowing the operator to order the icons by shot name, last modified date, creation date, and template number/shot name.

SUPPORT FOR PIXELPOWER TIMED CGS

The ability to support timed CGS from a PixelPower device has been added to OverDrive.

ADDITIONAL SUPPORT FOR CUSTOM CONTROL AUTORUNS

Added support for custom control (CC) autoruns for 'On-Air' and 'Both' modes. The 'On-Air' mode allows the custom control to automatically run when the shot goes on air. The 'both' mode will run the custom control when the shot is prepared and once again when it goes on air.

MOS DATA ENHANCEMENT

The MOS format data for the NRCS has been upgraded to include the transition and device names.

A new configuration parameter has been added to the OverDrive server to direct the loading of the devices and transitions from the NRCS gateway. By default, the system will associate the devices and transitions with the local installation using the pre-defined unique identifier. Depending on the customer environment, the system will also allow for these MOS objects to be linked with the local environment using the transition or device name.

INSTALLATION AND MANAGEMENT OF THE OVERDRIVE GATEWAY

The OverDrive Gateway is installed as part of the OverDrive Server installation, and the Gateway application is automatically started when the user logs into the system. The Gateway application can be minimized to the Windows taskbar. The application cannot be terminated by pressing the 'X' button at the top right of its window – this action will simply minimize it to the taskbar again. Instead, the Gateway is terminated by selecting the 'Exit' command when right-clicking over its icon in the taskbar. It should be noted that the Gateway is now uninstalled along with the OverDrive Server.

MISCELLANEOUS ENHANCEMENTS

- The OverDrive user interface has been updated to the 'Program' bus as the 'Background' bus. As well, the reference for floating MLEs has also been updated from "MLE 1" and "MLE 2" to "First MLE" and "Second MLE". The changes are reflected in both the Rundown Client and the NRCS plugin.

- The OverDrive Server Web Backup page has been updated to allow the operator to sort the rows by the backup name or date in ascending or descending order. The row sorting is defined by selecting the column headers.

OVERDRIVE 15.4.4 – JUNE 2015

PREPARED CUSTOM CONTROLS

Expanding beyond Caprica to Vision in support for the prepared autorun custom controls. This feature requires the vision release v18.1a or greater.

SERVER

Removed an OverDrive sluggishness condition triggered by restarting the switcher panel while OverDrive is running.

RUNDOWNCONTROL

Audio Channel levels remain intact after performing a device swap.
Resolved an intermittent issue that would prevent enabling monitor mode for some rundowns.

ACTIVEX NRCS PLUGIN

Drag and drop works for shots supporting router devices.
Added a paging scheme and a search capability to the NRCS plugin.

OVERDRIVE 15.4.3 – JUNE 2015

SERVER

Resolved a race condition where RundownControl was provided the program MLE to prepare the next shot. Users observed that RundownControl would skip ahead in the rundown.

RUNDOWNCONTROL

Allow RundownControl to continue connecting to the server following a change in the server's IP address.

OVERDRIVE 15.4.2 – MAY 2015

RUNDOWNCONTROL

- Corrected content in the popup window when a user enters monitor mode.
- IP address or Host name can be used to establish connectivity to the OverDrive server.
- Reference to floating MLE changed from 'First MLE' or 'Second MLE' to '1st MLE' or '2nd MLE'.

RAPIDRESTORE

- Custom Control information associated with RundownControl Quick Recalls are correctly restored.

TEMPLATE EDITOR AND ACTIVEX NRCS PLUGIN

- Replaced the term Program with the term Background on the MLE and BUS Tab.

ACTIVEX NRCS PLUGIN

- Correctly display the MLE and Bus order when a user chooses to edit a template or shot.
- Reference to floating MLEs in the plugin are labelled similarly to RundownControl ('1st MLE' and no longer 'MLE 1').
- Added the device name to the MOS abstract information.

QUICKTURN

- Added a QuickTurn configuration option "OverDrive Templates and NRCS Column" to control the encoding of video.

OVERDRIVE 15.4.1 – MARCH 2015**RUNDOWNCONTROL**

RundownControl will re-prepare the prepare-next and the prepare previous command if a timeout situation occurs with the switcher.

OVERDRIVE 15.3.1 – DECEMBER 2014**RUNDOWNCONTROL**

Enhancement to the MOS data format exchanged between OverDrive and the NRCS system.

OVERDRIVE 15.3 – OCTOBER 2014

GATEWAY

Introducing a checkbox allowing users to disable heartbeat messages sent to the NRCS system. Disabling heartbeat messages should be done if the user observes intermittent disconnects.

RAPIDRESTORE

Fixed some issues relating to RapidRestore to ensure that upgrades to Release 15 were backward compatible and the intended behavior of templates/shots is maintained.

RUNDOWNCONTROL

Reducing the time it takes to load NRCS Rundowns.

OVERDRIVE 15.2.6 – FEBRUARY 2015

AUDIO FADERS

Optimized the functionality to ensure that audio faders are correctly portrayed in DirectControl and the SideSlide module.

OVERDRIVE 15.2.5 – NOVEMBER 2014

HOT KEYS

Hotkey mapping definitions remain intact and continue to function.

OVERDRIVE 15.2.4 – AUGUST 2014

AUDIO

Enhanced the audio functionality to ensure that the correct fader levels are reported in DirectControl and SideSlide.

OVERDRIVE 15.2.2 – AUGUST 2014

RUNDOWNCONTROL

Preventing a client's RundownControl view from scrolling to the top of the running order when another RundownControl client opens a rundown.

OVERDRIVE 15.2 – JULY 2014**RUNDOWNCONTROL**

- Changing PGM MLE message to less intrusive balloon notification.
- Increasing the width of the scroll bar in the rundown display window.

ACTIVEX NRCS PLUGIN

- Expanding the ActiveX plugin to support Dalet.
- Supporting drag and drop functionality with IE8.
- Consistently opening the ActiveX edit window when a NRCS shot is double clicked.

OVERDRIVE 15.1.1 – AUGUST 2014**SHOT EDITOR**

Enhancing the custom control layout in the shot editor. The enhancements allow the user to associate custom controls with the shot or to quickly revert to the custom controls associated with the master template.

CROSSPOINT NAMES

Crosspoint *names* are now displayed as a part of the shot summary in RundownControl and the ActiveX plugin in addition to the crosspoint numbers.

HOT SWAP

Improving the reliability and performance of hot swaps.

EXPANDED MEMORY

Supporting all memories available on the switchers.

CUSTOM CONTROL TRANSITIONS

Addressing a race condition that prevents the next shot to be prepared because OverDrive was not notified in time that the CC transition completed.

AUDIO CHANNEL LIST

OverDrive no longer displays all 240 audio channels names and now limits itself to the audio channels configured on the audio mixer.

NRCS CODING

- Retaining shot information found in ActiveX plugin when the user creates the NRCS shot.
- Properly managing the additional audio channels that are altered while editing a template through the ActiveX plugin.

RUNDOWNCONTROL

- Preventing a second RundownControl client from taking control when entering monitor mode. Also ensure the state of the rundown in the controlling RundownControl Client is mirrored in the RundownControl client that is in monitor mode.
- Eliminating the Save User Preference pop up each time a user closes RundownControl and automatically saving the updated preferences.
- Supporting additional scenarios where floating stories in the NRCS client causes the view in RundownControl to change.

OVERDRIVE 14.1.6 – JUNE 2014**RUNDOWNCONTROL**

- Added robustness functionality to prevent RundownControl from locking up.

OVERDRIVE 14.1.3 – FEBRUARY 2014**INEWS**

- ActiveX plugin corrected to enable editing of OverDrive 12 in the iNews rundown.
- Shots dragged into rundown have the correct audio channels listed.

RUNDOWNCONTROL

- RundownControl properly reflects the list of custom controls defined on the switcher.

TEMPLATE EDITOR

- Support 3-digit wipe number for transitions.

OVERDRIVE 14.1.2 – JANUARY 2014**DIRECTCONTROL**

Adjustment to get the correct list of audio channels in OverDrive after recalling a snapshot on the Studer Vista (check trademark).

OVERDRIVE 14.1.1 – DECEMBER 2013**NRCS PLUGIN USABILITY IMPROVEMENTS**

The user interface of the new NRCS plugin has been streamlined to improve usability. Relevant buttons for updating and saving shots appear on the upper toolbar of the NRCS plugin and the user no longer needs to scroll to the bottom to apply changes to an edited shot.

IMPROVED SUPPORT FOR FIXED MLE TEMPLATES

The new plugin now supports templates with one fixed MLE. RundownControl flags shots and quick recalls associated with a fixed MLE template.

CROSSPOINT NAMES

Crosspoint names are now displayed as a part of the shot summary in RundownControl in addition to the crosspoint numbers.

UPDATED RUNDOWNCONTROL TABLE SCROLL POSITION

Supporting additional scenarios where floating stories in the NRCS client causes the view in RundownControl to change.

NRCS RUNDOWN REDUNDANCY

Enhanced OverDrive data distribution mechanisms to ensure that the Rundown is accurately presented on all RundownControl clients in a redundancy configuration before and after performing a hot swap.

OVERDRIVE 14.1 – NOVEMBER 2013**CUSTOM CONTROL**

Expanded OverDrive to support custom controls on banks 13 through 24.

CUSTOM CONTROL ROWS

Restored the maximum number of custom control rows in RundownControl to 18.

NRCS PLUGIN RELAXED CONSTRAINT ON CHARACTER SETS

Shot names and other fields within the NRCS Plugin now allow the user to enter characters beyond the ASCII character set. This is still limited to the extended ASCII character set and does not imply full Unicode support.

INEWS NRCS PLUGIN

Ensured that the OverDrive plugin retains the IP address of the OverDrive server so that the user does not need to manually re-enter the IP address every time.

QNEWS AND OCTOPUS NRCS

Added support for the objSlug field within the ActiveX NRCS plugin which is needed when working with QNEWS and Octopus.

SERVER SYNC ROLL CLIP STATUS NOTIFICATION

Enhanced RundownControl user interface displays to ensure that the correct clip status information is present.

RESOURCE USAGE SCENARIO

Modified the evaluation of on-air sources for systems configured to use the program MLE as an effects MLE. This is a common scenario for two MLE systems.

OVERDRIVE 14 TO V15.4 – MARCH 2015**ACUITY SWITCHER SUPPORT**

Support has been added for the Acuity switcher. The OverDrive system supports all the Acuity panels: Acuity 1S, Acuity 2M, Acuity 2X, Acuity 3M, Acuity 3, and Acuity 4.

QUICKTURN COLUMN ENHANCEMENT

The QuickTurn capability has been enhanced to ignore leading and trailing spaces from the NRCS column. Therefore, a field containing one or more space characters will be considered as blank by the system.

A new mode has been added that combines the 'NRCS Column' and 'Shot Template' modes.

LIVE RUNDOWNS MOVED TO THE DATABASE

Live rundowns are no longer saved in a file format in a directory. They are now saved in the database which gets automatically backed up when run in a redundant OverDrive server configuration.

3RD PARTY SWITCHER SUPPORT

Utilizing the Caprica third party device controller OverDrive now provides an automation platform that works with non-ROSS switchers whilst providing all the device control traditionally enjoyed by OverDrive users. The set of supported production switchers includes Ross Video Carbonite and Synergy SD, Grass Valley Kayak, and Sony MVS-8000G. Please contact ROSS for details of currently supported 3rd Party switchers or to discuss the support of your desired switcher.

NRCS PLUGIN RELAXED CONSTRAINT ON CHARACTER SETS

Shot names and other fields within the NRCS Plugin now allow the user to enter characters beyond the ASCII character set. This is still limited to the extended ASCII character set and does not imply full Unicode support.

DISPLAYING MOS CG ABSTRACT

A new configuration option has been added in Rundown Control (under Tools->Options->Rundown Settings). By default, the system will display as much of the abstract as possible beginning from the start of the text. When the option "Compress the MOS CG display String" has been checked, the system will display the start and end portions of the text.

OVERDRIVE 12.0.9 – JANUARY 2014**RUNDOWNCONTROL**

Added control logic to prevent duplicate device entries from being entered into the OverDrive Database. The additional database entries would slow down the launch of RundownControl application.

OVERDRIVE 12.0.8 – NOVEMBER 2013**CG MOS OBJECTS FOLDERS**

Resolved an issue where the configured folder in the OverDrive template for MOS objects did not get appended CG graphic name.

SERVER ROBUSTNESS

Added control logic to properly manage updates to the database when dealing with large burst of switcher updates.

SUPPORT FOR NSML VIDEO-ID MOS SERVER WORKFLOW

For a MOS Server workflow that relies on the clip id field being interpreted without a MOS server object in the roStorySend message, a default OverDrive template may now be realized. This is enabled by a setting in RundownControl Options.

UPDATED CUED SHOT INFORMATION

Removed the vagueness in the shot cued text in RundownControl.

SERVER SYNC ROLL

Added robustness functionality to address:

- timing issues cueing back to back video server clips.
- the order of playout channels.
- the synchronization of the redundant channel playing.

RESOURCE USAGE SCENARIO

Modified the evaluation of on-air sources for systems configured to use the program MLE as an effects MLE. This is a common scenario for two MLE systems.

VIZRT

In support of the VizRT PepTalk interface to initialize channels, OverDrive playing a rundown sends additional MOS data to the switcher in support of the VizRT Channel initialization interface.

CG TIMERS

Enhanced the ENPS Control-G syntax Character Generator support to handle MOS objects that have no tags and added an enhancement to handle different timer formats (1:23 and 1'23").

OVERDRIVE 12.0.7 – AUGUST 2013**CTV INSCRIBER WORKFLOW**

Provided support for reading and applying renderer and folder mapping metadata from the Inscribe MOS Gateway ENPS7.1 support.

ENPS 7.1 SUPPORT

OverDrive works with ENPS7.1.2.2044 or better.

OCTOPUS AND QNEWS OBJSLUG SUPPORT

Confirmed that the objSlug field is populated when dropping OverDrive MOS objects into an Octopus or QNEWS NRCS.

OVERDRIVE 12.0.6 – JULY 2013**RUNDOWNCONTROL LATCH KEY DISPLAY**

RundownControl accurately reflects the latched state of each program key on startup.

RUNDOWNCONTROL NRCS STATUS

RundownControl gateway status light now reflects the connectivity of the OverDrive MOS gateway to the currently configured NRCS.

AUDIO MIXER STATUS

Audio fader levels are immediately reflected in DirectControl upon connection to the switcher.

RESIZABLE INDEX COLUMN

The RundownControl index column can now be resized.

OVERDRIVE 12.0.5 – MAY 2013**RUNDOWNCONTROL HOTKEY ASSIGNMENT**

Corrected an issue where re-assigning a hotkey to certain actions would negate the assignment for other actions with the same default key combination.

RUNDOWNCONTROL TABLE SCROLL POSITION

Added logic to maintain the current scroll position within the rundown table as the Newsroom Control System (NRCS) adds, moves or removes above and below the current viewport position.

MOS SERVER WORKFLOW FOR QUANTEL VIDEO SERVERS

Added support for the Quantel MOS object to OverDrive MOS messaging system.

AUDIO CHANNEL NAME CORRECTION FOR LARGE AUDIO MIXERS

Removed the limitation of only 128 switcher configured channel names being passed along to OverDrive.

AUDIO ONLY TRANSITION

Recent switcher versions (16.1d or greater) introduced a special cut command that allows OverDrive to perform a transition that only affects audio. To enable this option in OverDrive:

1. Stop the OverDrive server service.
2. Log onto the OverDrive server machine and open
C:\ross\OverDrive\workspace\Server\.metadata\plugins\overdrive.server\Configuration.ini.
3. Add the following line.
4. audio.cut.enabled=true.
5. Start the OverDrive server service.
6. If applicable, do the same for your redundant server.

DIRECTCONTROL HOTKEY OPTIONS

Introduced two configurable key stroke options in DirectControl. The first option prevents keystrokes from being passed to RundownControl when DirectControl has focus. The second disables keystrokes that affect audio fader movements within DirectControl.

OVERDRIVE 12.0.4 – MARCH 2013

WORKAROUND FOR ENPS STORY TIMER RESET

A configurable option was introduced to work around a known issue in certain ENPS versions where the story timer resets when an roltemStat PLAY message is received from OverDrive (even for subsequent items within the story). To enable this workaround:

1. Close RundownControl.

2. Open

C:\ross\OverDrive\workspace\RundownClient\metadata\plugins\overdrive.rundownclient\Configuration.ini.

3. Add the following lines:

- primary.gateway.nrcs.notify.play.story.change.only=true
- redundant.gateway.nrcs.notify.play.story.change.only=true

4. Start RundownControl.

BACKUP AND RESTORE OF AUDIO MEMORIES

Backup and restore procedures will no longer lose audio memories and stereo pairing information.

OVERDRIVE 12.0.3 – MARCH 2013

PRODUCTION CUES

Removed all restrictions identified in the OverDrive 12.0.2 production cue support.

STORY SLUG CHARACTERS

Removed filtering that prevented special non alpha numeric characters from appearing in the story slug field.

OVERDRIVE 12.0.2 – FEBRUARY 2013

2 MLE SYSTEMS

Corrected a race condition where OverDrive could not prepare a transition because it believed that both MLEs were in use on a 2 MLE system.

VIDEO SERVER CLIP NAMES

When viewing details or editing a shot, long clip names used to push other details from the user's view. Now we limit the presentation of the clip name to the first few and last few characters, preserving the format of all other shot details.

OPENMEDIA USE VIDISPINE MOS OBJECTS

Added support for video servers requiring the use of vidispine objects.

VIDEO SERVER CHANNEL CUING

Addressed an issue where the second channel of a video server would always be selected upon starting a rundown.

CG TIMING INFORMATION

CG Timing information is stopped if a user action is performed to jump to another shot in the rundown. A double click, a prep next, or a prep previous hotkey action will stop the timing information. A switcher GPI event will not affect the CG timing information.

PRODUCTION CUES

A production cue or presenter instruction will be interpreted, and the formatted text will appear in the story text area of RundownControl. Bold, underlined and italic text will also now be displayed, although the format is stripped in our view. Presently we realize the restriction that the text cannot be a combination of the above. That is, you will not see a bold production cue or italic underlined text.

TWO CHANNEL VIDEO SERVERS

Fixed a bug to allow RundownControl to successfully take and prepare two consecutive shots involving a video server with two channels.

MOS MESSAGE PARSING

RundownControl can parse the entire content of a roStorySend message even if the CG timing information is poorly formatted.

RUNDOWNCONTROL TIMER COUNTDOWN

Fixed a bug that broke the clip duration timer functionality.

RUNDOWNCONTROL DEFAULT MOS SERVER

Fixed a bug so that the default MOS server Master template will populate the rundown even if the server is not on the background bus.

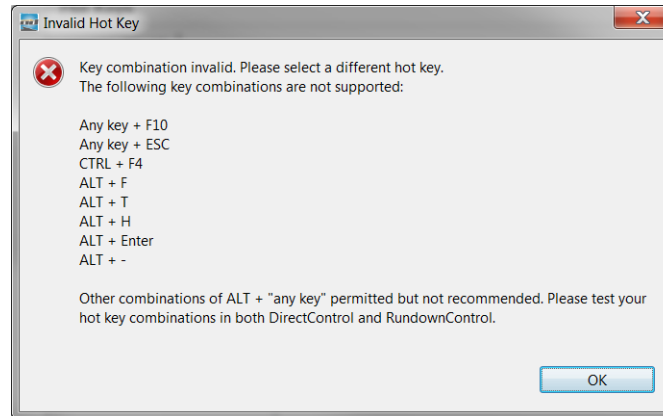
OVERDRIVE 12.0.1 – NOVEMBER 2012

UTF-8 AUDIO CHANNEL NAMES

Corrective content added to support UTF-8 audio channel names arriving from the switcher.

HOT KEY ASSIGNMENTS

A limited set of Hot Key assignments are no longer supported which include ALT + F, ALT + T, ALT + H, ALT + Enter, ALT + - (minus). It is strongly recommended that any new hot key assignment is tested in DirectControl to ensure that RundownControl acknowledges the hot key event. Existing hot key assignments



are preserved over an upgrade.

CROSSPOINT TEMPLATE

If a "Select Crosspoint" template had missing information while in the Rundown table, the user would be prompted to supply the XPT when the shot is prepared. Previously, this supplied XPT information would not be realized in the resulting prepare and take.

AUTORUN CUSTOM CONTROL DELETIONS

NRCS deletions of autorun Custom Controls are properly reflected in RundownControl.

OVERDRIVE 12 TO V14 – NOVEMBER 2013

REDESIGNED ACTIVEX PLUGIN

In OverDrive 14, the newsroom ActiveX plugin has been fully redesigned. With a pleasing look and feel and a user-friendly split and collapsible layout, the new plugin integrates well into the newsroom environment. Users can now easily manage templates and shots by organizing them into folders (please see below for more on shots). The complete redesign of the "shot editor" inside the plugin allows for an easier access to modify and update Custom Controls, audio

channels, and other shot attributes. When working with the server clip list, the plugin allows the user can filter the list based on a given criteria.

INTRODUCTION OF SHOTS

OverDrive 14 now allows for persisting shots directly in the database. In the newsroom ActiveX plugin, users can build shots from templates and cache them in the database for re-use. For an easier identification the shots can be customized with different shot icons. Clip information can also be pre-filled in shots allowing for a quicker workflow. This eliminates the additional step of first dragging a template into the newsroom rundown and then editing the template to fill in the clip data. Once a customized shot is cached in the database, it can be added to any number of stories by a simple drag and drop. If the user so desires, the dragged in shot in the story can be further edited and customized. Shots created in the newsroom plugin can also be assigned as QuickRecalls in RundownControl. This allows for a customized consistent workflow. Once assigned as a QuickRecall, if the user so desires, it can be further customized independently of the parent template.

Please refer to the documentation for details on Template -> Shot relationship and which attributes are propagated from a parent template to a shot and which ones are not.

NEWSROOM COLUMN BASED QUICKTURN SEGMENTS

With OverDrive 14, users can enter QuickTurn segment names directly in the newsroom environment. Please refer to the documentation for details on how to setup the columns in the newsroom. As in the past template-based segmenting is also supported in OverDrive 14.

QUICKTURN ENCODING STATUS IN GLOBALVIEW

Like clips' cue status, QuickTurn encoding status is now reflected in RundownControl GlobalView. One needs to enable the QuickTurn column in RundownControl to view the encoding status. Another QuickTurn enhancement that is new in OverDrive 14 is the ability to enable/disable encoding on the fly from the RundownControl toolbar. For example, one may choose to keep QuickTurn disabled during rehearsals.

LIVE QUICKRECALL UPDATES FOR MONITORING CLIENTS

Assigning and editing of QuickRecalls are now immediately reflected on the monitor clients. In the past, this required a restart of the monitoring RundownControl application.

NUMBER OF MASTER TEMPLATES INCREASED TO FOUR DIGITS

Number of master templates available in the TemplateEditor has now been increased to 9900. In the past the maximum number of templates allowed was 900. The increased number of templates also comes with an intelligent auto increment counter. The increment counter tries to find the first available number when a template is created. Users can either choose to accept the suggested template number or choose a new one. Subsequent new templates will automatically pick the next available number from the last saved one. If the TemplateEditor is re-launched, the increment counter will go back and will find the first available number from start.

TEMPLATEEDITOR – LAST SELECTED TAB IS NOW REMEMBERED

For ease of use, the last edited tab is now remembered when saving a template so that it opens to the same tab the next time a template is edited.

LIVE RUNDOWNS MOVED TO THE DATABASE

Live rundowns are no longer saved in a file format in a directory. They are now saved in the database which gets automatically backed up when running in a redundant OverDrive server configuration.

FILE ASSOCIATION FOR RAPIDRESTORE BACKUP FILES

A minor enhancement was added in OverDrive 14 whereby users can launch the RapidRestore application directly by simply double clicking the .odv5 backup file.

OVERDRIVE FRAME RATE MATCHES THE VIDEO INPUT FRAME RATE

The video frame rate configured on the switcher is now reflected in OverDrive – in particular in calculating Auto-run Custom Control offsets.

FAST AND SNAPPY REDESIGNED DATABASE

The OverDrive database has been refactored in version 14. It now supports an increased number of templates and its performance has been increased.

SEPARATE COLOR CODING FOR MOS-SERVER SHOTS

A separate color coding is now applied in RundownControl for MOS-Server shots so that they can be easily differentiated from MOS-CG shots.

OVERDRIVE 11.0.2 – JULY 2012**ADJUSTABLE ROWS IN RUNDOWNCONTROL**

Introduced a field that sets the display size for a row in RundownControl. The new field in the

C:\ross\OverDrive\workspace\RundownClient\metadata\plugins\overdrive.rundownclient\configuration.ini file is rundown.normal.row.height=n, where n is the row height size specified. The default row size would set n to 60.

GRAY OUT MOS ID FIELD FOR CONTROLAIR

Ensure that the MOS ID field remains grayed out in the TemplateEditor Device dialogue for the ControlAir MOS Video Server.

OVERDRIVE 11 TO V12 – NOVEMBER 2012

DUAL SWITCHER REDUNDANCY

This feature introduces support for the control and 'hot-swap' of 2 physical Switchers. This is used in combination with the OverDrive 'dual server' redundancy feature and allows the user to eliminate the Switcher as a single point of failure. Should the 'primary' Switcher fail (or some element of the switcher and its connected equipment should fail) then OverDrive can cleanly swap to the 'secondary' Switcher which it will have kept aligned with the original primary Switcher.

Each Switcher must be configured identically and have access to an equivalent set of peripheral devices and media, to ensure continued correct operation of the rundown.

The user can choose to fully duplicate or fully share the peripheral equipment, but in the case of 'fully shared' devices the user is responsible for 'switching' this equipment from one Switcher to the other using some form of A/B Switch.

Similarly, it is also the users' responsibility to arrange for the downstream broadcast devices to select the output/s from the appropriate Switcher when such a switchover is performed.

AUDIO FADER MODULE SUPPORT

Support for the new Ross Vision 'Audio Fader' module - introduced with release 15.0a of the Vision Switcher.

When using the OverDrive DirectControl application in audio mode, the touch screen audio faders will now control or follow the physical audio faders of the Audio Fader Module. This provides for a convenient and enhanced user experience for OverDrive operators needing to make quick changes to audio levels.

CUSTOM CONTROL COMMANDS

This new feature allows the specification of a custom control 'command' on the Switcher which can be sent to OverDrive to be interpreted and actioned in RundownControl. There are two types of commands that can be specified 'predefined' and 'assignable'. There are 8 'predefined' commands (such as 'Prepare Next') that can be selected on the Switcher, along with many 'numbered' assignable commands - i.e. 107. The assignable 'numbered' commands need to be mapped on OverDrive to define how they will be interpreted.

These commands can be attached to Switcher 'Custom Controls' (CC) so that when that CC is executed, the command in question will be sent as a message to OverDrive RundownControl. This functionality can now be used in place of GPI's, thereby saving on valuable and limited GPI's whilst also providing a clearer view of what action is being carried out.

½ MLE SUPPORT

Half MLE support on the ROSS Switcher enables users to have an additional PGM MLE and Mix DSKs. These additional resources were previously not available to OverDrive but are now introduced to OverDrive 12.0.0.

All mix and multi DSKs are shown to the user as external DSKs in the 'Program Keyers area' of RundownControl and in the 'DSK area' of DirectControl.

FLOATING DVE SUPPORT

Prior to OverDrive 12.0.0 the Switcher would automatically change the DVE floating mode to 'fixed' as soon as OverDrive was connected. This restricts some power users from doing complex Squeeze and Tease effects and DVE transitions using additional DVE channels from the adjacent MLE.

Now, in OverDrive 12.0.0, the DVE floating mode can remain enabled when working with OverDrive. Although this feature unlocks the potential to do many more spectacular effects on an OverDrive system the user needs to be aware and calculate the appropriate allocation of DVE resources when building a show from OverDrive. Failure to do so might result in OverDrive being unable to prepare the next shot due to a lack of resources.

OVERDRIVE 10.0.7 – OCTOBER 2012

RUNDOWNCONTROL ON AIR SHOTS

Corrective content introduced to ensure the on air and prepared status is correctly represented when an item is added or removed from a story above the on-air shot.

OVERDRIVE 10.0.6 – SEPTEMBER 2012

CROSSPOINT AND CLIP INFORMATION PERSISTENCE

Crosspoint and clip information is retained when a shot is added as a quick recall or an incomplete shot is added to a Live rundown. The clip information is retained when RundownControl transitions off the template.

ELIMINATE POPUP ERROR FOR EMPTY LIVE RUNDOWN

Removed a popup error when inserting the first shot for a new Live rundown.

OVERDRIVE 10.0.5 – JUNE 2012

SUPPORT FOR LARGE MOS MESSAGES

This fix addresses the timeout events that previously existed between the OverDrive MOS Gateway and the NRCS. It was only realized when very large MOS messages were being received, usually a roCreate or roList for a very large rundown.

ACTIVEX PLUG-IN KEYWORD SEARCH

Plug-in script improvements to ensure keyword search works consistently.

CUE IN ADVANCE

Corrected a race condition which could lead to a clip being aired from further down in the rundown.

OVERDRIVE 10.0.4 – MAY 2012

DISABLED CAMERA STATE

Added additional camera state checks in RundownControl to ensure that a disabled camera does not recall shot information when it transitions to on air.

CLIP DURATION AUDIT CORRECTION

Added robustness content to make the clip duration request overflow work to its maximum of 200 items.

TAKE AND PREP NEXT

Eliminate a race condition in RundownControl associated with GPI triggered events. RundownControl will now queue incoming GPI events and ensure processing.

INEWS MOVE MULTIPLE CORRECTION

Correction in the handling of the MOS roStoryMoveMultiple message generated when iNEWS users drag and drop a set of stories within the NRCS client. This fix keeps the RundownControl table aligned with the running order in iNEWS.

ELIMINATE UNEXPECTED CUSTOM CONTROL POPUP

Inserted a fix to ensure that the Custom Control popup warning does not appear in RundownControl when it is running in Monitor Mode, unless that instance of RundownControl performed a Custom Control Hot Key stroke. The monitoring RundownControl had been reacting to hot keys coming in when DirectControl had focus.

LOGGING HOT KEY IN RUNDOWNCONTROL

Introduced a troubleshooting enhancement where RundownControl hot keystrokes are now logged. The additional information will help in the analysis of future field issues.

OVERDRIVE 10 TO V11 – JANUARY 2012**UTF-8**

With this feature OverDrive now supports UTF-8 Unicode character sets in conjunction with Switcher and Device protocols. It is now possible to accept, process, and display UTF-8 characters on the OverDrive user interface. Data may be entered directly on the OverDrive GUI or received from the NCS via MOS. More specifically, OverDrive has now been tested and qualified to support Traditional Chinese character sets along with the ENPS NCS.

SERVER SYNC ROLL

This feature applies to Video Servers (both MOS and non-MOS) and provides the ability to define pairs of 'redundant' Video Server channels which can then be loaded and synchronously rolled these channels automatically. In the event of Video Server failure, or some problem loading a clip to a particular channel, this

provides the ability to quickly switch between the primary and redundant channel.

DEKO CG-TIMING

OverDrive release 11 now extends the CG-Timing feature to support DEKO MOS CG servers. During creation of a rundown in an NRCS, such as ENPS or iNEWS, a DEKO MOS CG element can be placed in the rundown and the DEKO plugin can now be used to specify the 'time in' and 'time out' or 'duration' for the CG element. This timing info will be passed via the MOS XML protocol and will be displayed and used by OverDrive RundownControl.

OVERDRIVE 9.3 TO V10 – SEPTEMBER 2011

POSTGRESQL DATABASE

Architectural enhancements have allowed OverDrive to replace its internal database with PostgreSQL “the worlds most advanced open source database”. This new database increases reliability, speed and adds capabilities never before possible.

USER PROFILES

Building on the flexibility of GlobalView: create multiple profiles that include screen layouts, button assignments and hotkeys for every user, show or use of the system. Log in with your profile to experience a system tailored to you.

QUICKTURN NEW MEDIA WORKFLOW

Take your productions to the web with QuickTurn – a new technology that allows you to manage and create alternately formatted content as the rundown plays. QuickTurn provides interfaces to supported web encoders to record show segments in real-time, using tags specified within the newsroom or Live rundown. Support for Stream The World and DigitalRapids media encoders is included.

CUSTOM CONTROL TRANSITION TYPE

Tighten up the timing of animated transitions using the new Custom Control transition type. Create a custom control that loads and runs the effect, include a transition on the switcher then attach it to one of the transition buttons within RundownControl.

GLOBALVIEW SERVER CLIP STATUS ENHANCEMENTS

Many UI enhancements have been included to ensure the visibility of clip status, duration, warnings and errors do not get lost as the rundown is advanced. Status continues to be shown when a shot is prepared or on-air.

AUTO ADVANCE CG FOR CHYRON

This new feature extends the capabilities of auto advance integration to the Chyron CG family. Use the Lyric plug-in to attach timing information to graphics and have OverDrive advance automatically.

NEW INTERFACES

The following new interfaces have been integrated into OverDrive 10.0.0:

- Autocue QNews Newsroom
- Chyron XClyps Server MOS
- Nexio Server MOS

OVERDRIVE 8.1.1 TO V9.3

WINDOWS 7 AND SERVER 2008 SUPPORT

Use Windows 7 or Windows Server 2008 to OverDrive your facility! All versions of these operating systems are now fully supported and can be used to host OverDrive clients or newsroom systems running the OverDrive ActiveX plugin (please refer to your newsroom system vendor for a list of supported OS version for the newsroom client itself).

GLOBALVIEW GUI

The new GlobalView GUI leverages the extra display area of widescreen monitors by offering the user customizable views suited to their operational and production requirements. Each RundownControl module can be resized or moved – even to a second display – creating a work environment with the perfect mix of rundown-based and ‘on-the-fly’ tools.

GlobalView allows the operator to add columns displaying specific device channels to the rundown. This feature provides a ‘global view’ of all devices under control showing media and position data as well as status.

NKEYERS

The NKeyer feature offers the user control of all 4 keyers per switcher MLE, in addition to keyers associated with the MultiKeyer option. Keyer Link/Latch

operation is available for each keyer allowing the operator to bring any key on with the shot transition.

TIMER ENHANCEMENTS

Additional timer capabilities have been added to allow automatic execution of custom controls when timers reach specified values. Use these timers to trigger external events, roll music, or use your imagination to come up with other purposes. There are 6 timers and each timer can have up to 6 events added.

NRCS CG TIMING

OverDrive 9 supports CG timing information from the ENPS ctrl 'G' tool. This feature allows automated CG playback from timing coded into the NRCS. iNEWS and NRCS ActiveX support are planned to follow in later releases.

CHANNELIZED CG COMMANDS

This new feature extends the capabilities of OverDrive CG MOS integration by exposing control of required template animation and channel management settings for supported graphic systems.

NEW DIRECTCONTROL CUTBUS

The Switcher CutBus in DirectControl has been fully redesigned to provide additional and quicker access to switcher crosspoints and all 4 MLE keyers plus DSK. Color coding has been added to aid the APC operator in quickly determining the status of all switcher busses.

INSCRIBER COMPOUND TEMPLATE SUPPORT

All restrictions removed – support for any number, length and language of tags has been added. New capabilities have been added to the Inscribe character generator interface that allows the use of compound and relocatable templates.

ICON THEME PACKS

Introducing Icon Theme Packs to OverDrive, install custom themed icons for your installation today! Contact your sales coordinator for details.

AUTO ADVANCE CG

Usable with XPression and Inscribe CG device families, Time In and Time Out values entered from the respective CG plugin can now be tied to autorun custom controls. This new capability allows production to set times for graphics to take, advance, and take out graphic objects automatically!

NEW INTERFACES

The following new interfaces have been integrated into OverDrive 9.2.0:

- Dalet Newsroom
- XPression, Miranda, ORAD and Pixel Power CG MOS
- Quantel MOS
- Dalet NRCS
- Vinten PTZ control
- Inscribe CG MOS enhancements

OVERDRIVE 8.0 TO V8.1.1

ROSS XPRESSION MOS

Take control of your XPression CG using the new MOS Interface with OverDrive. Add XPression MOS elements to any newsroom playlist and have them interpreted automatically into rundown items for playback using RundownControl.

MIRANDA VERTIGO MOS

Take control of your Miranda Vertigo CG using the new MOS Interface with OverDrive. Add Vertigo MOS elements to any newsroom playlist and have them interpreted automatically into rundown items for playback using RundownControl.

ORAD MAESTRO MOS

Take control of your ORAD Maestro CG using the new MOS Interface with OverDrive. Add Maestro MOS elements to any newsroom playlist and have them interpreted automatically into rundown items for playback using RundownControl.

CG DISPLAY ENHANCEMENTS

Get the real picture with detailed graphic information (as provided by your MOS CG vendor) now displayed for each graphic added to a rundown.

TIMER ENHANCEMENTS

A better way of updating clip time information and relating them to on-screen timers has been provided.

DALET NEWSROOM

Another newsroom has been added – enjoy the full capability of our MOS interface within the Dalet newsroom environment. A full ActiveX control is provided to add elements to playlists, and a full MOS connection is supported to allow for updates and changes being made in real-time.

OVERDRIVE 7.0 TO V8.0.3

BACKUP REDESIGN

Correct problems with the backup system to make it more user-friendly and switch faster. Changes will allow correct use of backup modes, and not require manual copying of data between primary and backup. Support for both client-on-server and true client/server deployments included!

CODE CLEANUP AND BEST PRACTICES

We've cleaned up our code based on findings from new development tools (Coverity, jConsole, etc.) and customer investigations, as well as implemented a process called "Best Practices" that ensures future code is written in the best possible form.

TOOL CLEANUP

Internal versions of tools that are used by the OverDrive system have been evaluated and upgraded where appropriate – we are now based on Java 1.6!

SIDECAR LOGGING ENHANCEMENTS

Logs have been improved within the sidecar client application, making troubleshooting easier and faster.

CUE IN ADVANCE CLEANUP

Several efficiency changes have been made to the "Cue in Advance" feature as part of the version 8 developments, making it perform more reliably and quicker.

MULTIPLE RUNDOWN BACKEND

The MOS Gateway is smarter, and now tracks multiple rundowns at the same time sent from the newsroom. This corrects several messaging issues when multiple rundowns are made active at the same time and allows faster rundown loading.

MOS MESSAGE THREADS

Several adjustments have been made to MOS message processing to remove a condition that would allow some messages to be processed out of order. The system now processes one message at a time.

OVERDRIVE 6.1 TO V7.0

NEWSROOM COMPUTER SYSTEM FUNCTIONALITY

ACTIVEX GRAPHICS

Nu-look graphics and color schemes have been added to make the visual experience more appealing!

CONTROLAIR

Eliminate cut & paste errors by having OverDrive automatically fill templates with clip information added to iNEWS rundowns using AVIDs ControlAir automation-assist program.

CHYRON MOS

Add Chyron graphic elements into the rundown using Chyron's LUCY plug-in, and control play out using RundownControl.

BUGS ADDRESSED

Corrected a bug that may have caused duplicate rundown items when using the iNEWS NRCS.

Changed MOS message handling to eliminate one method of having rundown items appear out of order when using the ENPS NRCS.

Corrected several inconsistencies with CG clip data in RundownControl and ActiveX.

OVERDRIVE SERVER FUNCTIONALITY

BUGS ADDRESSED

Updated backup mode options to make it more clear what action the option would perform when selected.

Added a progress bar to show progress towards entering backup mode.

Corrected an issue that may have resulted in errors when re-launching the Overdrive server.

RUNDOWNCONTROL FUNCTIONALITY

CROSSPOINT BUS SELECT

Eliminate hundreds of templates by selecting crosspoints directly within your templates using the new crosspoint device! The crosspoint device can be added to any bus, and button selection performed either in the RundownControl, or within in the plug-in.

STILL STORE DEVICE

Take control of your switcher's internal MLE and Global stores and add effects to your templates using the new Still Store device. The device manages still and animation loading as well as resource selection.

TEMPLATE FILTERING

Bring organization back into your newsroom by creating filters for your templates. Keywords can be added to any template, and filters added to easily display only the set of templates desired at any given time.

PREPARED SHOT CUSTOM CONTROLS

Custom controls that have been added to a shot are now visible when that shot is prepared. Relative customs that are run while from the prepared show now run against the switcher's Preset bus, instead of the Program bus.

COLUMN SHADING

Added shading the first rundown column to more clearly display elements that belonged to the same shot.

BUGS ADDRESSED

Changed the handling of devices and device crosspoints to increase stability and keep assigned crosspoints from becoming unassigned.
Sped up TemplateEditor launch.

SIDECAR FUNCTIONALITY**SIDECAR MENU**

A brand-new menu system has been added to the sidecar, set display options, change button functions, and peruse diagnostic results all on the sidecar unit itself.

BUGS ADDRESSED

Modified the touch controls on the audio faders to make controls more responsive.

Changed message handling to simplify startup and connection procedures.
Corrected data handling for button assignments that were resulting in buttons becoming grayed out when the button was valid.

DIRECTCONTROL FUNCTIONALITY

BUG ADDRESSED

Changed mouse and keyboard event handlers to be more consistent, buttons should now perform their actions in the same way across the application.

OVERDRIVE 5.01 TO V6.1

NEWSROOM COMPUTER SYSTEM FUNCTIONALITY

ACTIVEX

A new drop-down window has been added to allow the user to quick select templates.

OVERDRIVE SERVER FUNCTIONALITY

LICENSING

The OverDrive server now requires licenses to be installed to allow RundownControl and DirectControl clients to connect. Keys have been made independent of the local time on the OverDrive PC. Please contact technical support to get your new license keys!

NEW SERVER HARDWARE

A rack-mount server option is now available and is equipped to allow multiple RundownControl and DirectControl clients to connect from other workstations or run them locally.

BACKUP MODE

Updates have been made to the operation of backup mode, and better indications have been added to allow the user to better monitor the status of getting into and out of backup mode. Backup files have also been split to allow each PC to retain its own settings while still backing up global preferences. Clients can now easily choose which server to connect to.

RUNDOWNCONTROL FUNCTIONALITY

STICKY QUICKRECALL

QuickRecalls now stick to the rundown where they have been added and can now be saved as part of that rundown or deleted when the rundown is closed.

PREPARED SHOT CUSTOM CONTROLS

Custom controls that have been added to a shot are now visible when that shot is prepared. Please note that the customs are the same and relative customs continue to operate on the Program bus when run from the Prepared Shot Custom Control buttons.

LINK/LATCH DSK

Attach a DSK to any transition! Link any DSK to background transitions.

RUNDOWN TIMERS

New timer options have been added, and the number of timers has been expanded to 6.

SINGLE-LINE CHARACTER GENERATOR DISPLAY

Options have been added to display MOS CG elements as a single line, allowing more elements within the rundown to be displayed. This option is independent of the single-line display option for OverDrive elements.

DEVICE BASED AUDIO

Hear your servers roar by attaching the audio for them directly to your switcher templates – no more guessing which device channel OverDrive is going to choose!

AUDIO FADE RATES

Change the audio fade rate that the system uses on a template-by-template basis or lock it to the video transition rate to enhance your audio presentation!

SYSTEM MONITOR STATUS BAR

The System Monitor display area has been removed, and a single-line status bar has been added to capture information previously displayed in the system monitor area (and so much more).

DEVICE DISABLE

Disable control of any camera, audio or server device to allow manual operation at any time.

ROUTER MNEMONICS

Select router sources via their mnemonic name instead of number, support for routers that send this information is here.

MOS SERVER SUPPORT – NEWSQ, BITCENTRAL AND GALLERY/SIENNA

Support for MOS objects added via the NewsQ or Gallery/Sienna plug-ins has been added, along with support for BitCentral objects. OverDrive now extracts clip information from these objects and matches these clips with OverDrive elements that include MOS Server devices.

CLIP CUE STATUS

Status is displayed for server clips after a cue is attempted – the reason for a cue failure is displayed if possible, or a timeout if no status is received.

EXPANDED MOS CG SUPPORT

The MOS CG interface has been expanded to include items added via the Deko, Inscribe and Chyron MOS plug-ins. It is also now embed CG items added to ENPS via the CG tool (Ctrl-G) within the Overdrive rundown.

RAPIDRESTORE FUNCTIONALITY

This tool has been completely redesigned, and now operates in a Wizard-like fashion with multiple backup and restore options. It is now possible to create backups from within the OverDrive server itself, without shutting the program down.

DIRECTCONTROL FUNCTIONALITY

A/B TOGGLE FOR WHEATSTONE

Change the displayed buttons on the audio control screen to toggle between the A and B levels on Wheatstone audio faders.

AUDIO FADE RATES

Change the audio fade rate that the system uses or set it to the video transition rate.

OVERDRIVE 4.01 TO V5.01

OVERDRIVE MOS GATEWAY FUNCTIONALITY

The MOS Gateway functionality has been expanded. All newsrooms now communicate through the MOS Gateway, which sends both News and Live rundown information to multiple instances of RundownControl.

NEWSROOM COMPUTER SYSTEM FUNCTIONALITY

NEWSTAR SYSTEM

Create, edit and playback rundowns using the Newstar System. Custom widget allows publication of template information to the MOS Gateway, and updates via file export. Columns containing template number and clip information can be added to any lineup.

ACTIVEX

A new drop-down window has been added to allow the user to quick select templates.

OVERDRIVE SERVER FUNCTIONALITY

BACKUP MODE

Updates have been made to the Backup Mode setup screen to make things more understandable.

RUNDOWNCONTROL FUNCTIONALITY

SAVE AS

It is now possible to save your newsroom rundowns as light rundowns. Store MOS rundowns as OverDrive rundowns for easier access in the future. News text and other MOS information are not saved when converting MOS rundowns. Use Save As to save rundown fragments for later editing or to append newsroom rundowns.

CUE SHOTS IN ADVANCE

Regain visibility of your servers using the Cue Shots in Advance feature! Overdrive now allows devices to be prepared as soon as possible, and on as many channels as possible. Multiple channels of server can now be prepared and ready to go simultaneously. This feature is optional; the functionality can be disabled if desired.

MOS CG INTEGRATION

Embed graphic elements in the rundown, generated using native MOS tools from VizRT or Deko, and perform playback seamlessly with Overdrive elements.

OPTIONS MENU REDESIGN

The options dialog has been redesigned to allow easier access to settings, and the tabbed view takes less screen space to display.

RAPIDRESTORE

The tool has been updated to restore settings and rundowns from versions 2.01, 3.01, 3.02, and 4.01 in addition to backup/restore of version 5.00 files and database.

DIRECTCONTROL FUNCTIONALITY**ENHANCED AUDIO INTERFACE**

Modifications to the audio interface have been made to make many commonly used controls more accessible and a status bar has been added to provide more feedback.

AUDIO MUTE

The ability to mute and un-mute audio channels has been added to all supported audio mixers.

OVERDRIVE 3.02 TO V4.01**SWITCHER FUNCTIONALITY****MD AND MD-X SUPPORT**

Support has been added for Synergy MD and MD-X switchers. The following switchers may be controlled using the OverDrive system: Synergy 2 MD, Synergy 2 MD-X, Synergy 3 MD-X, Synergy4 MD-X. All control features are available whether connecting to a multi definition or standard definition switcher.

NEWSROOM COMPUTER SYSTEM FUNCTIONALITY**AUTOCUE Q-NEWS SYSTEM**

Create, edit and playback rundowns using the Autocue Q-News System. Custom plug-in allows addition of template information to queue elements and publish via the Q-Series MOS Export Server and OverDrive MOS Gateway.

OVERDRIVE SERVER FUNCTIONALITY**BACKUP MODE**

A new mode to automatically back up system data has been added. Backup mode provides a link between a primary and redundant system and allows template, shot and rundown information to be continuously backed up between the two systems.

Note

The backup and primary systems must be on the same network for backup functions to operate.

NETWORK CONFIGURATION

Tools have been added to the server to configure your network connection, used when connecting to a Synergy MD or MD-X switcher. Tabs have been added to allow setting of IP properties of the switcher, and to set serial or Ethernet control.

RUNDOWNCONTROL FUNCTIONALITY**SAVE AS**

It is now possible to save your newsroom rundowns as light rundowns. Store MOS rundowns as OverDrive rundowns for easier access in the future. News text and other MOS information are not saved when converting MOS rundowns.

MORE QUICK RECALLS AND CUSTOMS

The number of available Quick Recall and assignable Custom Control buttons have been increased.

MORE CUSTOM CONTROLS FOR ON-AIR SHOT EVENTS

The number of available Shot Event buttons has been increased from 4 to 6.

SYSTEM MONITOR WINDOW

A new window has been added to contain system information; this replaces the pop-up messages and provides a central spot for collecting important messages.

RAPIDRESTORE FUNCTIONALITY

The tool has been updated to restore settings and rundowns from versions 2.01, 3.01 and 3.02, in addition to backup/restore of version 4.01 files and database.

DIRECTCONTROL FUNCTIONALITY**KEYSTROKE HANDLING IMPROVEMENT**

Keyboard enhancements have been added to allow keystrokes to be passed through to the RundownControl.

OVERDRIVE 2.01 TO V3.01**NEWSROOM COMPUTER SYSTEM FUNCTIONALITY**

AUDIO/TRANSITION/CUSTOM CONTROLS IN SHOT

Used for reducing the number of templates in the system! Add audio information, transition information and custom control information to each shot as it is created. Controls in the newsroom plug-in have been modified to allow editing shot data to customize each shot from the template.

CLIP EDITING ENHANCEMENTS

Clip editing has been modified to allow information for video servers, routers, robotic cameras, CGs, audio servers and Aux busses to be entered. Devices have been sorted onto two screens to organize layouts.

RUNDOWNCONTROL FUNCTIONALITY**AUDIO/TRANSITION/CUSTOM CONTROLS IN SHOT**

Used for reducing the number of templates in the system! Specify the audio channels and levels to be used in each shot, along with which custom controls (along with auto-run settings) and transitions to use. Every shot is loosely based on a template, and can be edited independently for each QuickRecall button, or placed in a rundown.

NEW DEVICES

New types of devices have been added. These devices are connected to the Synergy for control but not attached to a video input. Details for each device type and clip format can be found below.

AUDIO SERVER

Server clips for Digicarts has been added. Clips are specified using drive, folder and cut numbers. It is possible to add only the drive and folder as a default for future cut selection.

ROUTER, NO XPT

Entering the level, source and destination specifies router clips. Multiple routers can be added to each shot to allow multiple changes.

AUX BUS

Specify the bus number and the input to be assigned to any Aux bus. Multiple aux busses can be added to each shot to allow multiple changes.

STORY TEXT

View story text published from the newsroom system. A new view has been added to display the story text published with every rundown from the newsroom. The view will automatically follow the script as the rundown is taken.

TEMPLATEEDITOR FUNCTIONALITY

FIXED-MLE TEMPLATES

Enhancements have been made to allow templates to be created against a specific MLE. These fixed-MLE templates allow direct control over physical MLEs to expand production control beyond the newsroom. Configure the switcher to specify Fixed-MLE and Floating-MLE resources. Mix both fixed and floating templates within a rundown to create different effects.

RAPIDRESTORE FUNCTIONALITY

The tool has been updated to restore files from version 2.01, in addition to backup/restore of version 3.01 files and database.

DIRECTCONTROL FUNCTIONALITY

AUDIO GUI CHANGES

Several enhancements have been made to the look and feel of the audio portion of the application, allowing it to be used both through the touch screen interface and the mouse. QuickRecall buttons have been added that can be assigned individual channels or audio scenes to change controlled channels at the touch of a button. Custom controls are available from the audio screen to enhance control over audio sources. Multiple channels can be selected and controlled using the mouse wheel.

VIDEO SERVER GUI

Version 3 now features a video server control GUI. This GUI allows direct control of any video server connected to the switcher. Clip cue, play, pause, frame forward and back, fast forward and rewind are controlled by the GUI. The loaded clip and current timecode are displayed. Any clip can be assigned to a Quick Recall button and given an icon to represent it for one touch playback.

OVERDRIVE 1.03 TO V2.0

NEWSROOM COMPUTER SYSTEM FUNCTIONALITY

I-NEWS INTERFACE

The MOS interface to I-NEWS allows rundowns created in the NCS to be used in OverDrive. The interface allows for real-time changes in the NCS rundown to appear. Included with the interface is an Active X plug-in for each NCS desktop. The I-NEWS MOS gateway option from AVID is required for this interface.

PLAYOUT STATUS FOR ENPS AND I-NEWS

Playout status feedback can now be sent via the MOS interface from RundownControl to the I-NEWS and ENPS NCS. On-air and prepared shots status is now visible to all newsroom clients.

MULTIPLE SHOTS PER STORY

Used for reducing the number of lines in a rundown! It is possible to add more than one template to each story/segment within I-NEWS or ENPS. Templates will be displayed in the proper order in RundownControl.

Note

Any existing Active X controls need to be re-installed before using this feature.

RUNDOWNCONTROL FUNCTIONALITY

USE PROGRAM MLE AS EFFECTS MLE MODE

This mode allows the use of the Program MLE to prepare shots. When in this mode, the Program MLE's PST bug, DSK1 and DSK2 will be used to prepare shots. The mode can be selected from the Tools, Options dialog.

SYNERGY 2 SUPPORT

When connected to a Synergy 2, the Use Program MLE as Effects MLE mode is always active.

POP UP ERROR MESSAGES

When an error occurs that results in a pop-up warning being displayed on Synergy, the pop-up message will also appear in the RundownControl.

ENHANCED CUSTOM CONTROL SUPPORT

Custom Controls created in Synergy are now automatically updated and available for use in the TemplateEditor and RundownControl. Custom Controls are identified by name making it easier for the user to manage this powerful tool. All existing Custom Control templates will be replaced.

MINI-TIMELINES

Allows custom controls to auto-run when a shot is taken to air. A user defined delay allows custom control execution to be staggered to create powerful effects.

SYNERGY GPI CONTROL

The ability to trigger events within RundownControl from GPIs has been added. Each GPI can be configured to start, stop or transition through a rundown. GPIs must be enabled on the Synergy switcher for this feature to function.

ICON CAPTURE

Using the capture tool, it is possible to capture an image from the on-air shot and use it as a picture icon in the Switcher templates and on Quick Recall buttons. All images captured are placed in a sub-folder that can be selected from the image chooser dialog.

NEW ICONS

There have been several new icons added to the icon library.

FADE TO BLACK

It is now possible to configure any of the transition buttons to perform a fade or cut to black. Right click on the transition button to open the configuration screen and select the Fade To Black transition type. The fade rate can be configured in the same spot. Selecting a fade rate of 0 will result in a Cut type transition instead of a Dissolve.

DEVICE CLIP ENTRY

Specific clip formats have been added to support each type of controlled device. Details for each device type and clip format can be found below.

ROUTER CLIP ENTRY

Router clips can be entered using Level and Input values. Router switching will occur when a shot using the router is prepared.

CG CLIP ENTRY

CG clips are entered using a folder/file/tag format. CGs clips will load the appropriate labels from the CG once a valid folder and file are entered. It is possible to enter a blank or re-use the existing text in the tag already on the CG.

VTR CLIP ENTRY

VTR clips are now entered using timecode for in-time, out-time and duration. Any two of the three entries are required while the third is calculated. VTRs will shuttle to the correct in-time when a shot using them is prepared. VTRs will automatically stop playing after the duration has passed.

SERVER CLIP NAMES

Server clip names are now available when entering clip information for shots using video servers. A list of clips on each video server appears in a drop-down in the Edit Shot dialog. New clips added to the server are immediately available. It is also possible to manually refresh the clip list using the “Reload Devices” button. When this button is pressed, the system will reload all clip information for all devices used in the selected shot. A progress dialog will appear while the clip list is being refreshed.

SINGLE CHANNEL DEVICES

Back to back shots using devices are now available. Selecting the “Back To Back” option when creating the device in the TemplateEditor allows this mode of operation. These devices will have clips cued when the shots using them are taken to air, rather than when they are prepared.

MULTIPLE TRANSITION HANDLING

The system will now ignore “Take” and “Take and Prepare” commands while a transition is in progress. It will also queue DSK auto trans commands when they cannot currently be performed. This prevents accidentally advancing the rundown.

TEMPLATEEDITOR FUNCTIONALITY

AUDIO/VIDEO ONLY TEMPLATES

Enhancements have been made to allow templates to be created containing video elements, audio elements, or both.

AUDIO FOLLOW VIDEO (BOTH)

Templates with both audio and video components will result in audio and video changes when prepared. Audio channels which are not associated with the video inputs involved in the shot can be explicitly added.

AUDIO ONLY

Templates with audio only components will result in no video change when the shot is prepared or taken. Audio channels must be added explicitly.

VIDEO ONLY

Templates with video only components will result in no audio change when the shot is prepared or taken. Audio channels may be explicitly added, in which case these channels only will be modified to the specified levels.

BACK TO BACK

It is possible to assign any device to be usable back to back. This means that Overdrive will select the first on-air crosspoint for the device when preparing it. No warnings will be displayed when a back to back devices are on-air and used in the next shot.

RAPIDRESTORE FUNCTIONALITY

RapidRestore is a new tool for quickly backing up and restoring templates, client configuration, and rundowns. The user can select the target directory and files to backup/restore.

DIRECTCONTROL FUNCTIONALITY**AUDIO UI CHANGES**

Several enhancements have been made to the look and feel of the audio portion of the application, allowing it to be used using the touch screen interface.

ROBOTIC CAMERA GUI

Version 2 now features a robotic camera GUI. This GUI allows direct control of any camera connection to the switcher. Pan/tilt, zoom, elevator, focus and iris control are adjustable directly from the GUI. Camera presets can be saved and recalled for each camera. Each camera pre-set can be assigned to a Quick Recall button and given an icon to represent it.

CAPRICA VERSION HISTORY

CAPRICA 8.0C WITH COCKPIT 2.0.1– DECEMBER 20, 2021

BUG FIXES

- Fixed an issue where shot box settings were not loaded properly. (CAP-3185)

NOTE: Cockpit 2.0.1 must be installed prior to Caprica 8.0c for this fix.

CAPRICA 8.0B – DECEMBER 2, 2021

BUG FIXES

- Fixed a timing issue where on rare occasions the wrong clip would play in Ovation video servers. (CAP-3133)
- Fixed an issue where Caprica could lock up while retrieving router destination names that use the GVG NP router protocol. (CAP-3008)
- Fixed an issue where Caprica would disconnect from the switcher due to logging operations. Users can now fine tune log levels using the “Caprica System” panel in the Ross Dashboard client. (CAP-2670, CAP-3020)
- Fixed an issue where Furio camera moves would be delayed by several seconds. This could happen in cases where the camera move was executed by a Custom Control during a transition, but the move was NOT prepared first. (CAP-3025)
- Fixed an issue where executing “Unmute All” from Direct Control was not unmuting the channels on the Lawo Ember+ audio mixer. (CAP-3011)

IMPROVEMENTS

- Caprica 8.0b now supports direct connections to the TuningS controller for Panasonic cameras. This bypasses the RP150 controller. (CAP-3081)

UPGRADE CONSIDERATIONS

- Connections to Carbonite Ultra switchers running software version 6.6 or greater require Caprica v8.0b.

CAPRICA 8 – SEPTEMBER 30, 2021

WHAT'S NEW

- Caprica now runs on 64-bit Linux
- Added support for Ultrix Carbonite.
- Added support for a WebSocket Connection to OverDrive
- New CustomControl Command for Video Servers:
 - Bus based commands for Loop On, Loop Off
- CustomControls now include Memory Names
- The Caprica Test/Internal Switcher can now set the frame rate in order to accommodate rates other than 60 fps, e.g. 1080p50
- Disksets are now replicated to redundant Caprica servers in a cluster
- Upgraded Cockpit to version 2.0.0

UPGRADE CONSIDERATIONS

- An upgrade to Caprica version 8.0 **requires** an update to the OS. A new Hyper-V image or OVA will be provided prior to the upgrade. This new OS (Amazon Linux 2) provides additional security and performance.

BEHAVIOR CHANGES

- As part of our ongoing efforts to provide secure products, several changes have been made to the Caprica installation process:
 - The main user account will not have a default password; instead, the user will be prompted for one during installation
 - There will no longer be an automatically generated account for Ross Technical Support; one must be created from within Cockpit (*See OverDrive Support Access Waiver for more information*)

BUGS ADDRESSED

- Fixed a JavaScript error in Cockpit resulting in missing Caprica Disksets (CAP-2762)
- Fixed a problem where the last Diskset could not be deleted (CAP-2811)
- Fixed an issue with no default port set for XPression connection in DashBoard. (CAP-2826)
- Fixed bug in the Ultra driver supporting media wipes and Carbonite CCs. (CAP-2869)
- Fixed issue with the Ultrix Acuity driver where Keys 5 & 6 were appearing as Virtual Keys in CC Menus. (CAP-2877)
- Fixed an issue where Sidestick settings were not saved/recalled with disk set. (CAP-2980)
- Fixed an issue where Virtual Key buttons in Direct Control were flashing when playing multi-clip shots. (CAP-2996)

CAPRICA 7.2N – FEBRUARY 1, 2022

BUG FIXES

- The Caprica Avid Orad driver now supports the 'Display Mode' flag. (CAP-3187)
- Fixed an issue where the connection to Panasonic cameras would become disconnected after long periods of time (24 hours or so). (CAP-3241)
- Fixed an issue where Caprica did not support "Default Show Names" for cameras such as Furio. (CAP-3270)
- Fixed an issue where Caprica was not homing the Track axis after rebooting the Furio camera. (CAP-3186)
- Fixed an issue where executing "Unmute All" from Direct Control was not unmuting the channels on the Lawo Powercore audio mixer. (CAP-3011)

- Fixed an issue where the Caprica AMP driver would not communicate with the video server after first initialization. (CAP-3149)

CAPRICA 7.2M – DECEMBER 2, 2021

BUG FIXES

- Fixed a timing issue where on rare occasions the wrong clip would play in Ovation video servers. (CAP-3133)

IMPROVEMENTS

- Caprica 7.2m now supports direct connections to the TuningS controller for Panasonic cameras. This bypasses the RP150 controller. (CAP-3081)

CAPRICA 7.2L – NOVEMBER 2, 2021

BUG FIXES

- Fixed an issue where Caprica could lock up while retrieving router destination names that use the GVG NP router protocol. (CAP-3008)
- Fixed an issue where Caprica would disconnect from the switcher due to logging operations. Users can now fine tune log levels using the “Caprica System” panel in the Ross Dashboard client. (CAP-2670)
- Fixed an issue where Furio camera moves would be delayed by several seconds. This could happen in cases where the camera move was executed by a Custom Control during a transition, but the move was NOT prepared first. (CAP-3025)
- Fixed an issue where executing “Unmute All” from Direct Control was not unmuting the channels on the Lawo Ember+ audio mixer. (CAP-3011)

CAPRICA 7.2K – SEPTEMBER 08, 2021

BUG FIXES

- Fixed an issue where when the connection to Carbonite and Graphite switchers is reset, the number of MEs and keys is incorrect (CAP-3000)

CAPRICA 7.2J – SEPTEMBER 07, 2021

BUG FIXES

- Added an option to the Ovation driver that, when cueing and playing from OverDrive, prevents incorrect clips from being played (CAP-2997)

CAPRICA 7.2I – AUGUST 31, 2021

BUG FIXES

- Fixed an issue where Tria was not cueing correctly (CAP-2984)

CAPRICA 7.2H – JULY 09, 2021

BUG FIXES

- Added an option to the RAP protocol to auto unmute or not auto unmute audio channels when the audio fader level changes (CAP-2936)
- Fixed an issue with RossTalk not properly sending messages (introduced in 7.2f)

CAPRICA 7.2G – JUNE 25, 2021

BUG FIXES

- Fixed an issue where the cued status of video clips was sometimes incorrect when using the AMP protocol. (OD-17632)
- Fixed an issue with long transitions on Acuity not completing properly. (CAP-2867)
- Fixed an issue using CCs to copy to Virtual Keys on Acuity. (CAP-2934)
- Made improvements to the vertical interrupt handling to fix a rare issue with Custom Control timing. (CAP-2933)

CAPRICA 7.2F WITH COCKPIT 1.3.3 – MAY 04, 2021

BUG FIXES

- Fixed a rare issue where OverDrive could not run a Caprica custom control via ShotBox or RundownControl CC buttons. (CAP-2747)
- Corrected an issue with Panasonic cameras not stopping after releasing the SideStick. (CAP-2797)
- Fixed an issue where the “CG > Profile > Macro” name was not included in the Custom Control Dashboard panel “Parameter” column for the “Profile” Custom Control. (CAP-2799)
- Fixed an issue where in specific upgrade scenarios, the Caprica audio configuration value for “Audio Transition on ME Transition” would reset after a Caprica restart. (CAP-2816)
- Fixed an issue where Caprica could not load and play graphics with Chyron Prime. (CAP-2822)
- Fixed an issue with Caprica Cockpit where disk sets with special characters would not be visible in the Disk Sets view. The user will now be prevented from entering invalid special characters for disk set names. (CAP-2762)

CAPRICA 7.2E – MARCH 26, 2021

BUG FIXES

- Corrected an issue where SideStick and DirectControl were unable to affect the lift on Cambots through Masterpanel (non-Furio driver). (CAP-2770)
- Fixed an issue where Caprica was not interpreting channel numbers correctly on Yamaha DM2000 audio mixers when using vertical pairing. (CAP-2780)

CAPRICA 7.2D – MARCH 22, 2021

BUG FIXES

- Fixed an issue where the Furio driver would continuously crash and respawn over and over. (CAP-2764)
- Fixed an issue where the Caprica Furio driver was not pulling the shot information correctly from the Furio Tabs. Some Furio shots could not be recalled. (CAP-2765)

- Fixed an issue where Caprica was not receiving Furio Shows or Shot Names in Custom Control menus. (CAP-2737)

CAPRICA 7.2C – MARCH 18, 2021

BUG FIXES

- Fixed a timing issue with Sony switchers that caused transition issues. (CAP-2731)

CAPRICA 7.2B – MARCH 2, 2021

BUG FIXES

- Fixed an issue with audio-only transitions on Acuity.
- Caprica now supports variable key counts per ME on Acuity.

CAPRICA 7.2A – FEBRUARY 23, 2021

WHAT'S NEW

- Added support for the new “Ultrix Acuity” switcher in Caprica.

CAPRICA 7.1C – JANUARY 28, 2021

BUGS ADDRESSED

- Fixed an issue where Caprica would crash when Furio shot names exceeded 32 characters. Exceeding the 32-character limit is only possible when the shot name contains special characters.

CAPRICA 7.1B – JANUARY 15, 2021

WHAT'S NEW

- Added an extra option to RAP audio mixer protocol to allow logarithmic fader scaling
- Added an extra option to Yamaha audio mixer protocol to support different PFL encoding

CAPRICA 7.1A – DECEMBER 14, 2020

WHAT'S NEW

- As part of the OverDrive QuickTurn workflow, added support for embedding SCTE-104 baseband markers into a video stream using a Ross Video TES-8643 VANC Processor card.
- Added CUE METADATA and METADATA IMMEDIATE custom controls.
- Added RossTalk support for QuickTurn metadata queries.
- Added support for sending metadata to QuickTurn Metus Ingest.
- Added a new command option for Panasonic Cameras, with options of "Trace Memory", "TechnoPoint" and "Both" to support Panasonic and Tuning S/TechnoPoint camera moves.

BUGS ADDRESSED

- Fixed an issue with incorrect shot recalls on Panasonic RP-150 cameras.
- Fixed an issue with the Lawo Audio Mixer driver where Caprica could not fade a channel that was already fading.

CAPRICA 7.0B – NOVEMBER 17, 2020

BUGS ADDRESSED

- Fixed an issue where Caprica would not connect to some devices with serial connectivity. (Bug Introduced in 6.4a)
- Improved status messaging with K-Frame switchers.

CAPRICA 7.0A – OCTOBER 30, 2020

WHAT'S NEW

- Added new QuickTurn Device and Custom Controls for interfacing with Metus Ingest software. Required for OverDrive v20 QuickTurn feature.
- Added SideSlide diagnostic audio calibration panel to Dashboard.
- Removal of Flex drivers. Replaced with integrated drivers.

CAPRICA 6.4D – SEPTEMBER 15, 2020

BUGS ADDRESSED

- Fixed an initialization issue that prevented SideShot updates (introduced in 6.4a)

CAPRICA 6.4C – SEPTEMBER 11, 2020 (LIMITED)

ENHANCEMENTS

- Added Nexio API support for IN Point, OUT Point and LOOP options.

CAPRICA 6.4B – AUGUST 25, 2020 (LIMITED)

BUGS ADDRESSED

- Fixed an issue with the Tascam driver not cueing and playing clips correctly.
- Fixed an issue where real inputs were mis-identified as virtual inputs.

CAPRICA 6.4A – JUNE 23, 2020 (LIMITED)

WHAT'S NEW

- Ability to set a "Default Show" value for cameras that use the "shot:shot:duration" shot recall format
- Improvements to the AMP and Furio Drivers
- Ability to cue clips by Bus
- Ability to add nicknames to ports in Ports Configuration
- Copy CustomControl menu now remembers the last copied CustomControl
- New RossTalk Command – Recall CAM
- New RossTalk Command – Query CAM
- New CustomControl and RossTalk Command to set/clear Robotic show values

BUGS ADDRESSED

- Corrected an issue where Sony cameras were slow to respond to shot recalls

CAPRICA 6.3G – SEPTEMBER 22, 2020

BUGS ADDRESSED

- Fixed an issue where Caprica was not displaying all KUMO destination and sources.
- Fixed an issue with Sony camera initialization.

CAPRICA 6.3F – AUGUST 23, 2020

BUGS ADDRESSED

- Fixed an issue where when using OverDrive templates with a Utah Router device, not all buses were recalled.
- Fixed an issue where duplicate virtual crosspoints are listed in the device cross point selection dialog.
- Fixed an issue where an OverDrive template will not make the second crosspoint connect on the Grass Valley NV-9000.

CAPRICA 6.3E - JULY 24, 2020

ENHANCEMENT

- Improved TASCAM driver to support most models

CAPRICA 6.3D - JULY 17, 2020

BUGS ADDRESSED

- Fixed an issue where there was a loss of M/E bank resulting in black frames going to air.
- Fixed an issue where alias names are not being respected with Vizrt.

CAPRICA 6.3C - JUNE 29, 2020

BUGS ADDRESSED

- Fixed an issue where Sony camera was slow to respond.

CAPRICA 6.3B – APRIL 21, 2020

WHAT'S NEW

- Improved the use of 'unlock all' on OverDrive startup.

CAPRICA 6.3A – APRIL 16, 2020

WHAT'S NEW

- Ability to lock and unlock audio channels.
- Ability for OverDrive to control devices that are not connected to the switcher using Virtual Inputs.
- Added the following new extended RossTalk commands:
 - SW KEYCUT – perform a cut transition of a keyer on a selected ME
 - AM LOCKALL – lock/unlock all audio channels
 - AM LOCK – lock/unlock audio channels and query lock state
 - AM PGMLVL –set audio mixer levels and query audio levels
- Added an ability to send CUE commands to XPression from Caprica.
- Add channel alias naming into Audio Configuration menu.
- Support for Lawo PowerCore audio mixer (Beta)

BUGS ADDRESSED

- Corrected an issue where direct connected devices are not all visible on switcher device ports.
- Corrected an issue where adding a Recue Clip bus event to a custom control resulted in the wrong data being reported in the Event List Parameter column.
- Corrected an issue where Caprica input names were missing from the CustomControl build page.
- Corrected an issue where the preview of SideShot button text size and colour was not consistently updating.

- Corrected an issue where the audio channel would un-mute when the fader was touched.
- Corrected an issue where Lawo Ember was showing the wrong names for faders.

UPGRADE CONSIDERATIONS

- Users must upgrade to DashBoard 9.0 when they upgrade to Caprica 6.3a.
- When upgrading Graphite to version 3.0, the audio mixer settings in the Device Settings must be changed to version 3.0

CAPRICA 6.2B – FEBRUARY 12, 2020

BUGS ADDRESSED

- Corrected an issue where Sony switchers were not responding properly to trans mode requests.
- Corrected an issue where Lawo Ember was showing wrong names for faders.
- Corrected an issue where audio channel was un-muting when a fader was touched.
- Corrected an issue where input names were missing from CustomControl build page.
- Corrected an issue where preview of side shot button text size and color were not consistently updating.
- Corrected an issue where the re-cue clip bus parameter would report the wrong data.

CAPRICA 6.2A – DECEMBER 12, 2019

ENHANCEMENTS

- Added ability to create up to 16 virtual keyers, that allow for cueing and playing, but do not tie up switcher resources.
- New CustomControl events for Video Server Control that target a specific bus instead of a device.

BUG ADDRESSED

- Corrected an issue where when restarting OverDrive services, DirectControl shows the master fader as muted when it is not.

CAPRICA 6.1A – NOVEMBER 01, 2019

ENHANCEMENTS

- Added support for Acuity switcher.
- Added ability to allow users to build a CustomControl that stops any specific CustomControl from continuing to run.

- Increased support for Panasonic RP150
- RossTalkIn now has been extended to support individual Custom Control events.

BUGS ADDRESSED

- Improved performance with Sony BRC-900.
- Fixed a communication issue with Grass Valley switchers.

CAPRICA 5.4B – SEPTEMBER 06, 2019**ENHANCEMENTS**

- Added the CustomControl Re-Cue video clips for all server types.
- Added Support for Panasonic RP150.
- Created an option for Sony switchers to include frame converters inputs.

CAPRICA 5.4A – JUNE 28, 2019**BUGS ADDRESSED**

- Corrected an issue when selecting Fixed MEs for Key State Copy, only Keys 1 & 2 show as available to copy to/from.
- Corrected an issue where the connection to Graphite causes Media Wipes to not work on the PGM ME.
- Removed excessive logging.
- Corrected an issue where Graphite Media Wipe is not completing when run from Switcher and connected to OverDrive.

CAPRICA 5.3D – JUNE 07, 2019**BUGS ADDRESSED**

- Corrected an issue where the enable/disable of ePCH shotboxes are still functional after port is disabled.
- Corrected an issue where the VIZ Clear Command does not clear channels.

- Corrected an issue where LawoEmber+ could not control the mixer.
- Corrected an issue where aliases aren't making their way through into the display of the CCs.

CAPRICA 5.3C – MAY 3, 2019

ENHANCEMENTS

- Ability to map physical ME to logical MEs for Graphite Switcher (eliminates need for copy-down workflow).
- Caprica Switcher now has 1000 Memories.
- Cuing of an Omneon Video Server clip will fail if the file is still being transferred.
- An Option was added to turn the Auto Un-mute Channel feature ON or OFF for the Wheatstone Audio Mixer.

CAPRICA 5.3B – APRIL 16, 2019

BUG ADDRESSED

- Fixed an issue where Dashboard cannot connect to Caprica and times out on requesting custom control information.

CAPRICA 5.3A – APRIL 05, 2019

ENHANCEMENTS

- Added a new Memory Attributes menu to allow the user to:
 - Rename a memory
 - Attach a Custom Control to a Memory per ME
- Provide support for the Ember+ protocol for the Lawro audio mixers.

BUG ADDRESSED

- Fixed an issue where timers did not work properly when timecode from Nexio was being reported as fields instead of frames.

CAPRICA 5.2F – APRIL 01, 2019

ENHANCEMENT

- Provided an option for sending recall shot up to four times.

CAPRICA 5.2E – MARCH 26, 2019

BUGS ADDRESSED

- fixed an issue where the pre-roll value was incorrectly being applied to certain inputs.
- fixed an issue where not all Auxes were available for bus copies on Graphite.
- fixed an issue where the state of Auxes was not synced properly on startup.
- improved stability of the system when devices were incorrectly configured with an IP of 0.0.0.0.

CAPRICA 5.2C – JANUARY 2019

SWITCHER SUPPORT

- Caprica now adds support of Grass Valley K-Frame software version 14 and maintains compatibility of previous versions starting with v8.
- Caprica now adds support of Grass Valley K-Frame Multi-Suite feature.

BUGS ADDRESSED

- Excessive logging when using certain Custom Controls has been corrected.
- Some port commands triggered via Custom Control were no longer working.
- In order to mitigate cases where clips that still transferring on Harmonic Spectrum (Omneon) video server do not play to completion, if an attempt to cue a clip is performed while the file is being transferred, the cue will now fail. This allows OverDrive the opportunity to recue the clip when the file transfer is complete and prevent invoking the current limitation with the video server.
- RAVE with Graphite 2.0 and greater is now supported.

CAPRICA 5.2B – JANUARY 2019

BUG ADDRESSED

- A timeout mechanism has been added to end of transitions.

CAPRICA 5.2A – JANUARY 2019

SWITCHER SUPPORT

- Ross Carbonite Ultra switcher now supported.

ENHANCEMENTS

- The Input Configuration menu supports adding an alias with the option of updating OverDrive with this additional name.
- Device ports can now be disabled / enabled with a Custom Control. The status of ports is displayed on the Port Configuration page.

BUGS ADDRESSED

- Transitions no longer time out before completion when using a Graphite switcher.
- Updates to K-Frame software were not compatible with Caprica, this has been rectified.
- Audio transitions were not working, they have been fixed.
- Caprica now logs where a Custom Control is initiated from.
- The About page now displays the license information for CentOS.
- The Custom Control function “Force On and Force Off” are now working properly.
- Source and Destination have been added to the Custom Control parameters for Key State Copy.
- Faders no longer turn Mute On when brought to zero.
- Custom Control recording Key 4 bus will now copy Aux Buses 21 through 28.
- Custom Control recording will now copy Aux Buses 8 and above on Carbonite Black.

- Multiple video server channels would at times not be triggered in a transition, this has been fixed.

CAPRICA 5.1A – NOVEMBER 2018

ENHANCEMENTS

- RossTalk can now address the backside / alpha or second channel of Keyers. The format of the KEYBUS Xpt command is: XPT ME:<me>:KEY<key>:KEYBUS:<keybus>:<src_Id>. RossTalk KEYBUS Xpt commands created prior to this change will.
- The TASCAM CD-400U is now supported.

BUGS ADDRESSED

- The “Kula Macro” has been renamed “SamSw Macro” as it can be used for other SAM switchers in addition to the Kula.
- Changes made to faders on SideSlide are now reflected in Direct Control.

COCKPIT 1.2.0

ENHANCEMENT

- Disksets now enable saving and loading the following individual components: Installation, Custom Controls, and ShotBox.

CAPRICA 4.3J – NOVEMBER 2018

BUGS ADDRESSED

- The Quartz Evertz router is now available in the Custom Control menu (Bug 62806).
- Position timecode for the Nexio Video server has been improved (Bug 62222).
- Incorrect sources were being reported on air in some cases when controlling a Graphite or Carbonite switcher (Bug 62974).

CAPRICA 4.3I – OCTOBER 2018**ENHANCEMENT**

- Custom Control “StopForGroup” has been added.

CAPRICA 4.3H – HOT FIX: 27 SEPTEMBER 2018**BUG ADDRESSED**

- Mnemonics on SideBox were lost after upgrade to 4.3g.

CAPRICA 4.3G – HOT FIX: 6 SEPTEMBER 2018**BUG ADDRESSED**

- Control of the Jupiter Router has been improved.

CAPRICA 4.3E – AUGUST 2018**ENHANCEMENTS**

- Evertz Quartz Routers are now available as a supported device.
- Copying to Auxes is now supported for Snell Advanced Media (SAM) Switchers.

CAPRICA 4.3D – HOT FIX: 30 JULY 2018**BUGS ADDRESSED**

- Documentation updates.
- Timecode reported for Omneon servers has been improved.

CAPRICA 4.3C – HOT FIX: 10 JULY 2018**ENHANCEMENTS**

- Caprica can now control 64 cameras simultaneously.
- Caprica can now control 240 video server channels.

BUGS ADDRESSED

- Keys were transitioning off as a cut when an auto transition had been selected.
- Looping of video on the Omneon Video Server can be successfully controlled from Caprica.
- Changes to LAWO Sapphire faders in Direct Control and Side Slide are now reflected on the switcher.

CAPRICA 4.3B – HOT FIX: 19 JUNE 2018**ENHANCEMENTS**

- OverDrive will now display the number of Custom Controls that can be run simultaneously.
- OverDrive will now report on the state of Custom Controls.

BUGS ADDRESSED

- Renaming Custom Control banks no longer causes Rundown Control to disconnect and generate an error.
- Improvements have been made in the control of the Orad Maestro CG.

CAPRICA 4.3A – JUNE 2018**ENHANCEMENTS**

- ChyronHego Prime Graphics now supported.
- LAWO Sapphire Audio Mixer now supported using the RAS (Radio Automation System) protocol.
- Events in custom controls can now be reordered.
- Character Generators IDs can now be input to “Take Offline”.
- Twenty-Eight custom controls can now be run simultaneously, increased from ten.
- RossTalk “TypeInCmd” may now be entered in HEX as well as ASCII.

- Orad Maestro driver has been improved.

BUGS ADDRESSED

- Mute off now works for any fader that has Analog 3 as the source on the RAVE Audio Mixer.
- Renaming of a custom controls bank no longer results in a disconnection from the switcher.
- Caprica now provides OverDrive with the number and names of the device ports Bug.
- Licensing has been made more robust.

CAPRICA 4.2C – MAY 2018**BUG ADDRESSED**

- AMP device information displays correctly after upgrading Caprica to version 4.2c.

CAPRICA 4.2B – MAY 2018**BUG ADDRESSED**

- Eliminated the chance of the Cue Clip custom controls cuing the wrong clip.

CAPRICA 4.2A – MAY 2018**SWITCHER SUPPORT**

- Grass Valley Kula switcher now supported.

ENHANCEMENT

- Pause minus Preroll for custom controls.

BUGS ADDRESSED

- Memory recalls now update crosspoint names in Direct Control.
- Calrec Audio Faders would occasionally go to the wrong fader value.

- Fader values in Direct Control are now updating when the all channels off command is issued.

CAPRICA 4.1A – FEBRUARY 2018

SWITCHER SUPPORT

- Ross Video Graphite switcher now supported.

ENHANCEMENTS

- Ross RAVE 1 RU Audio Breakout Module now supported by Caprica.
- Harmonic Omneon Spectrum Playout Server now supported by Caprica.
- RossTalk custom controls “TypeInCmd w/o CRLF” added to Caprica.
- RossTalkXPN “Rest”, “Get”, and “Post” commands added to Caprica.
- New special custom controls “HoldForRun”, “RunHeld”, “HoldForRun(group)”, “RunGroup”, and “Notify EOC” added to Caprica.

BUGS ADDRESSED

- Upgrading to Caprica 4.1a requires license reactivation.
- License logging is now more robust.
- Video server control through the VDCP protocol made more robust when handling duplicate names, looping, and error logging.
- DAKtronics Venus 7000 and Dalet Brio devices now supported.
- SONY camera renamed to VISCA now that SONY and Pivot cams use the VISCA protocol.
- Additional audio when used with Audio Follow Video off in a shot now correctly represents the additional audio fader in OverDrive’s Direct Control.
- Caprica now supports 240 inputs. The first 36 inputs are physical, while the remaining inputs are virtual.
- Cockpit replaces the Caprica webpage on port 8080.
- Custom controls and RossTalk commands have new icons.

- New logging system stores logs in /var/log/journal/, and logs are no longer lost due to rate limiting.
- The Caprica switcher driver now reports its name correctly in OverDrive.
- Recalling a diskset now removes the custom controls file before unpacking the new custom control file.
- Termite drivers included in Caprica upgrades are now the latest released versions.
- Caprica only updates OverDrive with new router names after the router stops sending names rather than on each name change.
- Caprica clusters logs now contain more information.

CAPRICA 3.5P – HOT FIX: 2 APRIL 2018

BUG ADDRESSED

- Communication with the Calrec audio mixer has been improved.

CAPRICA 3.5O – HOT FIX: 28 MARCH 2018

BUGS ADDRESSED

- Jourald Persistent Storage option is enabled by default.
- AMP recording is limited to 720 minutes, it was 720 seconds.

CAPRICA 3.5N – HOT FIX: 16 MARCH 2018

BUGS ADDRESSED

- Update to timing for sending Take command to VizRT Character Generator.
- In some cases, Mute was being turned off on the Wheatstone when it shouldn't have been.

CAPRICA 3.5M – HOT FIX: 27 FEBRUARY 2018

BUG ADDRESSED

- An extra variable for Video Servers using VDCP has been added call “Play Skip Q”. When the value is set to “Yes” the play command will be sent as soon as possible and skip the queue of commands.

CAPRICA 3.5L – HOT FIX: 20 FEBRUARY 2018

BUG ADDRESSED

- Faders being brought down to zero would on occasion turn mute off.

CAPRICA 3.5K – HOT FIX: 6 FEBRUARY 2018

BUGS ADDRESSED

- Robotics control invert settings now persist.
- CG macros may now be a maximum of 200 characters long.

CAPRICA 3.5J – FEBRUARY 2018

BUG ADDRESSED

- Reset Device custom control now closes and re-opens socket, it also prevents stale data from being sent when the connection is re-established.

CAPRICA 3.5I – HOT FIX: 26 JANUARY 2018

BUG ADDRESSED

- Devices using RossTalk HTTP messages were not always being sent a complete message, this has been corrected.

CAPRICA 3.5H – HOT FIX: 21 DECEMBER 2017

ENHANCEMENT

- Caprica internal switcher driver has increased the number of inputs it supports from 32 to 64.

CAPRICA 3.5G – HOT FIX: 19 DECEMBER 2017

BUGS ADDRESSED

- Device Input pre-roll values were not being saved, that has been corrected.
- More robust message handling from the Kayenne switcher when messages are out of order or unexpected.

CAPRICA 3.5F – HOT FIX: 12 DECEMBER 2017**BUGS ADDRESSED**

- Licensing in the clustered environment has been made more robust.
- RossTalk command XPT using input source name now works with Carbonite and SONY.

CAPRICA 3.5E – HOT FIX: 6 DECEMBER 2017**BUGS ADDRESSED**

- RossTalk IN has been made more robust when handling Invalid XPT queries.
- A delay has been added when updating Wheatstone values in OverDrive Direct Control to ensure they more accurately reflect the value on the audio mixer.
- Carbonite and Carbonite Black have an adjustable value to control the number of fields to wait before changing after a memory recall. Carbonite Black now has an adjustable value for the number of inputs.

CAPRICA 3.5D – HOT FIX: 29 NOVEMBER 2017**BUGS ADDRESSED**

- RossTalk IN has been made more robust when handling Invalid XPT queries.
- Reporting events for ME Utils1 bus to OverDrive no longer generates an exception in OverDrive.

CAPRICA 3.5C – HOT FIX: 6 NOVEMBER 2017**ENHANCEMENTS**

- RossTalk command to query XPT has been added.
- RossTalkXPN command http POST has been added.

BUG ADDRESSED

- RossTalk XPT invalid keyer values are now rejected.

CAPRICA 3.5B – OCTOBER 2017**ENHANCEMENT**

- Caprica additional RossTalk command to set XPT.

BUG ADDRESSED

- Switching between installation files could cause the loss of some device control.

CAPRICA 3.5A – SEPTEMBER 2017**ENHANCEMENTS**

- Caprica device input support increased from 120 to 240.
- A custom control can now be used to switch between VizRT Character Generator MSE profiles.
- Support for more Aux Buses.

BUG ADDRESSED

- OverDrive is notified of Audio Follow Video mode changes. This requires OverDrive 16.4 or higher.

CAPRICA 3.4A – SEPTEMBER 2017**ENHANCEMENTS**

- Caprica now supports the Nexio Video Server.
- A new custom control event “Sony Macro Take” has been added.
- A custom control can now set the transition type.
- A custom control can now copy the on-air state of keys.

- Users can now select “On-Air Relative” and “Preview Relative” when choosing an ME for a custom control.
- The active ID for a clip does not contain an identifier we will now use the last active ID that was sent as part of cueing the clip.
- Special characters used by Jupiter Routers caused communication issues when used with a Control RFC 2217.

CAPRICA 3.3D – AUGUST 2017

BUG ADDRESSED

- Character Generator custom control Take Offline now works.

CAPRICA 3.3C – JULY 2017

BUG ADDRESSED

- On occasion, the Licensing Server would return no license keys, this has been fixed.

CAPRICA 3.3B – JUNE 2017

ENHANCEMENT

- There are now 64 panel network ports available for device control.

BUGS ADDRESSED

- Character Generator custom control Take Offline now works.
- Character Generator Cue and Play commands are being queued.
- Licensing status last contacted date was not always updating as it should have. This has been corrected.
- Logs for the License Server have been improved.
- The number of video server channels reported has been increased to 127.

CAPRICA 3.3 - MAY 2017

ENHANCEMENT

- Several new custom controls were added to support all character generators.
 - Clear — Clear all graphics from the specified layer, or all layers on the program channel. Press Layer to select either a specific layer (On), or all layers (Off). Use the Layer knob to enter a specific layer.
 - Resume — Resume playing an animation that was paused. Press Layer On and use the Layer knob to enter a new layer.
 - Take Offline — Take the current effect off-air with a transition.
 - Take Out — This custom control command has been replaced with Clear.
 - Take — Play the next effect that is cued up on the Character Generator. The next effect will be on the preview (PV) of the Character Generator and will be taken to the program (PGM) of the Character Generator with this event.

Note

If you have Take Out custom control events for your Vizrt® character generator, you must re-record them using the Take Offline event. All other character generators using the Take Out control event will work as expected.

CAPRICA 3.2D - APRIL 2017**BUGS ADDRESSED**

- Media wipes run on Carbonite would disable audio channels. This has been fixed.
- Shotoku Camera connection to Caprica has been made more robust.
- Large custom controls (500+ characters) can now be sent from the frame to the panel.
- RossTalk commands can now contain a maximum of 96 characters.
- Custom control parameters are truncated at 40 characters.

CAPRICA 3.2 - FEBRUARY 2017

ENHANCEMENT

- Caprica web page has been enhanced to configure and manage the clustering capability, load and save the disk sets, and deploy packages.

CAPRICA 3.1 - NOVEMBER 2016**BUG ADDRESSED**

- Additional check to ensure that current version Caprica is compatible with OverDrive release

CAPRICA 3.0A - AUGUST 2016**SIDESTICK**

- Sidestick is a new joystick device to facilitate the control of robotic cameras and DVEs.

SUPPORT FOR EMBER PROTOCOL

- The Studer Ember protocol has been integrated into the Caprica environment.

LICENSING

- A core group of Caprica capabilities is available to customers who have purchased the Express licensing plan. The set of functionality provided under Express may vary depending on the site and additional features that may have been purchased.
- Restored earlier support for external still stores.

CAPRICA 2.1K - AUGUST 2016**BUGS ADDRESSED**

- Corrected invalid clip duration and impact on timers after clips were queued by Caprica.
- Corrected lag issue when performing transitions with Carbonite Black switcher.

- Corrected issue with VizRT resume command.

CAPRICA 2.1C – APRIL 2016

BUG ADDRESSED

- Better management of router source names when not present.

CAPRICA 2.1 – MARCH 2016

ENHANCEMENT

- A new web-enabled interface is available to allow operators to more easily manage their Caprica installation. The new interface displays the current status of the Caprica installation and allows the operator to start and stop the service. It also offers the ability to access the log files.

CAPRICA 2.0 – FEBRUARY 2016

ENHANCEMENTS

- Additional Custom Control Management Commands in DashBoard – When an operator inserts or appends the event to a custom control in DashBoard, the system will apply the change and execute the custom control immediately. However, there are cases where the operator may want to apply a change but not execute the custom control immediately. Therefore, 2 new buttons have been added to the user interface allowing the operator to only insert or append a change without executing the custom control.
- Device Swap Capability – A new capability has been added to the DashBoard application to swap the ports for connecting to a switcher. The user interface allows the operator to define the primary and alternate network ports for connecting to a switcher, and to perform the swapping between the defined ports.

The ability to define custom control to select the configuration and initiate the device swapping is also available, and all configurations are retained by the system following a reboot.

- Caprica Server Redundancy – The Caprica Redundancy feature provides greater reliability to customers by supporting the ability to configure and manage a primary and redundant Caprica server.

The capability will automatically manage the configuration settings for both Caprica servers by keeping their data synchronized and automatically seamlessly swapping operations between the servers when required.

CAPRICA 1.4 – JANUARY 2016

ENHANCEMENT

- Support for SpotOn – The SpotOn real-time audio playback supports stereo and surround files and can allow for up to 320 audio clips loaded for instant playback.

CAPRICA 1.4 – AUGUST 2015

SWITCHER SUPPORT

- Support added for the Ross Video Carbonite Black switcher.

ENHANCEMENTS

- Enhanced macro definition for Sony 8000g switcher – Previously, Caprica allowed for 20 macros to be defined starting at position 200. In the new release, the number of macros has been increased to 32 and the start position is configurable. The default start position is set to 200.
- RossTalk in Caprica – Support for RossTalk in Caprica has been extended to support the full set of custom control commands.
- Router resource management UI – Dashboard interface is available for Caprica to define the inclusion and exclusion set of sources and destinations for routers.

KNOWN ISSUES

OVERDRIVE

GENERAL ISSUES AND NOTES

- OverDrive no longer supports Postgres database older than version 10.3. Please refer to the install guide on further details.
- Caprica Cluster rebuild is required if upgrading from a release prior to 4.2, to a release post 4.2.
- OverDrive no longer supports operating systems older than Microsoft® Windows® 7 and Microsoft® Windows Server 2012 64 bit.
- Microsoft Internet Explorer no longer supports SHA-1 certificates and mandates the use of SHA-256 certificates. However, OverDrive is required to continue support older versions of Windows operating systems (older than Windows 7), the application will continue to be signed with SHA-1 certificates. [bug OD-8908]

Due to these circumstances, if a user was to download the client or NRCS plugin installer from the server they would receive an error message when the download has completed stating: "the signature of OverDriveClients.msi is corrupt or invalid".

To avoid the issue, the user must save the file to their workstation and then execute it from their local environment.

- All OverDrive client machines require Internet Explorer version 9 or greater to be installed.
- System Standby and Hibernate should be disabled on all computers running OverDrive. If enabled, the systems may not recover cleanly from either state. Refer to the Installation and Configuration Guide, Chapter 8 - User Settings.
- PCs used to run OverDrive clients require a minimum of 8 GB of RAM installed to run this version.
- PCs used to run the OverDrive server, but no clients, require a minimum of 8 GB of RAM installed to run this version.

- PCs used to run the OverDrive server and Caprica VM, but no clients, require a minimum of 16 GB of RAM installed to run this version.
- As of OverDrive 15.4 the SideCar capability is no longer supported and therefore has been removed from the OverDrive suite of tools.
- Since the release of version 15.4, the Postgres database has been upgraded to version 9.3.5. A separate Postgres user account (called 'OD_USER') has been added to manage all the OverDrive database transactions. The introduction of a new user account provides clients with the ability to delineate separate database accounts for administrative purposes and OverDrive operations. Authorization to the administrative account is only required during the installation process. The password for the administrative account is not managed or stored by OverDrive.

OVERDRIVE NEWSROOM SUPPORT

- Internet Explorer version 8 is no longer supported with the OverDrive ActiveX plugin.
- ENPS 7 User Interface change has moved the MOS Story Send option to the Production Tab of the application from the Edit Properties window where it was in ENPS 6.
- When using the OverDrive ActiveX plugin with an ENPS 'Chinese Client', the 'internal store' number can NOT be entered using Full Shape Chinese Characters. An 'Invalid Data' error will be given even when a valid number is entered. The workaround for this is to use a traditional Chinese input method with half shape characters to input the desired internal store number. Alternatively, English ASCII numbers can be used [Bug OD-4414].

Similarly, templates requiring an 'Aux Bus Device number' to be entered, will also NOT accept Chinese numbers. A pop-up will appear asking the user to check their entry is between 1 and 48 and that they must have a cross-point selected. Again, the reason behind this is the rejection of the Chinese Characters. [Bug OD-4413]

- If a proxy is configured in Internet Explorer, the newsroom plugins will use the same settings. To be able to use OverDrive and newsrooms with proxies, both machines must be visible on the network from the proxy.

- ActiveX support must be enabled within Internet Explorer for all users to use the newsroom plugins.
- If after installing a new version of the ActiveX plugin, drag & drop stops working, perform the following steps to correct the issue:
 1. Using Add/Remove programs, remove all Ross ActiveX plugins,
 2. Restart the machine.
 3. Reinstall the desired ActiveX plugin.
- The cache in Internet Explorer must be disabled (go to 'Internet Options').

OVERDRIVE SERVER

- The time, time zone and language settings must be the same on the primary and redundant servers.
- For device and transitions received from the NRCS Gateway, the server may be configured to associate these objects using their unique identifier (default) or the associated name. Before changing the parameter to use the 'name' option, it is recommended that all the MOS objects be re-saved in order to ensure that the MOS format has been properly re-formatted to contain all the necessary information.
- An OverDrive Redundant Server System enables the operator to transfer control between a primary and secondary system. The operation could take a few minutes under certain conditions to fully complete the transfer between both systems. Once completed, the RundownControl, Template Editor and DirectControl clients on the secondary system will respond normally and the operator may continue operations.
- The display of Unicode/Chinese text in various browsers can sometimes be corrupted if an older version of Java is installed. Please upgrade to the latest version of Java to correct this issue.
- It is possible for Windows to internally disable the Ethernet adaptors used to connect to the network and clients. To prevent this, open the Device Manager for each network adapter and select Properties -> Power

Management. Ensure that the checkbox for "Allow the computer to turn off this device to save power" option is unchecked. Refer to your OverDrive Installation and Configuration Guide, Chapter 8 - User Settings.

- Settings logs to levels more detailed than "info" can result in a slow network and switcher connection. It is recommended that unless instructed by Ross Video technical support, all log levels be set to "info".

OVERDRIVE CLIENT APPLICATIONS

RUNDOWNCONTROL

- The Standard (4x3) perspective was removed from RundownControl.
- DSK gets cued in advance when playing a rundown. This functionality will be corrected in a future release because OverDrive should not be able to control this key giving our users the confidence that pre-programed keys are always available when required [Bug OD-6999]
- When saving a newsroom rundown as a local/live rundown, any MOS CG timing will be ignored. [Bug OD-5857]
- It should be noted that the Server Sync Roll feature is not frame accurate, and there can be a difference in the number of frames between the clips rolling on the primary and redundant cross-points [Bug OD-4304]
- If a MOS Video Server object is added to a story and saved by itself, an OverDrive shot will be added to the rundown table but will have a caution flag beside it. This is because a 'default' OverDrive template must be identified by Rundown Control. However, if this default template is then added to the story the caution flag should be removed however it will remain. If the rundown is reloaded the caution flag will be gone if the story is coded with an OverDrive shot.
- When using the Server Sync Roll feature and executing the SWAP command due to a primary device failure, the On-Air-Status reported by the Rundown Client GUI will remain as "Shot Failed" – despite the fact that the redundant server shot is actually OK. If the shot is manually re-prepared the failure status will be removed. Whilst this does NOT affect the functional operation

of this feature, the GUI does not update automatically and could be somewhat confusing [Bug OD-4422]

- It may be possible to enter Aux bus numbers that do not exist on the attached switcher, templates with invalid Aux buses assigned may not prepare.
- Hotkeys are no longer displayed on buttons. Instead, open the Options dialog in the Window menu to look at hotkey assignments.
- It is possible for a 'Redundant Client' to initiate a Hot Swap from Primary to Secondary Server even when the 'Primary client' is still in control and possibly playing a rundown. This is permitted for primary client/primary server failure cases, but it should be noted that the primary client will not swap to the newly active Secondary Server and can no longer play the rundown. The Redundant client needs to become the active client and take over the playing of the rundown.

TEMPLATE EDITOR

- When upgrading from an OverDrive version prior to 15.6, it is important to remember that the server will not retrieve any clip lists or similar data from routers, video servers and still store devices unless they are associated with a device group.
- When using a multiple crosspoint device (e.g., video server), if two or more device templates are created that have crosspoints in common, then those device templates should NOT be set to Back-To-Back. Failure to do so can result in incorrect clips being played when the shot is taken.
- Due to load times associated with internal stills, it is recommended that the "Back-to-back" option not be selected for the Internal Still device type.

DIRECT CONTROL

- When using a multiple crosspoint device (e.g., video server), if two or more device templates are created that have crosspoints in common, then those device templates should NOT be set to Back-To-Back. Failure to do so can result in incorrect clips being played when the shot is taken.

RAPIDRESTORE

- The Dual Switcher Redundancy setting is not restored from a backup file. The value is always set to false. For clients requiring this capability, they will need to re-select the check box in the web page interface after restoring an older backup file.
- Hotkeys are not restored from backup files created in all versions of OverDrive before 9.0.1; hotkeys will be restored from backup files made in OverDrive 9.0.1 or greater.
- During Rapid Restore operations the user may be informed that the OverDrive client applications must be stopped before proceeding. The user is required to close all these applications before proceeding with the RapidRestore.

NRCS GATEWAY

- The OverDrive Gateway is installed as a Windows Service on the primary and redundant servers. The services are automatically started when the servers are rebooted. The OverDrive Gateway establishes communications with both the OverDrive Server and the NRCS and must be left running to open rundowns in RundownControl.

VISION MD/MD-X SWITCHER SUPPORT

- Vision software version 17.0a, or greater, is recommended to inter-operate with this version of OverDrive.
- MLE order (PGM must be the highest numbered ME) must be set correctly for OverDrive to operate correctly.
- The correct panel size must be set in Personality->Bus Maps->Select Panel Types, when the panel is smaller than the frame.
- Panel maps must be set the same on every ME or undesired operation will result, OverDrive uses crosspoint button numbers to access system resources.
- Your switcher must have the "Recall Global-Store" (or "Recall ME-Store") Personality option set to "Never" to enable OverDrive to load images into

Still-Store channels. Refer to your Vision or Synergy Engineering manual for information on setting Personality options on your switcher.

VISION QMD/QMD-X SWITCHER SUPPORT

- Vision software version 18.1u, or greater, is recommended to operate with this version of OverDrive.
- MLE order (PGM must be the highest numbered MLE) must be set correctly for OverDrive to operate correctly.
- QMD-X frames with 8 MLEs installed ARE fully supported.
- The correct panel size must be set in Personality->Bus Maps->Select Panel Types, when the panel is smaller than the frame.
- Panel maps must be set the same on every MLE or undesired operation will result, OverDrive uses crosspoint button numbers to access system resources.
- Your switcher must have the "Recall Global-Store" (or "Recall ME-Store") Personality option set to "Never" to enable OverDrive to load images into Still-Store channels. Refer to your Vision or Synergy Engineering manual for information on setting Personality options on your switcher.
- When configuring CG templates as secondary events, a CustomControl must be defined to ensure graphics will play out. The native TakeOffline functionality is not supported.

ACUITY SWITCHER SUPPORT

- Acuity software version 7.1a, or greater, is recommended to inter-operate with this version of OverDrive.
- Bus maps must not contain the same crosspoint twice or else OverDrive will disconnect from Acuity to prevent device control errors.

CAPRICA

GENERAL ISSUES AND NOTES

- Do not use " (quote character) in disk set names.
- From Caprica 2.1 the Wheatstone audio driver has been moved from peripheral port to remote port.

GETTING HELP

The OverDrive Online Help system can be accessed from any component of OverDrive by selecting Help > Contents. Online Help opens in a web browser window.

CONTACTING TECHNICAL SUPPORT

Technical Support is staffed by a team of experienced specialists ready to assist you with any question or technical issue.

NORTH AMERICA

Our North America center located in Ottawa, Ontario, Canada and is open Monday to Friday 8:30 a.m. to 6:00 p.m. EST, with 24/7/365 on-call service after hours.

Our telephone number is: +1-613-652-4886

Toll free within North America: +1 844-652-0645

EMEA

Our EMEA center is located in Buckinghamshire, England, United Kingdom and is open Monday to Friday 8:30 a.m. to 5:00 p.m. GMT. After hours support is provided by our North America location.

Our telephone number is: +44 (0)1189502446

International toll free: +800 1005 0100

EMERGENCY AFTER-HOURS SUPPORT

Our telephone number is: +1-613-349-0006

Toll free within North America: +1 844-652-0645

International toll free: +800 1005 0100

ONLINE

E-mail: techsupport@rossvideo.com

Website: use the link <http://www.rossvideo.com/support/tech-support.html> to open a support request.

COPYRIGHT

© 2021 Ross Video Limited. Ross® and any related marks are trademarks or registered trademarks of Ross Video Limited. All other trademarks are the property of their respective companies. PATENTS ISSUED and PENDING. All rights reserved. No part of this publication may be reproduced, stored in a retrieval system, or transmitted in any form or by any means, mechanical, photocopying, recording or otherwise, without the prior written permission of Ross Video. While every precaution has been taken in the preparation of this document, Ross Video assumes no responsibility for errors or omissions. Neither is any liability assumed for damages resulting from the use of the information contained herein.